



Garg



MORTICE LOCKS & LATCHES

Visit us at : www.garglocks.com



PUSH BUTTON LOCK



TECHNICAL DATA

ITEM CODE	SIZE	CASE SIZE	PCS. IN INNER	PCS. IN OUTER
LAL5315	4"	108x43	1	10

FEATURES:-

- Ideal for low frequency doors cabinet & cupboards.
- Small case size 108x48mm
- Single uses code to between 4 & 8 digit
- Hold back function
- Universal handling for left & right handed doors
- supplied with 60mm backset latch
- Non Sequential Codes

Finish Available : SCP, SNP, EB

PUSH BUTTON LOCK



TECHNICAL DATA

ITEM CODE	SIZE	CASE SIZE	PCS. IN INNER	PCS. IN OUTER
LAL5316	6"	142x41	1	10

FEATURES:-

- Light duty Code Lock - suitable for low, traffic office & Stores.
- For 33-55 mm thick doors.
- Supplied with 60mm back set dead locking & latch
- Includes hold back function.
- Easy Reversible
- Over 8000 code options
- Non Sequential Codes

Finish Available : SCP, SNP, EB

* Note : All Dimension in mm.



PUSH BUTTON LOCK



TECHNICAL DATA

ITEM CODE	SIZE	CASE SIZE	PCS. IN INNER	PCS. IN OUTER
LAL5317	8"	177x48	1	10

FEATURES:-

- Heavy Duty Suitable for main door & high traffic area
- Use on internal & external doors
- Suitable for 35 to 60mm thick doors
- Reversible for Left & Right handed operations
- Easy Code Change

Finish Available : SCP, SNP, EB

PUSH BUTTON LOCK EASY CHANGE



TECHNICAL DATA

ITEM CODE	SIZE	CASE SIZE	PCS. IN INNER	PCS. IN OUTER
LAL5318	6"	142x44	1	10

FEATURES:-

- Light duty code lock - Suitable for light traffic doors
- Suitable for 35-55mm thick doors
- Supplied with 60mm thick latch
- Easy Change Code without dismantling the lock after turning key from inside
- Over 8000 codes options
- Non sequential codes

Finish Available : SCP, SNP, EB

* Note : All Dimension in mm.



MULTI POINT LOCKS



TECHNICAL DATA

ITEM
CODE
LLMPL0001

FEATURES:-

- Auto locking mechanism
- Universal anti-push back hooks.
- SS Face plate offering
- High corrosion resistance.
- Backset available 35mm, 45mm, 55mm
- Gearbox tested to 100,000 cycles

Finish Available : SATIN, POLISHED, SNP



MULTI POINT LOCKS



TECHNICAL DATA

ITEM
CODE
LLMPL0002

FEATURES:-

- Split spindle follower
- Universal anti-push back hooks.
- High corrosion resistance.
- Backset available 28mm, 35mm, 45mm, 55mm
- Gearbox tested to 100,000 cycles

Finish Available : SATIN, POLISHED, SNP



MULTI POINT LOCKS



TECHNICAL DATA

ITEM
CODE
LLMPL0003

FEATURES:-

- Easy fixing mechanism
- Fits most Multipoint Locks
- High corrosion resistance.
- Adjustable front height

Finish Available : SATIN, POLISHED, SNP

HEAVY ESCAPE LOCK BODY



** CE & CERTIFIRE CERTIFICATION AWAITED

TECHNICAL DATA

ITEM CODE	SIZE	BACKSET	CASE SIZE	PCS. IN INNER	PCS. IN OUTER	PCS. IN PALLET
LAL4085	60X72	60	90X165	1	10	1080
EN 12209:2003	3 S 8 1 0 G 3 B A 2 0					
EN 179:2008	3 7 6 B 1 3 4 2 A B/D					

FEATURES:-

- Easily reversible mechanism by turning live bolt suitable for inside / outward & screwing main face plate.
- Follower is suitable for 8mm square spindle.
- Strike Plate & Face Plate Stainless Steel.
- Brass Live Bolt, Brass Dead Bolt, Brass Follower.
- Available with bolt through provision for 36 to 38 mm bolt through centre.
- Live Bolt Tested for 100,000 Cycles & Dead Bolt for 50,000 Cycles.
- Operation: Deadbolt operated by Euro Cylinders.

Finish Available : **SATIN, POLISHED**

Also Available in Radius Corner (LAL4086)

ESCAPE LOCK BODY



* Note : All Dimension in mm.

TECHNICAL DATA

ITEM CODE	SIZE	BACKSET	CASE SIZE	PCS. IN INNER	PCS. IN OUTER	PCS. IN PALLET
LAL4083	60X72	60	90X165	1	10	1080
EN 12209:2003	3 S 8 1 0 G 3 B A 2 0					
EN 179:2008	3 7 6 B 1 3 4 2 A B/D					

FEATURES:-

- Easily reversible mechanism by turning live bolt suitable for inside / outward & screwing main face plate.
- Follower is suitable for 8mm square spindle.
- Strike Plate & Face Plate Stainless Steel.
- Brass Live Bolt, Brass Dead Bolt, Brass Follower.
- Available with bolt through provision for 36 to 38 mm bolt through centre.
- Live Bolt Tested for 100,000 Cycles & Dead Bolt for 50,000 Cycles.
- Operation: Deadbolt operated by Euro Cylinders.

Finish Available : **SATIN, POLISHED**

Also Available in Radius Corner (LAL4084)



LEVER HANDLES COMPATIBLE WITH ESCAPE LOCK BODY (TESTED WITH SAME AS PER EN 179 : 2008)



EH4083

FEATURES:-

- Pair of lever handles on plates
- To suit doors up to 44mm thick.
- 8mm split spindle included for lever operation
- Material SS Grade 304

Finish Available : SATIN, POLISHED

LEVER HANDLES COMPATIBLE WITH ESCAPE LOCK BODY (TESTED WITH SAME AS PER EN 179 : 2008)



EH4084

FEATURES:-

- Pair of lever handles on plates
- To suit doors up to 44mm thick.
- 8mm split spindle included for lever operation
- Material SS Grade 304

Finish Available : SATIN, POLISHED



CE EURO PROFILE LOCK BODY SINGLE THROW (72MM CENTRE)



TECHNICAL DATA

ITEM CODE	SIZE	BACKSET	CASE SIZE	PCS. IN INNER	PCS. IN OUTER	PCS. IN PALLET
LAL1630	55X72	55	83X165	1	10	1080
LAL1631	60X72	60	88X165	1	10	1080

BSEN : 12209:2003 **3 X 8 1 0 G 3 B A 2 0**

FEATURES:-

- Easily reversible mechanism by turning live bolt as suitable for inward / outward opening door & screwing main face plate.
- Follower is suitable for 8mm square spindle.
- Strike Plate & Face Plate Stainless Steel.
- Brass Live Bolt, Brass Dead Bolt, Zinc Follower.
- Available with bolt through provision for 38 mm bolt through centre.
- Live Bolt Tested for 200,000 Cycles & Dead Bolt for 50,000 Cycles.
- Operation: Deadbolt operated by Euro Profile Cylinders.
- Available as latch only and dead lock only variants.
- Compatible with LAA1235, LAA1240, LAA1245 Rebate Set.

Finish Available : **SATIN, POLISHED**

Also Available in Radius Corner (LAL1632,LAL1633)

CE EURO PROFILE LOCK BODY SINGLE THROW (72MM CENTRE)



TECHNICAL DATA

ITEM CODE	SIZE	BACKSET	CASE SIZE	PCS. IN INNER	PCS. IN OUTER	PCS. IN PALLET
LAL1699	55X72	55	83X165	1	10	1080
LAL1700	60X72	60	88X165	1	10	1080

BSEN : 12209:2003 **3 X 8 1 0 G 3 B A 2 0**

FEATURES:-

- Easily reversible mechanism by turning live bolt as suitable for inward / outward opening door & screwing main face plate.
- Follower is suitable for 8mm square spindle.
- Strike Plate & Face Plate Stainless Steel.
- Zinc Live Bolt, Zinc Dead Bolt, Zinc Follower.
- Available with bolt through provision for 38 mm bolt through centre.
- Live Bolt Tested for 200,000 Cycles & Dead Bolt for 50,000 Cycles.
- Operation: Deadbolt operated by Euro Profile Cylinders.
- Available as latch only and dead lock only variants.
- Compatible with LAA1235, LAA1240, LAA1245 Rebate Set.

Finish Available : **SATIN, POLISHED**

Also Available in Radius Corner (LAL1701,LAL1702)

* Note : All Dimensions are in mm.



CE EURO PROFILE LOCK BODY DOUBLE THROW (72MM CENTRE)



12209:2003



1634-1



CF 5531



CE 2812



FIRE TESTED
FD-20/30/60/90/120
MINUTES



TECHNICAL DATA

ITEM CODE	SIZE	BACKSET	CASE SIZE	PCS. IN INNER	PCS. IN OUTER	PCS. IN PALLET
LAL1679	50X72	50	78X165	1	10	1080
LAL1661	55X72	55	83X165	1	10	1080
LAL1662	60X72	60	88X165	1	10	1080

BSEN : 12209:2003 **3 X 8 1 0 G 3 B C 2 0**

FEATURES:-

- Easily reversible mechanism by turning live bolt as suitable for inward / outward opening door & screwing main face plate.
- Follower is suitable for 8mm square spindle.
- Strike Plate & Face Plate Stainless Steel.
- Brass Live Bolt, Brass Dead Bolt, Zinc Follower.
- Available with bolt through provision for 38 mm bolt through centre.
- Live Bolt Tested for 200,000 Cycles & Dead Bolt for 50,000 Cycles.
- Operation: Deadbolt operated by Euro Profile Cylinders.
- Available as latch only and dead lock only variants.
- Compatible with LAA1235, LAA1240, LAA1245 Rebate Set.

Finish Available : **SATIN, POLISHED**

Also Available In Radius Corner (LAL1680,LAL1663,LAL1664)

CE EURO PROFILE LOCK BODY DOUBLE THROW (72MM CENTRE)



12209:2003



1634-1



CF 5531



CE 2812



FIRE TESTED
FD-20/30/60/90/120
MINUTES



TECHNICAL DATA

ITEM CODE	SIZE	BACKSET	CASE SIZE	PCS. IN INNER	PCS. IN OUTER	PCS. IN PALLET
LAL1687	50X72	50	78X165	1	10	1080
LAL1703	55X72	55	83X165	1	10	1080
LAL1704	60X72	60	88X165	1	10	1080

BSEN : 12209:2003 **3 X 8 1 0 G 3 B C 2 0**

FEATURES:-

- Easily reversible mechanism by turning live bolt as suitable for inward / outward opening door & screwing main face plate.
- Follower is suitable for 8mm square spindle.
- Strike Plate & Face Plate Stainless Steel.
- Zinc Live Bolt, Zinc Dead Bolt, Zinc Follower.
- Available with bolt through provision for 38 mm bolt through centre.
- Live Bolt Tested for 200,000 Cycles & Dead Bolt for 50,000 Cycles.
- Operation: Deadbolt operated by Euro Profile Cylinders.
- Available as latch only and dead lock only variants.
- Compatible with LAA1235, LAA1240, LAA1245 Rebate Set.

Finish Available : **SATIN, POLISHED**

Also Available In Radius Corner (LAL1688,LAL1705,LAL1706)

* Note : All Dimensions are in mm.



CE EURO PROFILE LATCH ONLY IN LOCK BODY (72MM CENTRE)



12209:2003



1634-1



CF 5531



CE 2812



FIRE TESTED
FD-20/30/60/90/120
MINUTES



TECHNICAL DATA

ITEM CODE	SIZE	BACKSET	CASE SIZE	PCS. IN INNER	PCS. IN OUTER	PCS. IN PALLET
LAL1683	50x72	50	78x165	1	10	1080
LAL1644	55x72	55	83x165	1	10	1080
LAL1645	60x72	60	88x165	1	10	1080

BSEN : 12209:2003 3 X 8 1 0 G - B 0 2 0

FEATURES:-

- Easily reversible mechanism by turning live bolt as suitable for inward / outward opening door & screwing main face plate.
- Follower is suitable for 8mm square spindle.
- Strike Plate & Face Plate Stainless Steel.
- Brass Live Bolt, Zinc Follower.
- Available with bolt through provision for 38 to 40 mm bolt through centre.
- Live Bolt Tested for 200,000 Cycles
- Compatible with LAA1235, LAA1240, LAA1245 Rebate Set .

Finish Available : SATIN, POLISHED

Also Available In Radius Corner (LAL1684,LAL1646,LAL1647)

CE EURO PROFILE LATCH ONLY IN LOCK BODY (72MM CENTRE)



12209:2003



1634-1



CF 5531



CE 2812



FIRE TESTED
FD-20/30/60/90/120
MINUTES



TECHNICAL DATA

ITEM CODE	SIZE	BACKSET	CASE SIZE	PCS. IN INNER	PCS. IN OUTER	PCS. IN PALLET
LAL1691	50x72	50	78X165	1	10	1080
LAL1715	55x72	55	83X165	1	10	1080
LAL1716	60x72	60	88X165	1	10	1080

BSEN : 12209:2003 3 X 8 1 0 G - B 0 2 0

FEATURES:-

- Easily reversible mechanism by turning live bolt as suitable for inward / outward opening door & screwing main face plate.
- Follower is suitable for 8mm square spindle.
- Strike Plate & Face Plate Stainless Steel.
- Zinc Live Bolt, Zinc Follower.
- Available with bolt through provision for 38 to 40 mm bolt through centre.
- Live Bolt Tested for 200,000 Cycles
- Compatible with LAA1235, LAA1240, LAA1245 Rebate Set .

Finish Available : SATIN, POLISHED

Also Available In Radius Corner (LAL1692,LAL1717,LAL1718)

* Note : All Dimensions are in mm.



CE EURO PROFILE DEAD BOLT ONLY IN LOCK BODY SINGLE THROW (72MM CENTRE)



12209:2003



1634-1



CF 5531



CE 2812



FIRE TESTED
FD-20/30/60/90/120
MINUTES



TECHNICAL DATA

ITEM CODE	SIZE	BACKSET	CASE SIZE	PCS. IN INNER	PCS. IN OUTER	PCS. IN PALLET
LAL1648	55X72	55	83X165	1	10	1080
LAL1649	60X72	60	88X165	1	10	1080

BSEN : 12209:2003 3 X 8 1 0 G 3 B A 0 0

FEATURES:-

- Strike Plate & Face Plate Stainless Steel.
- Brass Dead Bolt
- Available with bolt through provision for 38 to 40 mm bolt through centre.
- Dead Bolt tested for 50,000 Cycles.
- Compatible with LAA1235, LAA1240, LAA1245 Rebate Set.

Finish Available : SATIN, POLISHED

Also Available In Radius Corner (LAL1650,LAL1651)

CE EURO PROFILE DEAD BOLT ONLY IN LOCK BODY SINGLE THROW (72MM CENTRE)



12209:2003



1634-1



CF 5531



CE 2812



FIRE TESTED
FD-20/30/60/90/120
MINUTES



TECHNICAL DATA

ITEM CODE	SIZE	BACKSET	CASE SIZE	PCS. IN INNER	PCS. IN OUTER	PCS. IN PALLET
LAL1719	55X72	55	83X165	1	10	1080
LAL1720	60X72	60	88X165	1	10	1080

BSEN : 12209:2003 3 X 8 1 0 G 3 B A 0 0

FEATURES:-

- Strike Plate & Face Plate Stainless Steel.
- Zinc Dead Bolt
- Available with bolt through provision for 38 to 40 mm bolt through centre.
- Dead Bolt tested for 50,000 Cycles.
- Compatible with LAA1235, LAA1240, LAA1245 Rebate Set.

Finish Available : SATIN, POLISHED

Also Available In Radius Corner (LAL1721,LAL1722)

* Note : All Dimensions are in mm.

CE EURO PROFILE DEAD BOLT ONLY IN LOCK BODY DOUBLE THROW (72MM CENTRE)



12209:2003



1634-1



CF 5531



CE 2812



FIRE TESTED
FD-20/30/60/90/120
MINUTES



TECHNICAL DATA

ITEM CODE	SIZE	BACKSET	CASE SIZE	PCS. IN INNER	PCS. IN OUTER	PCS. IN PALLET
LAL1685	50X72	50	78X165	1	10	1080
LAL1675	55X72	55	83X165	1	10	1080
LAL1676	60X72	60	88X165	1	10	1080

BSEN : 12209:2003 3 X 8 1 0 G 3 B C 0 0

FEATURES:-

- Strike Plate & Face Plate Stainless Steel.
- Brass Dead Bolt
- Available with bolt through provision for 38 to 40 mm bolt through centre.
- Dead Bolt tested for 50,000 Cycles.
- Compatible with LAA1235, LAA1240, LAA1245 Rebate Set.

Finish Available : SATIN, POLISHED

Also Available in Radius Corner (LAL1686,LAL1677,LAL1678)

CE EURO PROFILE DEAD BOLT ONLY IN LOCK BODY DOUBLE THROW (72MM CENTRE)



12209:2003



1634-1



CF 5531



CE 2812



FIRE TESTED
FD-20/30/60/90/120
MINUTES



TECHNICAL DATA

ITEM CODE	SIZE	BACKSET	CASE SIZE	PCS. IN INNER	PCS. IN OUTER	PCS. IN PALLET
LAL1693	50X72	50	78X165	1	10	1080
LAL1723	55X72	55	83X165	1	10	1080
LAL1724	60X72	60	88X165	1	10	1080

BSEN : 12209:2003 3 X 8 1 0 G 3 B C 0 0

FEATURES:-

- Strike Plate & Face Plate Stainless Steel.
- Zinc Dead Bolt
- Available with bolt through provision for 38 to 40 mm bolt through centre.
- Dead Bolt tested for 50,000 Cycles.
- Compatible with LAA1235, LAA1240, LAA1245 Rebate Set.

Finish Available : SATIN, POLISHED

Also Available in Radius Corner (LAL1694,LAL1725,LAL1726)

* Note : All Dimensions are in mm.



CE BATHROOM LOCK BODY (78MM CENTRE) SINGLE THROW



12209:2003



1634-1



CF 5531



CE 2812



FIRE TESTED
FD-20/30/60/90/120
MINUTES



TECHNICAL DATA

ITEM CODE	SIZE	BACKSET	CASE SIZE	PCS. IN INNER	PCS. IN OUTER	PCS. IN PALLET
LAL1625	60X78	60	88X165	1	10	1080
LAL1695	60X78	60	88X165	1	10	1080

BSEN : 12209:2003

3	X	8	1	0	G	-	B	G	2	0
---	---	---	---	---	---	---	---	---	---	---

FEATURES:-

- Easily reversible mechanism by turning live bolt as suitable for inward / outward opening door & screwing main face plate.
- Follower is suitable for 8mm square spindle.
- Strike Plate & Face Plate Stainless Steel.
- Brass Live Bolt, Brass Dead Bolt, Brass Follower.
- Available with bolt through provision for 38 to 42 mm bolt through centre.
- Live Bolt Tested for 200,000 Cycles & Dead Bolt for 50,000 Cycles.
- LAL1625 Single Throw Variant, LAL1626 Single Throw Radius Corner Variant.
- Compatible with LAA1235, LAA1240, LAA1245 Rebate Set.

Finish Available : SATIN, POLISHED

Also Available in Radius Corner (LAL1626).

LAL1696 Radius Corner

CE BATHROOM LOCK BODY (78MM CENTRE) DOUBLE THROW



12209:2003



1634-1



CF 5531



CE 2812



FIRE TESTED
FD-20/30/60/90/120
MINUTES



TECHNICAL DATA

ITEM CODE	SIZE	BACKSET	CASE SIZE	PCS. IN INNER	PCS. IN OUTER	PCS. IN PALLET
LAL1627	60X78	60	88X165	1	10	1080
LAL1697	60X78	60	88X165	1	10	1080

BSEN : 12209:2003

3	X	8	1	0	G	-	B	G	2	0
---	---	---	---	---	---	---	---	---	---	---

FEATURES:-

- Easily reversible mechanism by turning live bolt as suitable for inward / outward opening door & screwing main face plate.
- Follower is suitable for 8mm square spindle.
- Strike Plate & Face Plate Stainless Steel.
- Zinc Live Bolt, Zinc Dead Bolt, Zinc Follower.
- Available with bolt through provision for 38 to 42 mm bolt through centre.
- Live Bolt Tested for 200,000 Cycles & Dead Bolt for 50,000 Cycles.
- Compatible with LAA1235, LAA1240, LAA1245 Rebate Set.

Finish Available : SATIN, POLISHED

LAL1695 single throw variant, LAL1628 Radius corner

LAL1698 Radius corner

* Note : All Dimensions are in mm.



CE EURO PROFILE LOCK BODY SINGLE THROW (85MM CENTRE)



12209:2003



1634-1



CF 5531



CE 2812



FIRE TESTED
FD-20/30/60/90/120
MINUTES



TECHNICAL DATA

ITEM CODE	SIZE	BACKSET	CASE SIZE	PCS. IN INNER	PCS. IN OUTER	PCS. IN PALLET
LAL5637	55X85	55	83X165	1	10	1080
LAL5638	60X85	60	88X165	1	10	1080

BSEN : 12209:2003 **3 X 8 1 0 G 3 B A 2 0**

FEATURES:-

- Easily reversible mechanism by turning live bolt as suitable for inward / outward opening door & screwing main face plate.
- Follower is suitable for 8mm square spindle.
- Strike Plate & Face Plate Stainless Steel.
- Brass Live Bolt, Brass Dead Bolt, Zinc Follower.
- Available with bolt through provision for 38 mm bolt through centre.
- Live Bolt Tested for 200,000 Cycles & Dead Bolt for 50,000 Cycles.
- Operation: Deadbolt operated by Euro Cylinders.
- Available as latch only and dead lock only variants.
- Compatible with LAA1235, LAA1240, LAA1245 Rebate Set.

Finish Available : **SATIN, POLISHED**

Also Available In Radius Corner (LAL5641,LAL5642)

CE EURO PROFILE LOCK BODY SINGLE THROW (85MM CENTRE)



12209:2003



1634-1



CF 5531



CE 2812



FIRE TESTED
FD-20/30/60/90/120
MINUTES



TECHNICAL DATA

ITEM CODE	SIZE	BACKSET	CASE SIZE	PCS. IN INNER	PCS. IN OUTER	PCS. IN PALLET
LAL5645	55X85	55	83X165	1	10	1080
LAL5646	60X85	60	88X165	1	10	1080

BSEN : 12209:2003 **3 X 8 1 0 G 3 B A 2 0**

FEATURES:-

- Easily reversible mechanism by turning live bolt as suitable for inward / outward opening door & screwing main face plate.
- Follower is suitable for 8mm square spindle.
- Strike Plate & Face Plate Stainless Steel.
- Zinc Live Bolt, Zinc Dead Bolt, Zinc Follower.
- Available with bolt through provision for 38 mm bolt through centre.
- Live Bolt Tested for 200,000 Cycles & Dead Bolt for 50,000 Cycles.
- Operation: Deadbolt operated by Euro Cylinders.
- Available as latch only and dead lock only variants.
- Compatible with LAA1235, LAA1240, LAA1245 Rebate Set.

Finish Available : **SATIN, POLISHED**

Also Available In Radius Corner (LAL5649,LAL5650)

* Note : All Dimensions are in mm.



CE EURO PROFILE LOCK BODY DOUBLE THROW (85MM CENTRE)



12209:2003



1634-1



CF 5531



CE 2812



FIRE TESTED
FD-20/30/60/90/120
MINUTES



TECHNICAL DATA

ITEM CODE	SIZE	BACKSET	CASE SIZE	PCS. IN INNER	PCS. IN OUTER	PCS. IN PALLET
LAL5601	50X85	50	78X165	1	10	1080
LAL5602	55X85	55	83X165	1	10	1080
LAL5603	60X85	60	88X165	1	10	1080

BSEN : 12209:2003 **3 X 8 1 0 G 3 B C 2 0**

FEATURES:-

- Easily reversible mechanism by turning live bolt as suitable for inward / outward opening door & screwing main face plate.
- Follower is suitable for 8mm square spindle.
- Strike Plate & Face Plate Stainless Steel.
- Brass Live Bolt, Brass Dead Bolt, Zinc Follower.
- Available with bolt through provision for 38 mm bolt through centre.
- Live Bolt Tested for 200,000 Cycles & Dead Bolt for 50,000 Cycles.
- Operation: Deadbolt operated by Euro Cylinders.
- Available as latch only and dead lock only variants.
- Compatible with LAA1235, LAA1240, LAA1245 Rebate Set.

Finish Available : **SATIN, POLISHED**

Also Available in Radius Corner (LAL5610,LAL5611,LAL5612)

CE EURO PROFILE LOCK BODY DOUBLE THROW (85MM CENTRE)



12209:2003



1634-1



CF 5531



CE 2812



FIRE TESTED
FD-20/30/60/90/120
MINUTES



TECHNICAL DATA

ITEM CODE	SIZE	BACKSET	CASE SIZE	PCS. IN INNER	PCS. IN OUTER	PCS. IN PALLET
LAL5619	50X85	50	78X165	1	10	1080
LAL5620	55X85	55	83X165	1	10	1080
LAL5621	60X85	60	88X165	1	10	1080

BSEN : 12209:2003 **3 X 8 1 0 G 3 B C 2 0**

FEATURES:-

- Easily reversible mechanism by turning live bolt as suitable for inward / outward opening door & screwing main face plate.
- Follower is suitable for 8mm square spindle.
- Strike Plate & Face Plate Stainless Steel.
- Zinc Live Bolt, Zinc Dead Bolt, Zinc Follower.
- Available with bolt through provision for 38 mm bolt through centre.
- Live Bolt Tested for 200,000 Cycles & Dead Bolt for 50,000 Cycles.
- Operation: Deadbolt operated by Euro Cylinders.
- Available as latch only and dead lock only variants.
- Compatible with LAA1235, LAA1240, LAA1245 Rebate Set.

Finish Available : **SATIN, POLISHED**

Also Available in Radius Corner (LAL5628,LAL5629,LAL5630)

* Note : All Dimensions are in mm.



CE EURO PROFILE LATCH ONLY IN LOCK BODY (85MM CENTRE)



12209:2003



1634-1



CF 5531



CE 2812



FIRE TESTED
FD-20/30/60/90/120
MINUTES



TECHNICAL DATA

ITEM CODE	SIZE	BACKSET	CASE SIZE	PCS. IN INNER	PCS. IN OUTER	PCS. IN PALLET
LAL5604	50X85	50	78X165	1	10	1080
LAL5605	55X85	55	83X165	1	10	1080
LAL5606	60X85	60	88X165	1	10	1080

BSEN : 12209:2003 3 X 8 1 0 G - B 0 2 0

FEATURES:-

- Easily reversible mechanism by turning live bolt as suitable for inward / outward opening door & screwing main face plate.
- Follower is suitable for 8mm square spindle.
- Strike Plate & Face Plate Stainless Steel.
- Brass Live Bolt, Zinc Follower.
- Available with bolt through provision for 38 to 40 mm bolt through centre.
- Live Bolt Tested for 200,000 Cycles
- Compatible with LAA1235, LAA1240, LAA1245 Rebate Set.

Finish Available : SATIN, POLISHED

Also Available In Radius Corner (LAL5613,LAL5614,LAL5615)

CE EURO PROFILE LATCH ONLY IN LOCK BODY (85MM CENTRE)



12209:2003



1634-1



CF 5531



CE 2812



FIRE TESTED
FD-20/30/60/90/120
MINUTES



TECHNICAL DATA

ITEM CODE	SIZE	BACKSET	CASE SIZE	PCS. IN INNER	PCS. IN OUTER	PCS. IN PALLET
LAL5622	50X85	50	78X165	1	10	1080
LAL5623	55X85	55	83X165	1	10	1080
LAL5624	60X85	60	88X165	1	10	1080

BSEN : 12209:2003 3 X 8 1 0 G - B 0 2 0

FEATURES:-

- Easily reversible mechanism by turning live bolt as suitable for inward / outward opening door & screwing main face plate.
- Follower is suitable for 8mm square spindle.
- Strike Plate & Face Plate Stainless Steel.
- Zinc Live Bolt, Zinc Follower.
- Available with bolt through provision for 38 to 40 mm bolt through centre.
- Live Bolt Tested for 200,000 Cycles
- Compatible with LAA1235, LAA1240, LAA1245 Rebate Set.

Finish Available : SATIN, POLISHED

Also Available In Radius Corner (LAL5631,LAL5632,LAL5633)

* Note : All Dimensions are in mm.



CE EURO PROFILE DEAD BOLT ONLY IN LOCK BODY SINGLE THROW (85MM CENTRE)



FIRE TESTED
FD-20/30/60/90/120
MINUTES



TECHNICAL DATA

ITEM CODE	SIZE	BACKSET	CASE SIZE	PCS. IN INNER	PCS. IN OUTER	PCS. IN PALLET
LAL5639	55X85	55	83X165	1	10	1080
LAL5640	60X85	60	88X165	1	10	1080

BSEN : 12209:2003 3 X 8 1 0 G 3 B A 0 0

FEATURES:-

- Strike Plate & Face Plate Stainless Steel.
- Brass Dead Bolt
- Available with bolt through provision for 38 to 40 mm bolt through centre.
- Dead Bolt tested for 50,000 Cycles.
- Compatible with LAA1235, LAA1240, LAA1245 Rebate Set.

Finish Available : SATIN, POLISHED

Also Available in Radius Corner (LAL5643,LAL5644)

CE EURO PROFILE DEAD BOLT ONLY IN LOCK BODY SINGLE THROW (85MM CENTRE)



FIRE TESTED
FD-20/30/60/90/120
MINUTES



TECHNICAL DATA

ITEM CODE	SIZE	BACKSET	CASE SIZE	PCS. IN INNER	PCS. IN OUTER	PCS. IN PALLET
LAL5647	55X85	55	83X165	1	10	1080
LAL5648	60X85	60	88X165	1	10	1080

BSEN : 12209:2003 3 X 8 1 0 G 3 B A 0 0

FEATURES:-

- Strike Plate & Face Plate Stainless Steel.
- Zinc Dead Bolt
- Available with bolt through provision for 38 to 40 mm bolt through centre.
- Dead Bolt tested for 50,000 Cycles.
- Compatible with LAA1235, LAA1240, LAA1245 Rebate Set.

Finish Available : SATIN, POLISHED

Also Available in Radius Corner (LAL5651,LAL5652)

* Note : All Dimensions are in mm.

CE EURO PROFILE DEAD BOLT ONLY IN LOCK BODY DOUBLE THROW (85MM CENTRE)



FIRE TESTED
FD-20/30/60/90/120
MINUTES



TECHNICAL DATA

ITEM CODE	SIZE	BACKSET	CASE SIZE	PCS. IN INNER	PCS. IN OUTER	PCS. IN PALLET
LAL5607	50X85	50	78X165	1	10	1080
LAL5608	55X85	55	83X165	1	10	1080
LAL5609	60X85	60	88X165	1	10	1080

BSEN : 12209:2003 3 X 8 1 0 G 3 B C 0 0

FEATURES:-

- Strike Plate & Face Plate Stainless Steel.
- Brass Dead Bolt
- Available with bolt through provision for 38 to 40 mm bolt through centre.
- Dead Bolt tested for 50,000 Cycles.
- Compatible with LAA1235, LAA1240, LAA1245 Rebate Set.

Finish Available : SATIN, POLISHED

Also Available in Radius Corner (LAL5616,LAL5617,LAL5618)

CE EURO PROFILE DEAD BOLT ONLY IN LOCK BODY DOUBLE THROW (85MM CENTRE)



FIRE TESTED
FD-20/30/60/90/120
MINUTES



TECHNICAL DATA

ITEM CODE	SIZE	BACKSET	CASE SIZE	PCS. IN INNER	PCS. IN OUTER	PCS. IN PALLET
LAL5625	50X85	50	78X165	1	10	1080
LAL5626	55X85	55	83X165	1	10	1080
LAL5627	60X85	60	88X165	1	10	1080

BSEN : 12209:2003 3 X 8 1 0 G 3 B C 0 0

FEATURES:-

- Strike Plate & Face Plate Stainless Steel.
- Zinc Dead Bolt
- Available with bolt through provision for 38 to 40 mm bolt through centre.
- Dead Bolt tested for 50,000 Cycles.
- Compatible with LAA1235, LAA1240, LAA1245 Rebate Set.

Finish Available : SATIN, POLISHED

Also Available in Radius Corner (LAL5634,LAL5635,LAL5636)

* Note : All Dimensions are in mm.



NIGHT LATCH (72MM CENTRE)



TECHNICAL DATA

ITEM CODE	SIZE	BACKSET	CASE SIZE	PCS. IN INNER	PCS. IN OUTER	PCS. IN PALLET
LAL1735	50X72	50	75X170	1	10	1080
LAL1736	55X72	55	80X170	1	10	1080
LAL1737	60X72	60	85X170	1	10	1080

BSEN : 12209:2003 2 M 8 1 0 G - B 0 1 0

FEATURES:-

- Easily reversible mechanism by turning live bolt as suitable for inward / outward opening door & screwing main face plate.
- Follower is suitable for 8mm square spindle.
- Strike Plate & Face Plate Stainless Steel.
- Brass Live Bolt, Zinc Follower.
- Available with bolt through provision for 38 mm bolt through centre.
- Live Bolt Tested for 200,000 Cycles
- Operation: Latch operated by Euro Cylinders and Lever Handle

Finish Available : SATIN, POLISHED

Also Available In Radius Corner (LAL1741,LAL1742,LAL1743)

NIGHT LATCH (85MM CENTRE)



TECHNICAL DATA

ITEM CODE	SIZE	BACKSET	CASE SIZE	PCS. IN INNER	PCS. IN OUTER	PCS. IN PALLET
LAL1738	50X85	50	75X170	1	10	1080
LAL1739	55X85	55	80X170	1	10	1080
LAL1740	60X85	60	85X170	1	10	1080

BSEN : 12209:2003 2 M 8 1 0 G - B 0 1 0

FEATURES:-

- Easily reversible mechanism by turning live bolt as suitable for inward / outward opening door & screwing main face plate.
- Follower is suitable for 8mm square spindle.
- Strike Plate & Face Plate Stainless Steel.
- Brass Live Bolt, Zinc Follower.
- Available with bolt through provision for 38 mm bolt through centre.
- Live Bolt Tested for 200,000 Cycles
- Operation: Latch operated by Euro Cylinders and Lever Handle

Finish Available : SATIN, POLISHED

Also Available In Radius Corner (LAL1744,LAL1745,LAL1746)

* Note : All Dimensions are in mm.



EURO PROFILE ROLLER LOCK BODY SINGLE THROW (72MM CENTRE)



TECHNICAL DATA

ITEM CODE	SIZE	BACKSET	CASE SIZE	PCS. IN INNER	PCS. IN OUTER	PCS. IN PALLET
LAL1817	55X72	55	83X165	1	10	1080
LAL1818	60X72	60	88X165	1	10	1080

BSEN : 12209:2003 **3 C 8 0 0 G 2 B A 1 0**

FEATURES:-

- Roller latch Body for dual side opening doors.
- Follower is suitable for 8mm square spindle.
- Strike Plate & Face Plate Stainless Steel.
- Zinc Roller Bolt, Brass Dead Bolt, Brass Follower.
- Available with bolt through provision for 38 mm bolt through centre.
- Roller Bolt Tested for 200,000 Cycles & Dead Bolt for 50,000 Cycles.
- Operation: Deadbolt operated by Euro Cylinders.
- Available as latch only and dead lock only variants.
- Compatible with LAA1235, LAA1240, LAA1245 Rebate Set.

Finish Available : SATIN, POLISHED

Also Available In Radius Corner (LAL1819,LAL1820)

EURO PROFILE ROLLER LOCK BODY SINGLE THROW (72MM CENTRE)



TECHNICAL DATA

ITEM CODE	SIZE	BACKSET	CASE SIZE	PCS. IN INNER	PCS. IN OUTER	PCS. IN PALLET
LAL1870	55X72	55	83X165	1	10	1080
LAL1871	60X72	60	88X165	1	10	1080

BSEN : 12209:2003 **3 C 8 0 0 G 2 B A 1 0**

FEATURES:-

- Roller latch Body for dual side opening doors.
- Follower is suitable for 8mm square spindle.
- Strike Plate & Face Plate Stainless Steel.
- Zinc Roller Bolt, Zinc Dead Bolt, Zinc Follower.
- Available with bolt through provision for 38 mm bolt through centre.
- Roller Bolt Tested for 200,000 Cycles & Dead Bolt for 50,000 Cycles.
- Operation: Deadbolt operated by Euro Cylinders.
- Available as latch only and dead lock only variants.
- Compatible with LAA1235, LAA1240, LAA1245 Rebate Set.

Finish Available : SATIN, POLISHED

Also Available In Radius Corner (LAL1873,LAL1872)

* Note : All Dimensions are in mm.



EURO PROFILE ROLLER LOCK BODY DOUBLE THROW (72MM CENTRE)



TECHNICAL DATA

ITEM CODE	SIZE	BACKSET	CASE SIZE	PCS. IN INNER	PCS. IN OUTER	PCS. IN PALLET
LAL1825	50X72	50	78X165	1	10	1080
LAL1826	55X72	55	83X165	1	10	1080
LAL1827	60X72	60	88X165	1	10	1080

BSEN : 12209:2003 **3 C 8 0 0 G 2 B A 1 0**

FEATURES:-

- Roller latch Body for dual side opening doors.
- Follower is suitable for 8mm square spindle.
- Strike Plate & Face Plate Stainless Steel.
- Zinc Roller Bolt, Brass Dead Bolt, Brass Follower.
- Available with bolt through provision for 38 mm bolt through centre.
- Roller Bolt Tested for 200,000 Cycles & Dead Bolt for 50,000 Cycles.
- Operation: Deadbolt operated by Euro Cylinders.
- Available as latch only and dead lock only variants.
- Compatible with LAA1235, LAA1240, LAA1245 Rebate Set.

Finish Available : **SATIN, POLISHED**

Also Available In Radius Corner (LAL1828,LAL1829, LAL1830)

EURO PROFILE ROLLER LOCK BODY DOUBLE THROW (72MM CENTRE)



TECHNICAL DATA

ITEM CODE	SIZE	BACKSET	CASE SIZE	PCS. IN INNER	PCS. IN OUTER	PCS. IN PALLET
LAL1878	50X72	50	78X165	1	10	1080
LAL1879	55X72	55	83X165	1	10	1080
LAL1880	60X72	60	88X165	1	10	1080

BSEN : 12209:2003 **3 C 8 0 0 G 2 B A 1 0**

FEATURES:-

- Roller latch Body for dual side opening doors.
- Follower is suitable for 8mm square spindle.
- Strike Plate & Face Plate Stainless Steel.
- Zinc Roller Bolt, Zinc Dead Bolt, Zinc Follower.
- Available with bolt through provision for 38 mm bolt through centre.
- Roller Bolt Tested for 200,000 Cycles & Dead Bolt for 50,000 Cycles.
- Operation: Deadbolt operated by Euro Cylinders.
- Available as latch only and dead lock only variants.
- Compatible with LAA1235, LAA1240, LAA1245 Rebate Set.

Finish Available : **SATIN, POLISHED**

Also Available In Radius Corner (LAL1873,LAL1882, LAL1883)

* Note : All Dimensions are in mm.



EURO PROFILE ROLLER LATCH IN LOCK BODY



TECHNICAL DATA

ITEM CODE	SIZE	BACKSET	CASE SIZE	PCS. IN INNER	PCS. IN OUTER	PCS. IN PALLET
LAL1921	50X72	50	78X165	1	10	1080
LAL1922	55X72	55	83X165	1	10	1080
LAL1923	60X72	60	88X165	1	10	1080

FEATURES:-

- Roller latch Body for dual side opening doors.
- Follower is suitable for 8mm square spindle.
- Strike Plate & Face Plate Stainless Steel.
- Brass Roller Bolt, Brass Follower.
- Available with bolt through provision for 38 mm bolt through centre.
- Roller Bolt Tested for 200,000 Cycles
- Compatible with LAA1235, LAA1240, LAA1245 Rebate Set.

Finish Available : SATIN, POLISHED

Also Available In Radius Corner (LAL1924,LAL1925, LAL1926)

EURO PROFILE ROLLER LATCH IN LOCK BODY



TECHNICAL DATA

ITEM CODE	SIZE	BACKSET	CASE SIZE	PCS. IN INNER	PCS. IN OUTER	PCS. IN PALLET
LAL1927	50X72	50	78X165	1	10	1080
LAL1928	55X72	55	83X165	1	10	1080
LAL1929	60X72	60	88X165	1	10	1080

FEATURES:-

- Roller latch Body for dual side opening doors.
- Follower is suitable for 8mm square spindle.
- Strike Plate & Face Plate Stainless Steel.
- Zinc Roller Bolt, Zinc Follower.
- Available with bolt through provision for 38 mm bolt through centre.
- Roller Bolt Tested for 200,000 Cycles
- Compatible with LAA1235, LAA1240, LAA1245 Rebate Set.

Finish Available : SATIN, POLISHED

Also Available In Radius Corner (LAL1930,LAL1931, LAL1932)

* Note : All Dimensions are in mm.



BATHROOM LOCK BODY DOUBLE THROW(78MM CENTRE)



TECHNICAL DATA

ITEM CODE	SIZE	BACKSET	CASE SIZE	PCS. IN INNER	PCS. IN OUTER	PCS. IN PALLET
LAL1842	50X78	50	78X165	1	10	1080
LAL1843	55X78	55	83X165	1	10	1080

BSEN : 12209-2003

3	X	8	1	0	G	-	B	G	2	0
---	---	---	---	---	---	---	---	---	---	---

FEATURES:-

- Easily reversible mechanism by turning live bolt as suitable for inward / outward opening door & screwing main face plate.
- Follower is suitable for 8mm square spindle.
- Strike Plate & Face Plate Stainless Steel.
- Brass Live Bolt, Brass Dead Bolt, Brass Follower.
- Available with bolt through provision for 38 to 42 mm bolt through centre.
- Live Bolt Tested for 200,000 Cycles & Dead Bolt for 50,000 Cycles.
- LAL1838 Single Throw Variant, LAL1840 Single Throw Radius Corner Variant for 55 mm Backset
- Compatible with LAA1235, LAA1240, LAA1245 Rebate Set.

Finish Available : **SATIN, POLISHED**

Also Available In Radius Corner (LAL1844, LAL1845)

BATHROOM LOCK BODY DOUBLE THROW(78MM CENTRE)



TECHNICAL DATA

ITEM CODE	SIZE	BACKSET	CASE SIZE	PCS. IN INNER	PCS. IN OUTER	PCS. IN PALLET
LAL1899	50X78	50	78X165	1	10	1080
LAL1900	55X78	55	83X165	1	10	1080

BSEN : 12209-2003

3	X	8	1	0	G	-	B	G	2	0
---	---	---	---	---	---	---	---	---	---	---

FEATURES:-

- Easily reversible mechanism by turning live bolt as suitable for inward / outward opening door & screwing main face plate.
- Follower is suitable for 8mm square spindle.
- Strike Plate & Face Plate Stainless Steel.
- Zinc Live Bolt, Zinc Dead Bolt, Zinc Follower.
- Available with bolt through provision for 38 to 42 mm bolt through centre.
- Live Bolt Tested for 200,000 Cycles & Dead Bolt for 50,000 Cycles.
- LAL1896 Single Throw Variant, LAL1898 Single Throw Radius Corner Variant for 55 mm Backset
- Compatible with LAA1235, LAA1240, LAA1245 Rebate Set.

Finish Available : **SATIN, POLISHED**

Also Available In Radius Corner (LAL1901, LAL1902)

* Note : All Dimensions are in mm.



BATHROOM ROLLER LOCK BODY SINGLE THROW (78MM CENTRE)



TECHNICAL DATA

ITEM CODE	SIZE	BACKSET	CASE SIZE	PCS. IN INNER	PCS. IN OUTER	PCS. IN PALLET
LAL1847	55X78	55	83X165	1	10	1080
LAL1848	60X78	60	88X165	1	10	1080

BSEN : 12209:2003 **3 C 8 0 0 G - B G 1 0**

FEATURES:-

- Roller latch Body for dual side opening doors.
- Follower is suitable for 8mm square spindle.
- Strike Plate & Face Plate Stainless Steel.
- Brass Roller Bolt, Brass Dead Bolt, Brass Follower.
- Available with bolt through provision for 38 mm bolt through centre.
- Roller Bolt Tested for 200,000 Cycles & Dead Bolt for 50,000 Cycles.
- Compatible with LAA1235, LAA1240, LAA1245 Rebate Set.

Finish Available : **SATIN, POLISHED**

Also Available In Radius Corner (LAL1850,LAL1851)

BATHROOM ROLLER LOCK BODY SINGLE THROW (78MM CENTRE)



TECHNICAL DATA

ITEM CODE	SIZE	BACKSET	CASE SIZE	PCS. IN INNER	PCS. IN OUTER	PCS. IN PALLET
LAL1904	55X78	55	83X165	1	10	1080
LAL1905	60X78	60	88X165	1	10	1080

BSEN : 12209:2003 **3 C 8 0 0 G - B G 1 0**

FEATURES:-

- Roller latch Body for dual side opening doors.
- Follower is suitable for 8mm square spindle.
- Strike Plate & Face Plate Stainless Steel.
- Zinc Roller Bolt, Zinc Dead Bolt, Zinc Follower.
- Available with bolt through provision for 38 mm bolt through centre.
- Roller Bolt Tested for 200,000 Cycles & Dead Bolt for 50,000 Cycles.
- Compatible with LAA1235, LAA1240, LAA1245 Rebate Set.

Finish Available : **SATIN, POLISHED**

Also Available In Radius Corner (LAL1907,LAL1908)

* Note : All Dimensions are in mm.



BATHROOM ROLLER LOCK BODY DOUBLE THROW (78MM CENTRE)



TECHNICAL DATA

ITEM CODE	SIZE	BACKSET	CASE SIZE	PCS. IN INNER	PCS. IN OUTER	PCS. IN PALLET
LAL1852	50X78	50	78X165	1	10	1080
LAL1853	55X78	55	83X165	1	10	1080
LAL1854	60X78	60	88X165	1	10	1080

BSEN : 12209:2003 **3 C 8 0 0 G - B G 1 0**

FEATURES:-

- Roller latch Body for dual side opening doors.
- Follower is suitable for 8mm square spindle.
- Strike Plate & Face Plate Stainless Steel.
- Brass Roller Bolt, Brass Dead Bolt, Brass Follower.
- Available with bolt through provision for 38 mm bolt through centre.
- Roller Bolt Tested for 200,000 Cycles & Dead Bolt for 50,000 Cycles.
- Compatible with LAA1235, LAA1240, LAA1245 Rebate Set.

Finish Available : **SATIN, POLISHED**

Also Available In Radius Corner (LAL1855,LAL1856, LAL1857)

BATHROOM ROLLER LOCK BODY DOUBLE THROW (78MM CENTRE)



TECHNICAL DATA

ITEM CODE	SIZE	BACKSET	CASE SIZE	PCS. IN INNER	PCS. IN OUTER	PCS. IN PALLET
LAL1909	50X78	50	78X165	1	10	1080
LAL1910	55X78	55	83X165	1	10	1080
LAL1911	60X78	60	88X165	1	10	1080

BSEN : 12209:2003 **3 C 8 0 0 G - B G 1 0**

FEATURES:-

- Roller latch Body for dual side opening doors.
- Follower is suitable for 8mm square spindle.
- Strike Plate & Face Plate Stainless Steel.
- Zinc Roller Bolt, Zinc Dead Bolt, Zinc Follower.
- Available with bolt through provision for 38 mm bolt through centre.
- Roller Bolt Tested for 200,000 Cycles & Dead Bolt for 50,000 Cycles.
- Compatible with LAA1235, LAA1240, LAA1245 Rebate Set.

Finish Available : **SATIN, POLISHED**

Also Available In Radius Corner (LAL1912,LAL1913, LAL1914)

* Note : All Dimensions are in mm.



EURO PROFILE ROLLER LOCK BODY SINGLE THROW (85MM CENTRE)



12209:2003



1634-1

TECHNICAL DATA

ITEM CODE	SIZE	BACKSET	CASE SIZE	PCS. IN INNER	PCS. IN OUTER	PCS. IN PALLET
LAL1821	55X85	55	83X165	1	10	1080
LAL1822	60X85	60	88X165	1	10	1080

BSEN : 12209:2003 3 C 8 0 0 G 2 B A 1 0

FEATURES:-

- Roller latch Body for dual side opening doors.
- Follower is suitable for 8mm square spindle.
- Strike Plate & Face Plate Stainless Steel.
- Zinc Roller Bolt, Brass Dead Bolt, Brass Follower.
- Available with bolt through provision for 38 mm bolt through centre.
- Roller Bolt Tested for 200,000 Cycles & Dead Bolt for 50,000 Cycles.
- Operation: Deadbolt operated by Euro Cylinders.
- Available as latch only and dead lock only variants.
- Compatible with LAA1235, LAA1240, LAA1245 Rebate Set.

Finish Available : **SATIN, POLISHED**

Also Available In Radius Corner (LAL1823,LAL1824)

EURO PROFILE ROLLER LOCK BODY SINGLE THROW (85MM CENTRE)



12209:2003



1634-1



FIRE TESTED
FD-20/30/60

TECHNICAL DATA

ITEM CODE	SIZE	BACKSET	CASE SIZE	PCS. IN INNER	PCS. IN OUTER	PCS. IN PALLET
LAL1874	55X85	55	83X165	1	10	1080
LAL1875	60X85	60	88X165	1	10	1080

BSEN : 12209:2003 3 C 8 0 0 G 2 B A 1 0

FEATURES:-

- Roller latch Body for dual side opening doors.
- Follower is suitable for 8mm square spindle.
- Strike Plate & Face Plate Stainless Steel.
- Zinc Roller Bolt, Zinc Dead Bolt, Zinc Follower.
- Available with bolt through provision for 38 mm bolt through centre.
- Roller Bolt Tested for 200,000 Cycles & Dead Bolt for 50,000 Cycles.
- Operation: Deadbolt operated by Euro Cylinders.
- Available as latch only and dead lock only variants.
- Compatible with LAA1235, LAA1240, LAA1245 Rebate Set.

Finish Available : **SATIN, POLISHED**

Also Available In Radius Corner (LAL1876,LAL1877)

* Note : All Dimensions are in mm.



EURO PROFILE ROLLER LOCK BODY DOUBLE THROW (85MM CENTRE)



TECHNICAL DATA

ITEM CODE	SIZE	BACKSET	CASE SIZE	PCS. IN INNER	PCS. IN OUTER	PCS. IN PALLET
LAL1831	50X85	50	78X165	1	10	1080
LAL1832	55X85	55	83X165	1	10	1080
LAL1833	60X85	60	88X165	1	10	1080

BSEN : 12209:2003 3 C 8 0 0 G 2 B A 1 0

FEATURES:-

- Roller latch Body for dual side opening doors.
- Follower is suitable for 8mm square spindle.
- Strike Plate & Face Plate Stainless Steel.
- Zinc Roller Bolt, Brass Dead Bolt, Brass Follower.
- Available with bolt through provision for 38 mm bolt through centre.
- Roller Bolt Tested for 200,000 Cycles & Dead Bolt for 50,000 Cycles.
- Operation: Deadbolt operated by Euro Cylinders.
- Available as latch only and dead lock only variants.
- Compatible with LAA1235, LAA1240, LAA1245 Rebate Set.

Finish Available : SATIN, POLISHED

Also Available In Radius Corner (LAL1834,LAL1835, LAL1836)

EURO PROFILE ROLLER LOCK BODY DOUBLE THROW (85MM CENTRE)



TECHNICAL DATA

ITEM CODE	SIZE	BACKSET	CASE SIZE	PCS. IN INNER	PCS. IN OUTER	PCS. IN PALLET
LAL1983	50X85	50	78X165	1	10	1080
LAL1984	55X85	55	83X165	1	10	1080
LAL1985	60X85	60	88X165	1	10	1080

BSEN : 12209:2003 3 C 8 0 0 G 2 B A 1 0

FEATURES:-

- Roller latch Body for dual side opening doors.
- Follower is suitable for 8mm square spindle.
- Strike Plate & Face Plate Stainless Steel.
- Zinc Roller Bolt, Zinc Dead Bolt, Zinc Follower.
- Available with bolt through provision for 38 mm bolt through centre.
- Roller Bolt Tested for 200,000 Cycles & Dead Bolt for 50,000 Cycles.
- Operation: Deadbolt operated by Euro Cylinders.
- Available as latch only and dead lock only variants.
- Compatible with LAA1235, LAA1240, LAA1245 Rebate Set.

Finish Available : SATIN, POLISHED

Also Available In Radius Corner (LAL1986,LAL1987, LAL1988)

* Note : All Dimensions are in mm.



CE EURO PROFILE SASH LOCK BODY (72MM CENTRE)



12209:2003



1634-1



CF 5531



CE 2812



FIRE TESTED
FD-20/30/60/90/120
MINUTES



TECHNICAL DATA

ITEM CODE	SIZE	BACKSET	CASE SIZE	PCS. IN INNER	PCS. IN OUTER	PCS. IN PALLET
LAL4005	50X72	50	78X165	1	10	1080
LAL4029	55X72	55	83X165	1	10	1080
LAL4053	60X72	60	88X165	1	10	1080

BSEN : 12209:2003 **2 M 4 1 0 F 2 B C 1 0**

FEATURES:-

- Easy reversible mechanism - Push from Rear & Turn.
- Follower is suitable for 8mm square spindle.
- Strike Plate & Face Plate Stainless Steel.
- Brass Live Bolt, Zinc Dead Bolt, Brass Follower.
- Available with bolt through provision for 38 to 40 mm bolt through centre.
- Live Bolt Tested for 200,000 Cycles & Dead Bolt for 50,000 Cycles.
- Operation: Deadbolt operated by Euro Profile Cylinders.
- Compatible with LAA1235, LAA1240, LAA1245 Rebate Set.

Finish Available : **SATIN, POLISHED**

Also Available In Radius Corner (LAL4006,LAL4030,LAL4054)

CE EURO PROFILE LATCH ONLY IN SASH LOCK BODY (72MM CENTRE)



12209:2003



1634-1



CF 5531



CE 2812



FIRE TESTED
FD-20/30/60/90/120
MINUTES



TECHNICAL DATA

ITEM CODE	SIZE	BACKSET	CASE SIZE	PCS. IN INNER	PCS. IN OUTER	PCS. IN PALLET
LAL4011	50X72	50	78X165	1	10	1080
LAL4035	55X72	55	83X165	1	10	1080
LAL4059	60X72	60	88X165	1	10	1080

BSEN : 12209:2003 **2 M 4 1 0 F - B 0 1 0**

FEATURES:-

- Easy reversible mechanism - Push from Rear & Turn.
- Follower is suitable for 8mm square spindle.
- Strike Plate & Face Plate Stainless Steel.
- Brass Live Bolt, Brass Follower.
- Available with bolt through provision for 38 to 40 mm bolt through centre.
- Live Bolt Tested for 200,000 Cycles
- Compatible with Rebate Set LAA1235, LAA1240, LAA1245.

Finish Available : **SATIN, POLISHED**

Also Available In Radius Corner (LAL4012,LAL4036,LAL4060)

* Note : All Dimensions are in mm.



CE EURO PROFILE DEAD BOLT LOCK ONLY IN SASH LOCK BODY (72MM CENTRE)



12209:2003



1634-1



CF 5531



CE 2812



FIRE TESTED
FD-20/30/60/90/120
MINUTES



TECHNICAL DATA

ITEM CODE	SIZE	BACKSET	CASE SIZE	PCS. IN INNER	PCS. IN OUTER	PCS. IN PALLET
LAL4017	50X72	50	78X165	1	10	1080
LAL4041	55X72	55	83X165	1	10	1080
LAL4065	60X72	60	88X165	1	10	1080

BSEN : 12209:2003 **2 M 4 1 0 F 2 B C 0 0**

FEATURES:-

- Strike Plate & Face Plate Stainless Steel.
- Zinc Dead Bolt
- Available with bolt through provision for 38 to 40 mm bolt through centre.
- Dead Bolt tested for 50,000 Cycles.
- Compatible with Rebate Set LAA1235, LAA1240, LAA1245.

Finish Available : **SATIN, POLISHED**

Also Available in Radius Corner (LAL4018,LAL4042,LAL4066)

CE BATHROOM LOCK BODY DOUBLE TURN (72MM CENTRE)



12209:2003



1634-1



CF 5531



CE 2812



FIRE TESTED
FD-20/30/60/90/120
MINUTES



TECHNICAL DATA

ITEM CODE	SIZE	BACKSET	CASE SIZE	PCS. IN INNER	PCS. IN OUTER	PCS. IN PALLET
LAL4125	50X72	50	78X165	1	10	1080
LAL4131	55X72	55	83X165	1	10	1080
LAL4137	60X72	60	88X165	1	10	1080

BSEN : 12209:2003 **2 M 4 1 0 F 0 B G 1 0**

FEATURES:-

- Easy reversible mechanism - Push from Rear & Turn.
- Follower is suitable for 8mm square spindle.
- Strike Plate & Face Plate Stainless Steel.
- Brass Live Bolt, Zinc Dead Bolt, Brass Follower
- Available with bolt through provision for 38 to 40 mm bolt through centre.
- Live Bolt Tested for 200,000 Cycles & Dead Bolt for 50,000 Cycles.
- Turn for 5mm Square Snib.
- Compatible with LAA1235, LAA1240, LAA1245 Rebate Set.

Finish Available : **SATIN, POLISHED**

Also Available in Single Turn (LAL4111,LAL4117)

Also Available in Single Turn Radius Corner (LAL4112,LAL4118)

Also Available in Double Turn Radius Corner (LAL4126,LAL4132,LAL4138)

* Note : All Dimensions are in mm.



CE EURO PROFILE LOCK BODY (85MM CENTRE)



FIRE TESTED
FD-20/30/60/90/120
MINUTES



TECHNICAL DATA

ITEM CODE	SIZE	BACKSET	CASE SIZE	PCS. IN INNER	PCS. IN OUTER	PCS. IN PALLET
LAL3008	45X85	45	70X170	1	10	1080
LAL3009	50X85	50	75X170	1	10	1080
LAL3010	55X85	55	80X170	1	10	1080
LAL3011	60X85	60	85X170	1	10	1080

BSEN : 12209:2003 2 M 4 1 0 F 2 B C 1 0

FEATURES:-

- Easily reversible mechanism by moving Snib on body up, turning live bolt as suitable and pushing it back.
- Follower is suitable for 8mm square spindle.
- Strike Plate & Face Plate Stainless Steel.
- Brass Live Bolt, Brass Dead Bolt, Brass Follower.
- Available with bolt through provision for 38 to 42 mm bolt through centre.
- Live Bolt Tested for 200,000 Cycles & Dead Bolt for 50,000 Cycles.
- Operation: Deadbolt operated by Euro Cylinders.
- Available as latch only and dead lock only variants.
- Compatible with LAA1235, LAA1240, LAA1245 Rebate Set.

Finish Available : SATIN, POLISHED

CE EURO PROFILE LOCK BODY (85MM CENTRE)



FIRE TESTED
FD-20/30/60/90/120
MINUTES



TECHNICAL DATA

ITEM CODE	SIZE	BACKSET	CASE SIZE	PCS. IN INNER	PCS. IN OUTER	PCS. IN PALLET
LAL3128	45X85	45	70X170	1	10	1080
LAL3129	50X85	50	75X170	1	10	1080
LAL3130	55X85	55	80X170	1	10	1080
LAL3131	60X85	60	85X170	1	10	1080

BSEN : 12209:2003 2 M 4 1 0 F 2 B C 1 0

FEATURES:-

- Easily reversible mechanism by moving Snib on body up, turning live bolt as suitable and pushing it back.
- Follower is suitable for 8mm square spindle.
- Strike Plate & Face Plate Stainless Steel.
- Zinc Live Bolt, Zinc Dead Bolt, Zinc Follower.
- Available with bolt through provision for 38 to 42 mm bolt through centre.
- Live Bolt Tested for 200,000 Cycles & Dead Bolt for 50,000 Cycles.
- Operation: Deadbolt operated by Euro Cylinders.
- Available as latch only and dead lock only variants.
- Compatible with LAA1235, LAA1240, LAA1245 Rebate Set.

Finish Available : SATIN, POLISHED

Also Available radius corner LAL3164, LAL3165, LAL3166, LAL3167

* Note : All Dimensions are in mm.

CE EURO PROFILE LATCH ONLY IN LOCK BODY (85MM CENTRE)



12209:2003



1634-1



CF 5531



CE 2812



FIRE TESTED
FD-20/30/60/90/120
MINUTES



TECHNICAL DATA

ITEM CODE	SIZE	BACKSET	CASE SIZE	PCS. IN INNER	PCS. IN OUTER	PCS. IN PALLET
LAL3020	45X85	45	70X170	1	10	1080
LAL3021	50X85	50	75X170	1	10	1080
LAL3022	55X85	55	80X170	1	10	1080
LAL3023	60X85	60	85X170	1	10	1080

BSEN : 12209:2003 2 M 4 1 0 F - B 0 1 0

FEATURES:-

- Easily reversible mechanism by moving Snib on body up, turning live bolt as suitable and pushing it back.
- Follower is suitable for 8mm square spindle.
- Strike Plate & Face Plate Stainless Steel.
- Brass Live Bolt, Brass Follower.
- Available with bolt through provision for 38 to 40 mm bolt through centre.
- Live Bolt Tested for 200,000 Cycles
- Compatible with LAA1235, LAA1240, LAA1245 Rebate Set.

Finish Available : SATIN, POLISHED

Also Available In Radius Corner

(LAL3056,LAL3057,LAL3058,LAL3059)

CE EURO PROFILE LATCH ONLY IN LOCK BODY (85MM CENTRE)



12209:2003



1634-1



CF 5531



CE 2812



FIRE TESTED
FD-20/30/60/90/120
MINUTES



TECHNICAL DATA

ITEM CODE	SIZE	BACKSET	CASE SIZE	PCS. IN INNER	PCS. IN OUTER	PCS. IN PALLET
LAL3140	45X85	45	70X170	1	10	1080
LAL3141	50X85	50	75X170	1	10	1080
LAL3142	55X85	55	80X170	1	10	1080
LAL3143	60X85	60	85X170	1	10	1080

BSEN : 12209:2003 2 M 4 1 0 F - B 0 1 0

FEATURES:-

- Easily reversible mechanism by moving Snib on body up, turning live bolt as suitable and pushing it back.
- Follower is suitable for 8mm square spindle.
- Strike Plate & Face Plate Stainless Steel.
- Zinc Live Bolt, Zinc Follower.
- Available with bolt through provision for 38 to 40 mm bolt through centre.
- Live Bolt Tested for 200,000 Cycles
- Compatible with LAA1235, LAA1240, LAA1245 Rebate Set.

Finish Available : SATIN, POLISHED

Also Available In Radius Corner

(LAL3176,LAL3179,LAL3180,LAL3181)

* Note : All Dimensions are in mm.



CE EURO PROFILE DEAD BOLT ONLY IN LOCK BODY (85MM CENTRE)



12209:2003



1634-1



CF 5531



CE 2812



FIRE TESTED
FD-20/30/60/90/120
MINUTES



TECHNICAL DATA

ITEM CODE	SIZE	BACKSET	CASE SIZE	PCS. IN INNER	PCS. IN OUTER	PCS. IN PALLET
LAL3032	45X85	45	70X170	1	10	1080
LAL3033	50X85	50	75X170	1	10	1080
LAL3034	55X85	55	80X170	1	10	1080
LAL3035	60X85	60	85X170	1	10	1080

BSEN : 12209:2003 **2 M 4 1 0 F 2 B C 0 0**

FEATURES:-

- Strike Plate & Face Plate Stainless Steel.
- Brass Dead Bolt.
- Available with bolt through provision for 38 to 40 mm bolt through centre.
- Dead Bolt tested for 50,000 Cycles.
- Compatible with LAA1235, LAA1240, LAA1245 Rebate Set.

Finish Available : SATIN, POLISHED

Also Available In Radius Corner
(LAL3068,LAL3069,LAL3070,LAL3071)

CE EURO PROFILE DEAD BOLT ONLY IN LOCK BODY (85MM CENTRE)



12209:2003



1634-1



CF 5531



CE 2812



FIRE TESTED
FD-20/30/60/90/120
MINUTES



TECHNICAL DATA

ITEM CODE	SIZE	BACKSET	CASE SIZE	PCS. IN INNER	PCS. IN OUTER	PCS. IN PALLET
LAL3152	45X85	45	70X170	1	10	1080
LAL3153	50X85	50	75X170	1	10	1080
LAL3154	55X85	55	80X170	1	10	1080
LAL3155	60X85	60	85X170	1	10	1080

BSEN : 12209:2003 **2 M 4 1 0 F 2 B C 0 0**

FEATURES:-

- Strike Plate & Face Plate Stainless Steel.
- Zinc Dead Bolt.
- Available with bolt through provision for 38 to 40 mm bolt through centre.
- Dead Bolt tested for 50,000 Cycles.
- Compatible with LAA1235, LAA1240, LAA1245 Rebate Set.

Finish Available : SATIN, POLISHED

Also Available In Radius Corner
(LAL3190,LAL3191,LAL3192,LAL3193)

* Note : All Dimensions are in mm.

EURO PROFILE CYLINDER 4 BULLET LOCK BODY



12209:2003



1634-1



CF 5531



CE 2812



FIRE TESTED
FD-20/30/60/90/120
MINUTES



TECHNICAL DATA

ITEM CODE	SIZE	BACKSET	CASE SIZE	PCS. IN INNER	PCS. IN OUTER	PCS. IN PALLET
LAL3508	45X85	45	70X170	1	10	1080
LAL3509	50X85	50	75X170	1	10	1080
LAL3510	55X85	55	80X170	1	10	1080
LAL3511	60X85	60	85X170	1	10	1080

BSEN : 12209:2003 2 M 4 1 O F 2 B C 1 O

FEATURES:-

- Easily reversible mechanism by moving Snib on body up, turning live bolt as suitable and pushing it back.
- Follower is suitable for 8mm square spindle.
- Strike Plate & Face Plate Stainless Steel.
- Brass Live Bolt, 4 Hardened Steel Bullet Pins, Brass Follower.
- Available with bolt through provision for 38 to 42 mm bolt through centre.
- Live Bolt Tested for 200,000 Cycles & Dead Bolt for 50,000 Cycles.
- Operation: Deadbolt operated by Euro Cylinders.

Finish Available: SS / SATIN / POLISHED

Also Available In Radius Corner
(LAL3532, LAL3533, LAL3534, LAL3535)

EURO PROFILE CYLINDER 4 BULLET LOCK BODY



12209:2003



1634-1



CF 5531



CE 2812



FIRE TESTED
FD-20/30/60/90/120
MINUTES



TECHNICAL DATA

ITEM CODE	SIZE	BACKSET	CASE SIZE	PCS. IN INNER	PCS. IN OUTER	PCS. IN PALLET
LAL3522	55X85	55	70X170	1	10	1080
LAL3523	60X85	60	75X170	1	10	1080

BSEN : 12209:2003 2 M 4 1 O F 2 B C 1 O

FEATURES:-

- Easily reversible mechanism by moving Snib on body up, turning live bolt as suitable and pushing it back.
- Follower is suitable for 8mm square spindle.
- Strike Plate & Face Plate Stainless Steel.
- 4 Hardened Steel Bullet Pins, Brass Follower.
- Available with bolt through provision for 38 to 42 mm bolt through centre.
- Dead Bolt for 50,000 Cycles.
- Operation: Deadbolt operated by Euro Cylinders.

Finish Available: SS / SATIN / POLISHED

Also Available In Radius Corner
(LAL3546, LAL3547)

* Note : All Dimensions are in mm.



EURO PROFILE CYLINDER TRI PIN LOCK BODY



12209:2003



1634-1



CF 5531



CE 2812



FIRE TESTED
FD-20/30/60/90/120
MINUTES



TECHNICAL DATA

ITEM CODE	SIZE	BACKSET	CASE SIZE	PCS. IN INNER	PCS. IN OUTER	PCS. IN PALLET
LAL3556	45X85	45	70x170	1	10	1080
LAL3557	50X85	50	75x170	1	10	1080
LAL3558	55X85	55	80x170	1	10	1080
LAL3559	60X85	60	85x170	1	10	1080

BSEN : 12209:2003 **2 M 4 1 0 F 2 B C 1 0**

FEATURES:-

- Easily reversible mechanism by moving Snib on body up, turning live bolt as suitable and pushing it back.
- Follower is suitable for 8mm square spindle.
- Strike Plate & Face Plate Stainless Steel.
- Brass Live Bolt, Brass Tripin deadbolt, Brass Follower.
- Available with bolt through provision for 38 to 42 mm bolt through centre.
- Live Bolt Tested for 200,000 Cycles & Dead Bolt for 50,000 Cycles.
- Operation: Deadbolt operated by Euro Cylinders.

Finish Available: SS / SATIN / POLISHED

Also Available in Radius Corner

LAL 3576, LAL 3577, LAL 3578, LAL3579

EURO PROFILE CYLINDER TRI PIN LOCK BODY



12209:2003



1634-1



CF 5531



CE 2812



FIRE TESTED
FD-20/30/60/90/120
MINUTES



TECHNICAL DATA

ITEM CODE	SIZE	BACKSET	CASE SIZE	PCS. IN INNER	PCS. IN OUTER	PCS. IN PALLET
LAL3568	45X85	45	70x170	1	10	1080
LAL3569	50X85	50	75x170	1	10	1080
LAL3570	55X85	55	80x170	1	10	1080
LAL3571	60X85	60	85x170	1	10	1080

BSEN : 12209:2003 **2 M 4 1 0 F 2 B C 0 0**

FEATURES:-

- Easily reversible mechanism by moving Snib on body up, turning live bolt as suitable and pushing it back.
- Follower is suitable for 8mm square spindle.
- Strike Plate & Face Plate Stainless Steel.
- Brass Live Bolt, Brass Tripin deadbolt, Brass Follower.
- Available with bolt through provision for 38 to 42 mm bolt through centre.
- Live Bolt Tested for 200,000 Cycles & Dead Bolt for 50,000 Cycles.
- Operation: Deadbolt operated by Euro Cylinders.

Finish Available: SS / SATIN / POLISHED

* Note : All Dimensions are in mm.



EURO PROFILE CYLINDER 2 BULLET + BOLT LOCK BODY



12209:2003



1634-1



CF 5531



CE 2812



FIRE TESTED
FD-20/30/60/90/120
MINUTES



TECHNICAL DATA

ITEM CODE	SIZE	BACKSET	CASE SIZE	PCS. IN INNER	PCS. IN OUTER	PCS. IN PALLET
LAL3605	50X85	50	75X170	1	10	1080
LAL3606	55X85	55	80X170	1	10	1080
LAL3607	60X85	60	85X170	1	10	1080

BSEN : 12209:2003 2 M 4 1 O F 2 B C 1 O

FEATURES:-

- Easily reversible mechanism by moving Snib on body up, turning live bolt as suitable and pushing it back.
- Follower is suitable for 8mm square spindle.
- Strike Plate & Face Plate Stainless Steel.
- Brass Live Bolt, Brass Deadbolt with Two Hardened Steel Bullets, Brass Follower.
- Available with bolt through provision for 38 to 42 mm bolt through centre.
- Live Bolt Tested for 200,000 Cycles & Dead Bolt for 50,000 Cycles.
- Operation: Deadbolt operated by Euro Cylinders.

Finish Available: SS / SATIN / POLISHED

EURO PROFILE CYLINDER 2 BULLET + DEAD LOCK BODY



12209:2003



1634-1



CF 5531



CE 2812



FIRE TESTED
FD-20/30/60/90/120
MINUTES



TECHNICAL DATA

ITEM CODE	SIZE	BACKSET	CASE SIZE	PCS. IN INNER	PCS. IN OUTER	PCS. IN PALLET
LAL3617	50X85	50	75X170	1	10	1080
LAL3618	55X85	55	80X170	1	10	1080
LAL3619	60X85	60	85X170	1	10	1080

BSEN : 12209:2003 2 M 4 1 O F 2 B C 0 O

FEATURES:-

- Follower is suitable for 8mm square spindle.
- Strike Plate & Face Plate Stainless Steel.
- Brass Deadbolt with two hardened steel bullet, Brass Follower
- Available with bolt through provision for 38 to 42 mm bolt through centre.
- Dead Bolt for 50,000 Cycles.
- Operation: Deadbolt operated by Euro Cylinders.

Finish Available: SS / SATIN / POLISHED

Also Available In Radius Corner
LAL 3629, LAL 3630, LAL 3631

* Note : All Dimensions are in mm.



NARROW SASH LOCK



TECHNICAL DATA

ITEM CODE	SIZE	BACKSET	CASE SIZE	PCS. IN INNER	PCS. IN OUTER	PCS. IN PALLET
LAL5581	20x85	20	174x36	1	10	1080
LAL5582	25x85	25	174x41	1	10	1080
LAL5583	30x85	30	174x46	1	10	1080
LAL5584	35x85	35	174x52	1	10	1080

FEATURES:-

- Easily reversible mechanism by moving Snib on body up, turning live bolt as suitable and pushing it back.
- Follower is suitable for 8mm square spindle.
- Strike Plate & Face Plate Stainless Steel.
- Brass Live Bolt, Brass Deadbolt & Brass Follower
- Available with bolt through provision for 38 to 42 mm bolt through centre.
- Live Bolt Tested for 200,000 Cycles & Dead Bolt for 50,000 Cycles.
- Operation: Deadbolt operated by Euro Cylinders.

Finish Available: SS / SATIN / POLISHED

NARROW DEAD LOCK



TECHNICAL DATA

ITEM CODE	SIZE	BACKSET	CASE SIZE	PCS. IN INNER	PCS. IN OUTER	PCS. IN PALLET
LAL5585	20x85	20	174x36	1	10	1080
LAL5586	25x85	25	174x41	1	10	1080
LAL5587	30x85	30	174x46	1	10	1080
LAL5588	35x85	35	174x52	1	10	1080

FEATURES:-

- Follower is suitable for 8mm square spindle.
- Strike Plate & Face Plate Stainless Steel.
- Brass Deadbolt, Brass Follower.
- Available with bolt through provision for 38 to 42 mm bolt through centre.
- Dead Bolt for 50,000 Cycles.
- Operation: Deadbolt operated by Euro Cylinders.

Finish Available: SS / SATIN / POLISHED

* Note : All Dimensions are in mm.



NARROW BATHROOM LOCK



TECHNICAL DATA

ITEM CODE	SIZE	BACKSET	CASE SIZE	PCS. IN INNER	PCS. IN OUTER	PCS. IN PALLET
LAL5590	20X85	20	174x36	1	10	1080
LAL5591	25X85	25	174x41	1	10	1080
LAL5592	30X85	30	174x46	1	10	1080
LAL5593	35X85	35	174x52	1	10	1080

FEATURES:-

- Easily reversible mechanism by moving Snib on body up, turning live bolt as suitable and pushing it back.
- Follower is suitable for 8mm square spindle.
- Strike Plate & Face Plate Stainless Steel.
- Brass Live Bolt, Brass Follower.
- Available with bolt through provision for 38 to 42 mm bolt through centre.
- Live Bolt Tested for 200,000 Cycles

Finish Available: SS / SATIN / POLISHED

NARROW LATCH BODY ONLY



TECHNICAL DATA

ITEM CODE	SIZE	BACKSET	CASE SIZE	PCS. IN INNER	PCS. IN OUTER	PCS. IN PALLET
LAL5597	20X85	20	174x36	1	10	1080
LAL5598	25X85	25	174x41	1	10	1080
LAL5599	30X85	30	174x46	1	10	1080
LAL5600	35X85	35	174x52	1	10	1080

FEATURES:-

- Easily reversible mechanism by moving Snib on body up, turning live bolt as suitable and pushing it back.
- Follower is suitable for 8mm square spindle.
- Strike Plate & Face Plate Stainless Steel.
- Brass Live Bolt, Brass Follower.
- Available with bolt through provision for 38 to 42 mm bolt through centre.
- Live Bolt Tested for 200,000 Cycles & Dead Bolt for 50,000 Cycles.

Finish Available: SS / SATIN / POLISHED

* Note : All Dimensions are in mm.



EUROPEAN EURO PROFILE CYLINDER LOCK CASE BODY



TECHNICAL DATA

ITEM CODE	SIZE	BACKSET	CASE SIZE	CENTRE DISTANCE	PCS. IN INNER	PCS. IN OUTER	PCS. IN PALLET
LAL5270	55X72	55	145X81	72	1	10	1080

FEATURES:-

- Easily reversible mechanism by pushing and turning live bolt suitable for inside / outward opening door.
- Follower is suitable for 8mm square spindle.
- Zinc Live Bolt, MS Dead Bolt, Zinc Follower.
- Strike Plate & Face Plate Mild Steel.
- Live Bolt Tested for 200,000 Cycles & Dead Bolt for 50,000 Cycles.
- Available with bolt through provision for 38mm bolt through centre.
- Operation : Live Bolt Operated by Lever Handle & Deadbolt operated by Euro Cylinders.
- Available with Nylon Live Bolt, Follower and MS Dead Bolt as LAL 5285.
- Available with Nylon Live Bolt, Follower and Nylon Dead Bolt as LAL 5300.

Finish Available : Silver, EB, CP

EUROPEAN KEY LOCK BODY



TECHNICAL DATA

ITEM CODE	SIZE	BACKSET	CASE SIZE	CENTRE DISTANCE	PCS. IN INNER	PCS. IN OUTER	PCS. IN PALLET
LAL5275	55X72	55	145X81	72	1	10	1080

FEATURES:-

- Over 12 Key differs.
- Easily reversible mechanism by pushing and turning live bolt suitable for inside / outward opening door.
- Available with bolt through provision for 38 mm bolt through centre.
- Follower is suitable for 8mm square spindle.
- Zinc Live Bolt, MS Dead Bolt, Zinc Follower & Zinc Key.
- MS Striker Plate & Face Plate
- Live bolt tested for 200,000 Cycles & Dead Bolt for 50,000 cycles.
- Operation : Latchbolt operated by lever handles, Deadbolt operated by key.
- Available with Nylon Live Bolt, Follower and MS Dead Bolt as LAL 5290.
- Available with Nylon Live Bolt, Follower and Nylon Dead Bolt as LAL 5305.

Finish Available : Silver, EB, CP

* Note : All Dimensions are in mm.



EUROPEAN BATHROOM BODY



TECHNICAL DATA

ITEM CODE	SIZE	BACKSET	CASE SIZE	CENTRE DISTANCE	PCS. IN INNER	PCS. IN OUTER	PCS. IN PALLET
LAL5280	55X72	55	145X81	78	1	10	1080

FEATURES:-

- Easily reversible mechanism by pushing and turning live bolt suitable for inside / outward opening door.
- Follower is suitable for 8mm square spindle.
- Strike Plate & Face Plate Mild Steel.
- Zinc Live Bolt, MS Dead Bolt, Zinc Follower.
- Available with bolt through provision for 38 mm bolt through centre.
- Live Bolt Tested for 200,000 Cycles & Dead Bolt for 50,000 Cycles.
- Operation: Deadbolt operated by 8mm square spindle.
- Available with Nylon Live Bolt, Follower and MS Dead Bolt as LAL 5295.
- Available with Nylon Live Bolt, Follower and Nylon Dead Bolt as LAL 5310.

Finish Available : Silver, EB, CP

REBATE SET FOR DIN LOCKS



TECHNICAL DATA

ITEM CODE	SIZE	LENGTH	WIDTH	HEIGHT	PCS. IN INNER	PCS. IN OUTER
LAA1235	13mm	273	28	13	10	100
LAA1240	19mm	273	28	19	10	100
LAA1245	23mm	273	28	25	10	100

FEATURES:-

- Zinc Cast body.
- Suitable for all DIN Locks mentioned except European Locks and Escape Lock.

Finish Available : NP, EB

* Note : All Dimensions are in mm.

CE ARCHITECTURAL EURO PROFILE SASH LOCK CASE (FD-30/60)



TECHNICAL DATA

ITEM CODE	SIZE	BACKSET	CASE SIZE	CENTRE DISTANCE	PCS. IN INNER	PCS. IN OUTER	PCS. IN PALLET
LAL5009	2.5"	45	66X110	47.5	1	10	1710
LAL5010	3"	57	78X110	47.5	1	10	1600

BSEN : 12209:2003 **2 M 4 1 0 F 2 B A 1 0**

FEATURES:-

- Easily reversible mechanism by turning live bolt as suitable for inward / outward opening door & screwing main face plate.
- Follower is suitable for 8mm square spindle.
- Brass Live Bolt, Brass Dead Bolt, Brass Follower.
- Box Strike Plate.
- Live bolt tested for 200,000 Cycles & Dead Bolt for 50,000 cycles.
- Available with bolt through provision for 36 to 38mm bolt through centre.
- Operation : Live Bolt Operated by Lever Handle & Deadbolt operated by Euro Profile Cylinders.
- Compatible with LAA1233, LAA1238, LAA1243 Rebate Set.

Finish Available : EB, NP

Also Available In Radius Corner (LAL5011-2.5", LAL5012-3")

CE ARCHITECTURAL EURO PROFILE DEAD LOCK CASE (FD-60)



TECHNICAL DATA

ITEM CODE	SIZE	BACKSET	CASE SIZE	PCS. IN INNER	PCS. IN OUTER	PCS. IN PALLET
LAL5033	2.5"	45	66X80	1	10	2160
LAL5034	3"	57	78X80	1	10	1860

BSEN : 12209:2003 **2 M 4 1 0 F 2 B A 0 0**

FEATURES:-

- Brass Dead Bolt.
- Box Strike Plate.
- Dead Bolt tested for 50,000 Cycles.
- Operation : Deadbolt operated by Euro Profile Cylinders.
- Compatible with LAA1234, LAA1239, LAA1244 Rebate Set.

Finish Available : EB, NP

Also Available In Radius Corner (LAL5035-2.5", LAL5036-3")

* Note : All Dimensions are in mm.

CE ARCHITECTURAL OVAL PROFILE SASH LOCK CASE (FD-60)



12209:2003



1634-1



CF 5531



CE 2812



FIRE TESTED
FD-20/30/60/90/120
MINUTES



TECHNICAL DATA

ITEM CODE	SIZE	BACKSET	CASE SIZE	CENTRE DISTANCE	PCS. IN INNER	PCS. IN OUTER	PCS. IN PALLET
LAL5059	2.5"	45	66X110	48.5	1	10	1710
LAL5060	3"	57	78X110	48.5	1	10	1600

BSEN : 12209:2003 **2 M 4 1 0 F 2 B A 1 0**

FEATURES:-

- Easily reversible mechanism by turning live bolt as suitable for inward / outward opening door & screwing main face plate.
- Available with bolt through provision for 36 to 38mm bolt through center.
- Follower is suitable for 8mm square spindle.
- Brass Dead Bolt.
- Box Strike Plate.
- Live Bolt tested for 200,00 Cycles & Dead Bolt tested for 50,000 Cycles.
- Operation : Deadbolt operated by Oval Profile Cylinders
- Compatible with LAA1233, LAA1238, LAA1243 Rebate Set.

Finish Available : EB, NP

Also Available In Radius Corner (LAL5061-2.5", LAL5062-3")

CE ARCHITECTURAL OVAL PROFILE DEAD LOCK CASE (FD-60)



12209:2003



1634-1



CF 5531



CE 2812



FIRE TESTED
FD-20/30/60/90/120
MINUTES



TECHNICAL DATA

ITEM CODE	SIZE	BACKSET	CASE SIZE	PCS. IN INNER	PCS. IN OUTER	PCS. IN PALLET
LAL5083	2.5"	45	66X80	1	10	2160
LAL5084	3"	57	78X80	1	10	1860

BSEN : 12209:2003 **2 M 4 1 0 F 2 B A 0 0**

FEATURES:-

- Brass Dead Bolt.
- Box Strike Plate.
- Dead Bolt tested for 50,000 Cycles.
- Operation : Deadbolt operated by Oval Cylinders.
- Compatible with LAA1234, LAA1239, LAA1244 Rebate Set.

Also Available In Radius Corner (LAL5085-2.5", LAL5086-3")

* Note : All Dimensions are in mm.

ARCHITECTURAL EURO PROFILE SASH LOCK CASE



TECHNICAL DATA

ITEM CODE	SIZE	BACKSET	CASE SIZE	PCS. IN INNER	PCS. IN OUTER	PCS. IN PALLET
LAL5001	2.5"	45	66X110	1	10	1710
LAL5002	3"	57	78X110	1	10	1600

FEATURES:-

- Easily reversible mechanism by turning live bolt as suitable for inward / outward opening door & screwing main face plate.
- Follower is suitable for 8mm square spindle.
- Brass Dead Bolt, Brass Follower.
- Box Striker Plate.
- Live bolt tested for 100,000 Cycles & Dead Bolt for 50,000 cycles.
- Available with bolt through provision for 36 to 38mm bolt through centre.
- Operation : Live Bolt Operated by Lever Handle & Deadbolt operated by Euro Profile Cylinders.
- Compatible with LAA1233, LAA1238, LAA1243 Rebate Set.

Finish Available : EB, NP

Also Available In Radius Corner (LAL5003-2.5" & LAL5004-3")

ARCHITECTURAL EURO PROFILE DEAD LOCK CASE



TECHNICAL DATA

ITEM CODE	SIZE	BACKSET	CASE SIZE	PCS. IN INNER	PCS. IN OUTER	PCS. IN PALLET
LAL5026	2.5"	45	66X80	1	10	2160
LAL5027	3"	57	78X80	1	10	1860

FEATURES:-

- Follower is suitable for 8mm square spindle.
- Brass Dead Bolt.
- Box Striker Plate.
- Dead Bolt tested for 50,000 Cycles.
- Operation : Deadbolt operated by Euro Profile Cylinders.
- Compatible with LAA1234, LAA1239, LAA1244 Rebate Set.

Finish Available : EB, NP

Also Available In Radius Corner (LAL5028-2.5" & LAL5029-3")

* Note : All Dimensions are in mm.

CE EURO PROFILE SASH LOCK BODY



TECHNICAL DATA

ITEM CODE	SIZE	BACKSET	CASE SIZE	CENTRE DISTANCE	PCS. IN INNER	PCS. IN OUTER	PCS. IN PALLET
LAL1727	2.5"	45	65X102	47.5	10	40	1560
LAL1728	3"	58	78X102	47.5	10	40	1120

BSEN : 12209:2003

1	M	4	1	O	F	2	B	A	1	O
---	---	---	---	---	---	---	---	---	---	---

FEATURES:-

- Easily reversible mechanism by turning live bolt as suitable for inward / outward opening door & screwing main face plate.
- Follower is suitable for 8mm square spindle.
- Zinc Live Bolt, Zinc Dead Bolt, Zinc Follower.
- MS Striker Plate & Face Plate.
- Live bolt tested for 200,000 Cycles & Dead Bolt for 50,000 cycles.
- Available with bolt through provision for 36 to 38mm bolt through centre.
- Operation : Live Bolt Operated by Lever Handle & Deadbolt operated by Euro Profile Cylinders.
- Compatible with LAA0001, LAA1231, LAA1236, LAA1241 Rebate Set.

Finish Available : EB, NP

Also Available In Radius Corner (LAL1731-2.5" & LAL1732-3")

CE EURO PROFILE DEAD LOCK BODY



TECHNICAL DATA

ITEM CODE	SIZE	BACKSET	CASE SIZE	PCS. IN INNER	PCS. IN OUTER	PCS. IN PALLET
LAL1729	2.5"	45	65X70	10	40	1710
LAL1730	3"	58	78X70	10	40	1600

BSEN : 12209:2003

1	M	4	1	O	F	2	B	A	0	0
---	---	---	---	---	---	---	---	---	---	---

FEATURES:-

- Zinc Dead Bolt.
- MS Striker Plate & Face Plate.
- Dead Bolt tested for 50,000 Cycles.
- Operation : Deadbolt operated by Euro Profile Cylinders.
- Cylinder not included, please order separately.
- Compatible with LAA0020, LAA1233, LAA1237, LAA1242 Rebate Set.

Finish Available : EB, NP

Also Available In Radius Corner (LAL1733-2.5" & LAL1734-3")

* Note : All Dimensions are in mm.

EURO PROFILE SASH LOCK BODY



TECHNICAL DATA

ITEM CODE	SIZE	BACKSET	CASE SIZE	CENTRE DISTANCE	PCS. IN INNER	PCS. IN OUTER	PCS. IN PALLET
LAL5551	2"	35	108X52	47.5	10	40	1560

FEATURES:-

- Easily reversible mechanism by turning live bolt as suitable for inward / outward opening door.
- Follower is suitable for 8mm square spindle.
- Zinc Live Bolt, Zinc Dead Bolt, Zinc Follower.
- MS Striker Plate & Face Plate.
- Operation : Live Bolt Operated by Lever Handle & Deadbolt operated by Euro Profile Cylinders.

Finish Available : EB, NP

Also Available In Radius Corner (LAL5552)

EURO PROFILE DEAD LOCK BODY



TECHNICAL DATA

ITEM CODE	SIZE	BACKSET	CASE SIZE	PCS. IN INNER	PCS. IN OUTER	PCS. IN PALLET
LAL5553	2"	35	108X52	10	40	1560

FEATURES:-

- Follower is suitable for 8mm square spindle.
- Zinc Dead Bolt, Zinc Follower.
- MS Striker Plate & Face Plate.
- Operation : Deadbolt operated by Euro Profile Cylinders.

Finish Available : EB, NP

Also Available In Radius Corner (LAL5554)

* Note : All Dimensions are in mm.

EURO PROFILE LATCH LOCK BODY



TECHNICAL DATA

ITEM CODE	SIZE	BACKSET	CASE SIZE	CENTRE DISTANCE	PCS. IN INNER	PCS. IN OUTER	PCS. IN PALLET
LAL5555	2"	35	108X52	47.5	10	40	1560

FEATURES:-

- Easily reversible mechanism by turning live bolt as suitable for inward / outward opening door.
- Follower is suitable for 8mm square spindle.
- Zinc Live Bolt, Zinc Follower.
- MS Striker Plate & Face Plate.
- Operation : Live Bolt Operated by Lever Handle.

Finish Available : EB, NP

Also Available In Radius Corner (LAL5556)

SLIDING DOOR DEAD LOCK NARROW BODY



TECHNICAL DATA

ITEM CODE	SIZE	BACKSET	CASE SIZE	PCS. IN INNER	PCS. IN OUTER	PCS. IN PALLET
LLDL0103	2"	40	54x100	1	10	1620

FEATURES:-

- Complete Stainless Steel lock
- Available with bolt through provision for 38 to 40 mm bolt through centre.
- Dead Bolt tested for 50,000 Cycles.

Finish Available: SATIN / POLISHED

* Note : All Dimensions are in mm.

BS 3621 5 LEVER SASH LOCK (UNPICKABLE)



TECHNICAL DATA

ITEM CODE	SIZE	BACKSET	CASE SIZE	CENTRE DISTANCE	PCS. IN INNER	PCS. IN OUTER	PCS. IN PALLET
LAL6008	2.5"	45	66X110	57	1	10	1620
LAL6009	3"	57	78X110	57	1	10	1190

BSEN : 12209:2003	3	M	8	1	O	G	7	K	D	1	B
BS 3621 : 2007	2	H	4	O	O	F	7	K	D	2	B

FEATURES:-

- Over 1000 Key differs.
- Easy reversible mechanism by turning live bolt as suitable for inward / outward opening door & screwing main face plate.
- Available with bolt through provision for 32 to 40 mm bolt through centre.
- Follower is suitable for 8mm square spindle.
- Brass Live Bolt, SS Dead Bolt, Brass Follower & Brass Key.
- Box Strike Plate.
- Live Bolt Tested for 200,000 Cycles & Dead Bolt for 50,000 Cycles.
- Operation : Latchbolt operated by lever handles, Deadbolt operated by key.

Finish Available : SATIN, POLISHED, STAINLESS STEEL

iso Available In Radius Corner (LAL 6012 LAL 6013)

BS 3621 5 LEVER DEAD LOCK (UNPICKABLE)



TECHNICAL DATA

ITEM CODE	SIZE	BACKSET	CASE SIZE	PCS. IN INNER	PCS. IN OUTER	PCS. IN PALLET
LAL6010	2.5"	45	66X80	1	10	1710
LAL6011	3"	57	78X80	1	10	1600

BSEN : 12209:2003	3	M	8	1	O	G	7	K	D	0	B
BS 3621 : 2007	2	H	4	O	O	F	7	K	D	0	B

FEATURES:-

- Over 1000 Key differs.
- SS Dead Bolt, & Brass Key.
- Box Strike Plate.
- Dead Bolt tested for 50,000 Cycles.
- Operation : Deadbolt operated by key.

Finish Available : SATIN, POLISHED, STAINLESS STEEL

Also Available In Radius Corner (LAL6014, LAL6015)

* Note : All Dimensions are in mm.

BS 3621 5 LEVER SASH LOCK



TECHNICAL DATA

ITEM CODE	SIZE	BACKSET	CASE SIZE	CENTRE DISTANCE	PCS. IN INNER	PCS. IN OUTER	PCS. IN PALLET
LAL5503	2.5"	45	67X110	57	1	10	1620
LAL5504	3"	57	79X110	57	1	10	1190

BSEN : 12209:2003	3	M	8	1	O	G	7	K	D	1	B
BS 3621 : 2007	2	H	4	0	0	F	7	K	D	2	B

FEATURES:-

- Over 1000 Key differs.
- Easily reversible mechanism by turning live bolt as suitable for inward / outward opening door & screwing main face plate.
- Available with bolt through provision for 32 to 40 mm bolt through centre.
- Follower is suitable for 8mm square spindle.
- Brass Live Bolt, SS Dead Bolt, Brass Follower & Brass Key.
- Box Strike Plate.
- Live Bolt Tested for 200,000 Cycles & Dead Bolt for 50,000 Cycles.
- Operation : Latchbolt operated by lever handles, Deadbolt operated by key.

Finish Available : SATIN, POLISHED, STAINLESS STEEL

BS 3621 5 LEVER DEAD LOCK



TECHNICAL DATA

ITEM CODE	SIZE	BACKSET	CASE SIZE	PCS. IN INNER	PCS. IN OUTER	PCS. IN PALLET
LAL5505	2.5"	45	67X80	1	10	1710
LAL5506	3"	57	79X80	1	10	1600

BSEN : 12209:2003	3	M	8	1	O	G	7	K	D	0	B
BS 3621 : 2007	2	H	4	0	0	F	7	K	D	0	B

FEATURES:-

- Over 1000 Key differs.
- SS Dead Bolt, & Brass Key.
- Box Strike Plate.
- Dead Bolt tested for 50,000 Cycles.
- Operation : Deadbolt operated by key.

Finish Available : SATIN, POLISHED, STAINLESS STEEL

* Note : All Dimensions are in mm.

BS 3621 5 LEVER DEAD LOCK (AS 3G110)



TECHNICAL DATA

ITEM CODE	SIZE	BACKSET	CASE SIZE	PCS. IN INNER	PCS. IN OUTER	PCS. IN PALLET
LAL5511	60MM	31	60X123	1	10	1710
LAL5512	73MM	45	74X123	1	10	1600

BSEN : 12209:2003	3	M	8	1	O	G	7	K	D	O	B
BS 3621 : 2007	2	H	4	O	O	F	7	K	D	O	B

FEATURES:-

- Over 1000 Key differs.
- SS Dead Bolt, & Brass Key.
- Box Strike Plate.
- Dead Bolt tested for 50,000 Cycles.
- Operation : Deadbolt operated by key.

Finish Available : SATIN, POLISHED, STAINLESS STEEL
 Also Available In Radius Corner (LAL5513 & LAL5514)
 Retrofit Lock for 3G110

BS 3621 5 LEVER DEAD LOCK (AS 3G114)



TECHNICAL DATA

ITEM CODE	SIZE	BACKSET	CASE SIZE	PCS. IN INNER	PCS. IN OUTER	PCS. IN PALLET
LAL5515	67MM	41	67X77	1	10	1710
LAL5516	80MM	54	80X77	1	10	1600

BSEN : 12209:2003	3	M	8	1	O	G	7	K	D	O	B
BS 3621 : 2007	2	H	4	O	O	F	7	K	D	O	B

FEATURES:-

- Over 1000 Key differs.
- SS Dead Bolt, & Brass Key.
- Box Strike Plate.
- Dead Bolt tested for 50,000 Cycles.
- Operation : Deadbolt operated by key.

Finish Available : SATIN, POLISHED, STAINLESS STEEL
 Also Available In Radius Corner (LAL5517 & LAL5518)

* Note : All Dimensions are in mm.

BS 3621 5 LEVER ROLLER SASH LOCK (AS 3K74)



TECHNICAL DATA

ITEM CODE	SIZE	BACKSET	CASE SIZE	CENTRE DISTANCE	PCS. IN INNER	PCS. IN OUTER	PCS. IN PALLET							
LAL5519	57MM	41	67X108	57	1	10	1620							
LAL5520	80MM	54	80X108	57	1	10	1190							
BSEN : 12209:2003				3	M	8	1	O	G	7	K	D	1	B
BS 3621 : 2007				2	H	4	O	O	F	7	K	D	2	B

FEATURES:-

- Over 1000 Key differs.
- Easily reversible mechanism by turning live bolt as suitable for inward / outward opening door & screwing main face plate.
- Available with bolt through provision for 32 to 40 mm bolt through centre.
- Follower is suitable for 8mm square spindle.
- Brass Live Bolt, SS Dead Bolt, Brass Follower & Brass Key.
- Box Strike Plate.
- Live Bolt Tested for 200,000 Cycles & Dead Bolt for 50,000 Cycles.
- Operation : Latchbolt operated by lever handles, Deadbolt operated by key.

Finish Available : SATIN, POLISHED, STAINLESS STEEL

Also Available In Radius Corner (LAL5521 & LAL5522)

BS 3621 5 LEVER SASH LOCK (AS ERA FORTRESS RETRO)



TECHNICAL DATA

ITEM CODE	SIZE	BACKSET	CASE SIZE	CENTRE DISTANCE	PCS. IN INNER	PCS. IN OUTER	PCS. IN PALLET							
LAL6000	2.5"	45	68X110	57	1	10	1620							
LAL6001	3"	80	81X110	57	1	10	1190							
BSEN : 12209:2003				3	M	8	1	O	G	7	K	D	1	B
BS 3621 : 2007				2	H	4	O	O	F	7	K	D	2	B

FEATURES:-

- Over 1000 Key differs.
- Easily reversible mechanism by turning live bolt as suitable for inward / outward opening door & screwing main face plate.
- Available with bolt through provision for 32 to 40 mm bolt through centre.
- Follower is suitable for 8mm square spindle.
- Brass Live Bolt, SS Dead Bolt, Brass Follower & Brass Key.
- Box Strike Plate.
- Live Bolt Tested for 200,000 Cycles & Dead Bolt for 50,000 Cycles.
- Operation : Latchbolt operated by lever handles, Deadbolt operated by key.

Finish Available : SATIN, POLISHED, STAINLESS STEEL

Also Available In Radius Corner (LAL 6002, LAL 6003)

* Note : All Dimensions are in mm.

BS 3621 5 LEVER DEAD LOCK (AS ERA FORTRESS RETRO)



TECHNICAL DATA

ITEM CODE	SIZE	BACKSET	CASE SIZE	PCS. IN INNER	PCS. IN OUTER	PCS. IN PALLET
LAL6004	2.5"	45	68X89	1	10	1710
LAL6005	3"	58	81X89	1	10	1600

BSEN : 12209:2003

3	M	8	1	O	G	7	K	D	O	B
---	---	---	---	---	---	---	---	---	---	---

 BS 3621 : 2007

2	H	4	O	O	F	7	K	D	O	B
---	---	---	---	---	---	---	---	---	---	---

FEATURES:-

- Over 1000 Key differs.
- SS Dead Bolt, & Brass Key.
- Box Strike Plate.
- Dead Bolt tested for 50,000 Cycles.
- Operation : Deadbolt operated by key.

Finish Available : SATIN, POLISHED, STAINLESS STEEL
 Also Available In Radius Corner (LAL 6006, LAL 6007)

BS 3621 5 LEVER SASH LOCK



TECHNICAL DATA

ITEM CODE	SIZE	BACKSET	CASE SIZE	CENTRE DISTANCE	PCS. IN INNER	PCS. IN OUTER	PCS. IN PALLET
LAL5501	2.5"	45	67X110	57	1	10	1620
LAL5502	3"	57	79X110	57	1	10	1190

BSEN : 12209:2003

3	M	8	1	O	G	7	K	D	1	B
---	---	---	---	---	---	---	---	---	---	---

 BS 3621 : 2007

2	H	4	O	O	F	7	K	D	2	B
---	---	---	---	---	---	---	---	---	---	---

FEATURES:-

- Over 1000 Key differs.
- Easily reversible mechanism by turning live bolt as suitable for inward / outward opening door & screwing main face plate.
- Available with bolt through provision for 32 to 40 mm bolt through centre.
- Follower is suitable for 8mm square spindle.
- Brass Live Bolt, SS Dead Bolt, Brass Follower & Brass Key.
- Box Strike Plate.
- Live Bolt Tested for 200,000 Cycles & Dead Bolt for 50,000 Cycles.
- Operation : Latchbolt operated by lever handles. Deadbolt operated by key.

Finish Available : SATIN, POLISHED, STAINLESS STEEL

* Note : All Dimensions are in mm.

BS 3621 5 LEVER DEAD LOCK



TECHNICAL DATA

ITEM CODE	SIZE	BACKSET	CASE SIZE	PCS. IN INNER	PCS. IN OUTER	PCS. IN PALLET
LAL5507	2.5"	45	67X80	1	10	1710
LAL5508	3"	57	79X80	1	10	1600

BSEN : 12209:2003 **3 M 8 1 O G 7 K D 0 B**
 BS 3621 : 2007 **2 H 4 0 0 F 7 K D 0 B**

FEATURES:-

- Over 1000 Key differs.
- SS Dead Bolt, & Brass Key.
- Box Strike Plate.
- Dead Bolt tested for 50,000 Cycles.
- Operation : Deadbolt operated by key.

Finish Available : SATIN, POLISHED, STAINLESS STEEL

CE 5 LEVER MORTICE SASH LOCK (FD-60)



TECHNICAL DATA

ITEM CODE	SIZE	BACKSET	CASE SIZE	CENTRE DISTANCE	PCS. IN INNER	PCS. IN OUTER	PCS. IN PALLET
LAL1512	2.5"	45	66X110	57	1	10	1710
LAL1513	3"	57	78X110	57	1	10	1600

BSEN : 12209:2003 **2 M 4 1 0 F 3 K D 1 A**

FEATURES:-

- Over 250 Key differs.
- Easily reversible mechanism by turning live bolt as suitable for inward / outward opening door & screwing main face plate.
- Available with bolt through provision for 32 to 40 mm bolt through centre.
- Follower is suitable for 8mm square spindle.
- Brass Live Bolt, Brass Dead Bolt, Brass Follower & Brass Key.
- Box Strike Plate.
- Live bolt tested for 200,000 Cycles & Dead Bolt for 50,000 cycles.
- Operation : Latchbolt operated by lever handles, Deadbolt operated by key.
- Compatible with LAA1233, LAA1238, LAA1243 Rebate Set.

Finish Available : EB, NP

Also Available In Radius Corner (LAL1514-2.5" & LAL1515-3")

* Note : All Dimensions are in mm.

CE 5 LEVER DEAD LOCK



TECHNICAL DATA

ITEM CODE	SIZE	BACKSET	CASE SIZE	PCS. IN INNER	PCS. IN OUTER	PCS. IN PALLET
LAL1544	2.5"	45	66X80	1	10	2160
LAL1545	3"	57	78X80	1	10	1860

BSEN : 12209:2003 **2 M 4 1 O F 3 K D O A**

FEATURES:-

- Over 250 Key differs.
- Follower is suitable for 8mm square spindle.
- Brass Dead Bolt & Brass Key.
- Box Strike Plate.
- Dead Bolt tested for 50,000 Cycles.
- Operation : Deadbolt operated by key.
- Compatible with LAA1234, LAA1239, LAA1244 Rebate Set.

Finish Available: EB, NP

Also Available In Radius Corner (LAL1546-2.5" & LAL1547-3")

5 LEVER MORTICE SASH LOCK



TECHNICAL DATA

ITEM CODE	SIZE	BACKSET	CASE SIZE	CENTRE DISTANCE	PCS. IN INNER	PCS. IN OUTER	PCS. IN PALLET
LAL1500	2.5"	45	66X110	57	1	10	1710
LAL1501	3"	57	78X110	57	1	10	1600

FEATURES:-

- Over 250 Key differs.
- Easily reversible mechanism by turning live bolt as suitable for inward / outward opening door & screwing main face plate.
- Available with bolt thru provision for 32 to 40mm bolt through centre.
- Follower is suitable for 8mm square spindle.
- Brass Live Bolt, Brass Dead bolt Brass Follower & Brass Key.
- Box Striker Plate.
- Live bolt tested for 100,000 Cycles & Dead Bolt for 50,000 cycles.
- Operation : Latchbolt operated by lever handles. Deadbolt operated by key.
- Compatible with LAA1233, LAA1238, LAA1243 Rebate Set.

Finish Available : EB, NP

Also Available In Radius Corner (LAL1502-2.5" & LAL1503-3")

* Note : All Dimensions are in mm.

5 LEVER DEAD LOCK



TECHNICAL DATA

ITEM CODE	SIZE	BACKSET	CASE SIZE	PCS. IN INNER	PCS. IN OUTER	PCS. IN PALLET
LAL1520	2.5"	45	66X80	1	10	2160
LAL1521	3"	57	78X80	1	10	1860

FEATURES:-

- Over 250 Key differs.
- Follower is suitable for 8mm square spindle.
- Brass Dead Bolt & Brass Key.
- Box Striker Plate.
- Live bolt tested for 100,000 Cycles.
- Operation : Deadbolt operated by key.
- Compatible with LAA1234, LAA1239, LAA1244 Rebate Set.

Finish Available : EB, NP

Also Available In Radius Corner (LAL1522-2.5" & LAL1523-3")

5 LEVER MORTICE SASH LOCK



TECHNICAL DATA

ITEM CODE	SIZE	BACKSET	CASE SIZE	CENTRE DISTANCE	PCS. IN INNER	PCS. IN OUTER	PCS. IN PALLET
LAL5545	2"	35	52X108	57	1	10	1710

FEATURES:-

- Over 250 Key differs.
- Easily reversible mechanism by turning live bolt as suitable for inward / outward opening door & screwing main face plate.
- Available with bolt thru provision for 32 to 40mm bolt through centre.
- Follower is suitable for 8mm square spindle.
- Brass Live Bolt, Brass Dead bolt Brass Follower & Brass Key.
- Box Striker Plate.
- Live bolt tested for 100,000 Cycles & Dead Bolt for 50,000 cycles.
- Operation : Latchbolt operated by lever handles, Deadbolt operated by key.
- Compatible with LAA1233, LAA1238, LAA1243 Rebate Set.

Finish Available : EB, NP

Also Available In Radius Corner (LALA5546)

* Note : All Dimensions are in mm.

5 LEVER DEAD LOCK



TECHNICAL DATA

ITEM CODE	SIZE	BACKSET	CASE SIZE	PCS. IN INNER	PCS. IN OUTER	PCS. IN PALLET
LAL5547	2"	35	52X108	1	10	2160

FEATURES:-

- Over 250 Key differs.
- Follower is suitable for 8mm square spindle.
- Brass Dead Bolt & Brass Key.
- Box Striker Plate.
- Live bolt tested for 100,000 Cycles.
- Operation : Deadbolt operated by key.
- Compatible with LAA1234, LAA1239, LAA1244 Rebate Set.

Finish Available : EB, NP

Also Available in Radius Corner (LAL5548)

* Note : All Dimensions are in mm.

SPARE FOR BS 5 LEVER LOCK



LAA5507
Face Plate / Strike Plate
5 Lever Dead Lock



LAA5501
Face Plate / Strike Plate
5 Lever Sash Lock



LAA1500
5 Lever Lock Blank Key

LONG THROW LOCK



TECHNICAL DATA

	ITEM CODE	SIZE	PCS IN INNER	PCS IN OUTER
BSK	LAL5266	50	1	10
	LAL5268	70	1	10
OSK	LAL5265	50	1	10
	LAL5267	70	1	10

FEATURES:-

- SS 304 Grade Square Bolt.
- MS Body.
- Supplied with fixing.
- Zinc Cylinder.
- Brass Keys.

EURO PROFILE LONG THROW LOCK



TECHNICAL DATA

	ITEM CODE	SIZE	PCS IN INNER	PCS IN OUTER
BSK	LAL5269	100	1	10
OSK	LAL5270	100	1	10

FEATURES:-

- SS 304 Grade Square Bolt.
- MS Body.
- Supplied with fixing.
- Brass Euro Cylinder.
- Brass Keys.

* Note : All Dimensions are in mm.

ARCHITECTURAL 3 LEVER LOCK



TECHNICAL DATA

ITEM CODE	SIZE	BACKSET	CASE SIZE	CENTRE DISTANCE	PCS. IN INNER	PCS. IN OUTER	PCS. IN PALLET
LAL1456	2.5"	45	65X102	57	1	10	2190
LAL1457	3"	58	78X102	57	1	10	1980

BSEN : 12209:2003

2	M	4	1	0	F	3	K	D	1	A
---	---	---	---	---	---	---	---	---	---	---

FEATURES:-

- Over 100 Key differs
- Easily reversible mechanism by turning live bolt as suitable for inward / outward opening door & screwing main face plate.
- Available with bolt through provision for 36 to 38 mm bolt through centre.
- Follower is suitable for 8mm square spindle.
- Zinc Live bolt, Dead bolt & Key
- MS Striker Plate & Face Plate
- Live bolt tested for 200,000 Cycles & Dead Bolt for 50,000 cycles.
- Compatible with LAA1233, LAA1238, LAA1243 Rebate Set.

Finish Available : EB, NP

Also Available in Radius Corner (LAL1458-2.5" & LAL1459-3")

ARCHITECTURAL 3 LEVER DEAD LOCK



TECHNICAL DATA

ITEM CODE	SIZE	BACKSET	CASE SIZE	PCS. IN INNER	PCS. IN OUTER	PCS. IN PALLET
LAL1460	2.5"	45	65X70	1	10	2640
LAL1461	3"	58	78X70	1	10	2070

BSEN : 12209:2003

2	M	4	1	0	F	3	K	D	0	0
---	---	---	---	---	---	---	---	---	---	---

FEATURES:-

- Over 100 Key Differs
- Zinc Dead Bolt & Key
- MS Striker Plate & Face Plate
- Dead Bolt for 50,000 cycles.
- Rebate set available.
- Operation : Deadbolt operated by key.
- Compatible with LAA1234, LAA1239, LAA1244 Rebate Set.

Finish Available : EB, NP

Also Available in Radius Corner (LAL1462-2.5", LAL1463-3")

* Note : All Dimensions are in mm.

CE ARCHITECTURAL BATHROOM LOCK



12209:2003



1634-1



CF 5531



CE 2812



FIRE TESTED
FD-20/30/60
MINUTES



TECHNICAL DATA

ITEM CODE	SIZE	BACKSET	CASE SIZE	CENTRE DISTANCE	PCS. INNER	PCS. OUTER	PCS. IN PALLET
LAL1535	2.5"	45	65X102	57	1	10	2190
LAL1536	3"	58	78X102	57	1	10	1980

BSEN : 12209:2003 **2 M 4 1 0 F - B G 1 0**

FEATURES:-

- Easily reversible mechanism by turning live bolt as suitable for inward / outward opening door & screwing main face plate.
- Available with bolt through provision for 36 to 38 mm bolt through centre.
- Follower is suitable for 8mm square spindle.
- Zinc Live bolt, Dead bolt.
- MS Striker Plate & Face Plate.
- Live bolt tested for 200,000 Cycles & Dead Bolt for 50,000 cycles.
- Compatible with LAA1233, LAA1238, LAA1243 Rebate Set.

Finish Available : EB, NP

CE BATHROOM LOCK (FD-60)



12209:2003



1634-1



CF 5531



CE 2812



FIRE TESTED
FD-20/30/60
MINUTES



TECHNICAL DATA

ITEM CODE	SIZE	BACKSET	CASE SIZE	CENTRE DISTANCE	PCS. INNER	PCS. OUTER	PCS. IN PALLET
LAL1422	2.5"	45	65X102	57	1	10	1980
LAL1423	3"	58	78X102	57	1	10	1770

BSEN : 12209:2003 **1 M 4 1 0 F - B G 1 0**

FEATURES:-

- Easily reversible mechanism by turning live bolt as suitable for inward / outward opening door & screwing main face plate.
- Available with bolt through provision for 36 to 38 mm bolt through centre.
- Follower is suitable for 8mm square spindle.
- Zinc Live bolt, Dead bolt.
- MS Striker Plate & Face Plate.
- Live bolt tested for 200,000 Cycles & Dead Bolt for 50,000 cycles.
- Followers : Latch 8mm for use with sprung lever furniture.
- Dead bolt 5mm for use with bathroom furniture/emergency release.
- Compatible with LAA0001, LAA1231, LAA1236, LAA1241 Rebate Set.

Finish Available : EB, NP

Also Available in Radius Corner (LAL1425-2.5" & LAL1426-3").

* Note : All Dimensions are in mm.

CE 3 LEVER MORTICE SASH LOCK (FD-60)



12209:2003



1634-1



CF 5531



CE 2812



FIRE TESTED
FD-20/30/60
MINUTES



TECHNICAL DATA

ITEM CODE	SIZE	BACKSET	CASE SIZE	CENTRE DISTANCE	PCS. IN INNER	PCS. IN OUTER	PCS. IN PALLET
LAL1449	2"	31	51X102	57	1	10	2280
LAL1450	2.5"	45	65X102	57	1	10	2190
LAL1451	3"	58	78X102	57	1	10	1980

BSEN : 12209:2003 **1 M 4 1 0 F 2 K D 1 A**

FEATURES:-

- Over 100 Key differs.
- Easily reversible mechanism by turning live bolt as suitable for inward / outward opening door & screwing main face plate.
- Available with bolt through provision for 36 to 38 mm bolt through centre.
- Follower is suitable for 8mm square spindle.
- Zinc Live bolt, Dead bolt & Key.
- MS Striker Plate & Face Plate.
- Live bolt tested for 200,000 Cycles & Dead Bolt for 50,000 cycles.
- Compatible with LAA0001, LAA1231, LAA1236, LAA1241 Rebate Set.

Finish Available : EB, NP

Also Available In Radius Corner (LAL1453-2", LAL1454-2.5" & LAL1455-3").

CE 3 LEVER DEAD LOCK (FD-60)



12209:2003



1634-1



CF 5531



CE 2812



FIRE TESTED
FD-20/30/60
MINUTES



TECHNICAL DATA

ITEM CODE	SIZE	BACKSET	CASE SIZE	PCS. IN INNER	PCS. IN OUTER	PCS. IN PALLET
LAL1434	2.5"	45	65X70	1	10	2640
LAL1435	3"	58	78X70	1	10	2070

BSEN : 12209:2003 **1 M 4 1 0 F 2 K D 0 A**

FEATURES:-

- Over 100 Key Differs.
- Zinc Dead Bolt & Key.
- MS Striker Plate & Face Plate.
- Dead Bolt for 50,000 cycles.
- Operation : Deadbolt operated by key.
- Compatible with LAA0020, LAA1233, LAA1237, LAA1242 Rebate Set.

Finish Available : EB, NP

Also Available In Radius Corner (LAL1436-2.5", LAL1437-3")

* Note : All Dimensions are in mm.

3 LEVER MORTICE SASH LOCK



TECHNICAL DATA

ITEM CODE	SIZE	BACKSET	CASE SIZE	CENTRE DISTANCE	PCS. IN INNER	PCS. IN OUTER	PCS. IN PALLET
LAL1398	2"	31	51X102	57	10	40	1560
LAL1400	2.5"	45	65X102	57	10	40	1560
LAL1401	3"	58	78X102	57	10	40	1560
LAL1402	4"	83	103X102	57	10	40	1560

FEATURES:-

- Over 100 Key differs.
- Easily reversible mechanism by turning live bolt as suitable for inward / outward opening door & screwing main face plate.
- Available with bolt through provision for 36 to 38 mm bolt through centre (only 2.5" 3" & 4")
- Follower is suitable for 8mm square spindle.
- Zinc Live bolt, Dead bolt & Key.
- MS Striker Plate & Face Plate.
- Live bolt tested for 100,000 Cycles & Dead Bolt for 50,000 cycles.
- Compatible with LAA0001, LAA1231, LAA1236, LAA1241 Rebate Set.

Finish Available : EB, NP, Matt Black

3 LEVER DEAD LOCK



TECHNICAL DATA

ITEM CODE	SIZE	BACKSET	CASE SIZE	PCS. IN INNER	PCS. IN OUTER	PCS. IN PALLET
LAL1427	2.5"	45	65X70	10	40	2160
LAL1428	3"	58	78X70	10	40	2160

FEATURES:-

- Over 100 Key differs.
- Zinc Dead bolt & Key.
- MS Striker Plate & Face Plate.
- Dead Bolt for 50,000 cycles.
- Compatible with LAA0020, LAA1233, LAA1237, LAA1242 Rebate Set.

Finish Available : EB, NP, Matt Black

Also Available in Radius Corner (LAL1429-2.5", LAL1430-3")

* Note : All Dimensions are in mm.

BATHROOM LOCK



TECHNICAL DATA

ITEM CODE	SIZE	BACKSET	CASE SIZE	CENTRE DISTANCE	PCS. IN INNER	PCS. IN OUTER	PCS. IN PALLET
LAL1410	2.5"	45	65X102	57	10	40	1560
LAL1411	3"	58	78X102	57	10	40	1560

FEATURES:-

- Easily reversible mechanism by turning live bolt as suitable for inward / outward opening door & screwing main face plate.
- Available with bolt through provision for 36 to 38 mm bolt through centre.
- Follower is suitable for 8mm square spindle.
- Zinc Live bolt, Dead bolt
- MS Striker Plate & Face Plate.
- Live bolt tested for 100,000 Cycles & Dead Bolt for 50,000 cycles.
- Followers : Latch 8mm, for use with sprung liver furniture.
- Dead bolt 5mm, for use with bathroom furniture turn/emergency release.

Finish Available : EB, NP, Matt Black

3 LEVER MORTICE SASH LOCK



TECHNICAL DATA

ITEM CODE	SIZE	BACKSET	CASE SIZE	CENTRE DISTANCE	PCS. IN INNER	PCS. IN OUTER
LAL1399	2"	31	51X102	57	10	40

FEATURES:-

- Easily Reversible by pushing live bolt in side & rotating to change from inward to outward opening.
- Over 100 Key differs.
- Follower is suitable for 8mm square spindle.
- Zinc Live bolt, Dead bolt & Key.
- MS Striker Plate & Face Plate.
- Live bolt tested for 100,000 Cycles & Dead Bolt for 50,000 cycles.

Finish Available : EB, NP, Matt Black

* Note : All Dimensions are in mm.

3 LEVER MORTICE SASH LOCK



TECHNICAL DATA

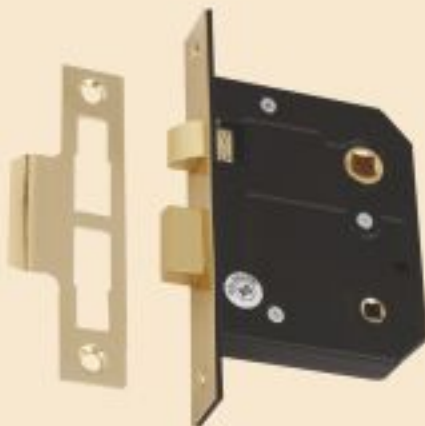
ITEM CODE	SIZE	BACKSET	CASE SIZE	CENTRE DISTANCE	PCS. IN INNER	PCS. IN OUTER	PCS. IN PALLET
LAL1300	2.5"	46	65X102	57	1	10	2160
LAL1301	3"	58	78X102	57	1	10	1860

FEATURES:-

- Over 100 Key differs.
- Screw based reversible mechanism i.e. open the screw in live bolt & rotate to change from inside opening to out side opening & screwed back.
- Follower is suitable for 8mm square spindle.
- Zinc Live bolt, Dead bolt & Key.
- MS Striker Plate & Face Plate.
- Live bolt tested for 100,000 Cycles & Dead Bolt for 50,000 cycles.
- Available with bolt through provision for 30 to 38 mm bolt through centre.
- Compatible with LAA0001, LAA1231, LAA1236, LAA1241 Rebate Set.

Finish Available : EB, NP

BATHROOM LOCK



TECHNICAL DATA

ITEM CODE	SIZE	BACKSET	CASE SIZE	CENTRE DISTANCE	PCS. IN INNER	PCS. IN OUTER	PCS. IN PALLET
LAL1310	2.5"	46	65X102	57	1	10	2640
LAL1311	3"	58	78X102	57	1	10	2070

FEATURES:-

- Screw based reversible mechanism i.e. open the screw in live bolt & rotate to change from inside opening to out side opening & screwed back.
- Follower is suitable for 8mm square spindle.
- Zinc Live bolt, Dead bolt.
- MS Striker Plate & Face Plate.
- Live bolt tested for 100,000 Cycles & Dead Bolt for 50,000 cycles.
- Available with bolt through provision for 30 to 38 mm bolt through centre.
- Followers : Latch 8mm, for use with sprung liver furniture.
- Dead bolt 5mm, for use with bathroom furniture turn/emergency release.
- Compatible with LAA0001, LAA1231, LAA1236, LAA1241 Rebate Set.

Finish Available : EB, NP

* Note : All Dimensions are in mm.

3 LEVER MORTICE SASH LOCK



TECHNICAL DATA

ITEM CODE	SIZE	BACKSET	CASE SIZE	CENTRE DISTANCE	PCS. IN INNER	PCS. IN OUTER	PCS. IN PALLET
LAL1200	2.5"	44	64X102	57	10	40	1560
LAL1201	3"	57	77X102	57	10	40	1120

FEATURES:-

- Over 100 Key differs
- Easy bolt reversible mechanism i.e. pull out live bolt rotate & release to change from inside opening to out side opening.
- Follower is suitable for 8mm square spindle.
- Zinc Live bolt, Dead bolt & Key
- MS Striker Plate & Face Plate
- Live bolt tested for 100,000 Cycles & Dead Bolt for 50,000 cycles.
- Available with bolt through provision for 36 to 38 mm bolt through centre.
- Compatible with LAA0001, LAA1231, LAA1236,LAA1241 Rebate Set.

Finish Available : EB, NP

Also Available in Radius Corner (LAL1206-2.5" & LAL1207-3").

3 LEVER DEAD LOCK



TECHNICAL DATA

ITEM CODE	SIZE	BACKSET	CASE SIZE	PCS. IN INNER	PCS. IN OUTER	PCS. IN PALLET
LAL1220	2.5"	44	64X70	10	40	1560
LAL1221	3"	57	77X70	10	40	1120

FEATURES:-

- Over 100 Key differs.
- Zinc dead bolt & Key.
- Mild Steel Striker Plate & Face Plate.
- Dead Bolt tested for 50,000 cycles.
- Complete with 32mm escutcheon.
- Compatible with LAA0020, LAA1233, LAA1237,LAA1242 Rebate Set.

Finish Available : EB, NP

Also Available in Radius Corner (LAL1224-2.5" & LAL1225-3").

* Note : All Dimensions are in mm.

BATHROOM LOCK



TECHNICAL DATA

ITEM CODE	SIZE	BACKSET	CASE SIZE	CENTRE DISTANCE	PCS. IN INNER	PCS. IN OUTER	PCS. IN PALLET
LAL1210	2.5"	44	64X102	57	10	40	1560
LAL1211	3"	57	77X102	57	10	40	1120

FEATURES:-

- Easy bolt reversible mechanism i.e. pull out live bolt rotate & release to change from inside opening to out side opening.
- Zinc Live bolt, Dead bolt
- MS Striker Plate & Face Plate
- Live bolt tested for 100,000 Cycles & Dead Bolt for 50,000 cycles.
- Available with bolt through provision for 36 to 38 mm bolt through centre.
- Followers : Latch 8mm, for use with sprung lever furniture.
- Dead bolt 5mm, for use with turn/emergency release.
- Compatible with LAA0001, LAA1231, LAA1236, LAA1241 Rebate Set.

Finish Available : EB, NP

Also Available In Radius Corner (LAL1216-2.5" & LAL1217-3")

REBATED MORTICE SASH LOCK



TECHNICAL DATA

ITEM CODE	SIZE	BACKSET	CASE SIZE	CENTRE DISTANCE	PCS. IN INNER	PCS. IN OUTER	PCS. IN PALLET
LAL1404	2.5"	43	65X102	57	1	10	1980
LAL1405	3"	57	78X102	57	1	10	1770

FEATURES:-

- Over 100 Key differs.
- Follower is suitable for 8mm square spindle.
- Zinc Live bolt, Dead bolt & Key.
- MS Striker Plate & Face Plate.
- Live bolt tested for 100,000 Cycles & Dead Bolt for 50,000 cycles.
- Available with bolt thru provision for 36 to 38mm bolt through centre (only 3")

Finish Available : EB, NP

* Note : All Dimensions are in mm.

2 LEVER MORTICE SASH LOCK (IRISH LOCK)



TECHNICAL DATA

ITEM CODE	SIZE	BACKSET	CASE SIZE	CENTRE DISTANCE	PCS. IN INNER	PCS. IN OUTER	PCS. IN PALLET
LAL1390	2.5"	44	63x101	57	1	10	2160
LAL1391	3"	57	76x101	57	1	10	1860

FEATURES:-

- Over 100 Key differs.
- Screw based reversible mechanism i.e. open the screw in live bolt & rotate to change from inside opening to out side opening & screwed back.
- Follower is suitable for 8mm square spindle.
- Zinc Live bolt, Dead bolt & Key.
- MS Striker Plate & Face Plate.
- Live bolt tested for 100,000 Cycles & Dead Bolt for 50,000 cycles.
- Available with bolt through provision for 30 to 38 mm bolt through centre.

Finish Available : EB, NP

BATHROOM LOCK (IRISH LOCK)



TECHNICAL DATA

ITEM CODE	SIZE	BACKSET	CASE SIZE	CENTRE DISTANCE	PCS. IN INNER	PCS. IN OUTER	PCS. IN PALLET
LAL1392	2.5"	44	63x101	57	1	10	2640
LAL1393	3"	57	76x101	57	1	10	2070

FEATURES:-

- Screw based reversible mechanism i.e. open the screw in live bolt & rotate to change from inside opening to out side opening & screwed back.
- Follower is suitable for 8mm square spindle.
- Zinc Live bolt, Dead bolt.
- MS Striker Plate & Face Plate.
- Live bolt tested for 100,000 Cycles & Dead Bolt for 50,000 cycles.
- Available with bolt through provision for 30 to 38 mm bolt through centre.
- Followers : Latch 8mm, for use with sprung liver furniture.
- Dead bolt 5mm, for use with bathroom furniture turn/emergency release.

Finish Available : EB, NP

* Note : All Dimensions are in mm.

HORIZONTAL 3 LEVER SASH LOCK

TECHNICAL DATA

ITEM CODE	SIZE	BACKSET	CASE SIZE	CENTRE DISTANCE	PCS. IN INNER	PCS. IN OUTER	PCS. IN PALLET
LAL1407	5"	38	70X124	64	1	10	1080
LAL1406	6"	50	70X148	76	1	10	1080



FEATURES:-

- Over 100 Key differs.
- Available with bolt through provision for 32 to 38 mm bolt through centre.
- Follower is suitable for 8mm square spindle.
- Brass Live bolt, Dead bolt & Zinc Key
- MS Striker Plate & Face Plate
- Live bolt tested for 100,000 Cycles & Dead Bolt for 50,000 cycles.

Finish Available : EB, NP

HORIZONTAL BATHROOM LOCK

TECHNICAL DATA

ITEM CODE	SIZE	BACKSET	CASE SIZE	CENTRE DISTANCE	PCS. IN INNER	PCS. IN OUTER	PCS. IN PALLET
LAL5239	5"	38	70X124	64	1	10	1080
LAL5240	6"	50	70X148	76	1	10	1080



FEATURES:-

- Available with bolt through provision for 32 to 38 mm bolt through centre.
- Follower is suitable for 8mm square spindle.
- Brass Live bolt, Dead bolt.
- MS Striker Plate & Face Plate.
- Live bolt tested for 100,000 Cycles & Dead Bolt for 50,000 cycles.

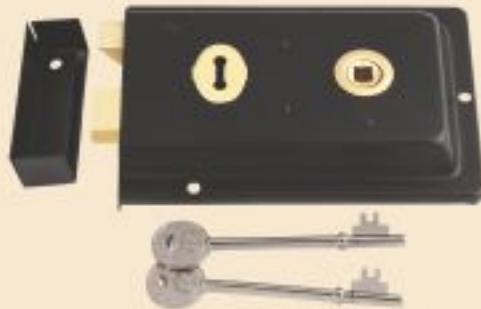
Finish Available : EB, NP

* Note : All Dimensions are in mm.

FLUTED RIM LOCK

TECHNICAL DATA

ITEM CODE	SIZE	KEY BACKSET	HANDLE BACKSET	CASE SIZE	PCS. IN INNER	PCS. IN OUTER	PCS. IN PALLET
LAL1031	6"X4"	43	105	143X83	1	10	1500



FEATURES:-

- 2 Lever, 2 bolt rim lock.
- 2 Keys included.
- Mild Steel Body.
- Zinc Live Bolt, Dead Bolt & Follower.
- 12 Key Differs.
- Complete with screws.

Finish Available : EXB, EXG, CP, EB, SNP, SCP
Also Available In Brass Metal Body.

NARROW STYLE RIM LOCK

TECHNICAL DATA

ITEM CODE	SIZE	KEY BACKSET	HANDLE BACKSET	CASE SIZE	PCS. IN INNER	PCS. IN OUTER	PCS. IN PALLET
LAL1021	5.1/2"X3"	43	106	143X83	1	10	1500



FEATURES:-

- 2 Bolt rim lock.
- 2 Keys included.
- 8mm follower.
- Mild Steel Body.
- Zinc Live Bolt, Dead Bolt & Follower.
- Complete with screws.
- 12 Key Differs.

Finish Available : EXB, EXG, CP, EB, SNP, SCP

* Note : All Dimensions are in mm.

RIM DEAD LOCK

TECHNICAL DATA

ITEM CODE	SIZE	BACKSET	CASE SIZE	PCS. IN INNER	PCS. IN OUTER	PCS. IN PALLET
LAL1011	4"x3"	43	106X83	1	10	1750



FEATURES:-

- 1 bolt rim dead lock.
- 2 keys included.
- To suit doors 35-54 mm thick.
- Mild steel body.
- Zinc Dead Bolt.
- 12 Key Differs.
- Complete with screws.

Finish Available : EXB, EXG, CP, EB, SNP, SCP

RIM LATCH WITH LOCKING SNIB

TECHNICAL DATA

ITEM CODE	SIZE	BACKSET	CASE SIZE	PCS. IN INNER	PCS. IN OUTER	PCS. IN PALLET
LAL1001	4"	76	106X83	1	10	1750



FEATURES:-

- Rim latch with a case depth of 100mm and snib function.
- 8mm follower.
- Mild steel body.
- Zinc Live Bolt, Bolt & Snib.
- Complete with screws.

Finish Available : EXB, EXG, CP, EB, SNP, SCP

* Note : All Dimensions are in mm.

RIM SLIM DEAD LOCK

TECHNICAL DATA

ITEM CODE	SIZE	BACKSET	CASE SIZE	PCS. IN INNER	PCS. IN OUTER	PCS. IN PALLET
LAL1012	4"X3"	48	103X70	1	10	1750



FEATURES:-

- 1 bolt rim dead lock.
- 2 Keys included.
- To suit doors 35-54mm thick.
- Mild Steel Body.
- Zinc Live Bolt.
- 12 Key Differs.
- Complete with screws.

Finish Available : EXB, EXG

SCOTCH SPRING RIM LOCK

TECHNICAL DATA

ITEM CODE	SIZE	KEY BACKSET	HANDLE BACKSET	CASE SIZE	PCS. IN INNER	PCS. IN OUTER	PCS. IN PALLET
LAL1023	6"X4"	55	117	106X153	1	10	910



FEATURES:-

- 2 keys included.
- 8mm follower.
- Mild Steel Body.
- Zinc Live Bolt, Dead Bolt & Follower.
- Complete with screws.
- Available as handed variants.

Finish Available : EXB, EXG

* Note : All Dimensions are in mm.

ORNAMENTAL RIM LATCH LOCK

TECHNICAL DATA

ITEM CODE	SIZE	BACKSET	CASE SIZE	PCS. IN INNER	PCS. IN OUTER	PCS. IN PALLET
LAL1032	5"	76	121x121	1	10	1750



FEATURES:-

- Rim latch with a case depth of 100mm and snib function.
- 8mm follower.
- Mild steel body.
- Zinc Live Bolt, Bolt & Snib.
- Complete with screws.

Finish Available : EXB, EXG, PEWTER

ORNAMENTAL RIM DEAD LOCK

TECHNICAL DATA

ITEM CODE	SIZE	BACKSET	CASE SIZE	PCS. IN INNER	PCS. IN OUTER	PCS. IN PALLET
LAL1033	5"	43	43	1	10	1750



FEATURES:-

- 1 bolt rim dead lock.
- 2 Keys included.
- To suit doors 35-54mm thick.
- Mild Steel Body.
- Zinc Live Bolt.
- 12 Key Differs.
- Complete with screws.

Finish Available : EXB, EXG, PEWTER

* Note : All Dimensions are in mm.

GOTHIC RIM LATCH

TECHNICAL DATA

ITEM CODE	SIZE	BACKSET	CASE SIZE	PCS. IN INNER	PCS. IN OUTER	PCS. IN PALLET
LAL1046	4"	80	109x73	1	10	1750
LAL1047	5"	102	130x88	1	10	1750



FEATURES:-

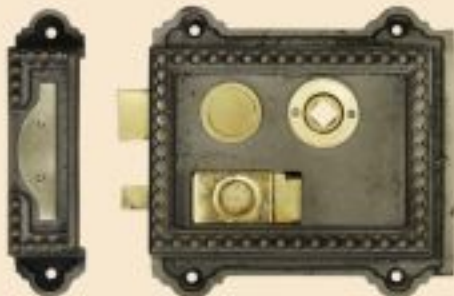
- High corrosion resistance
- Suitable for 8mm spindle
- Complete with fixings

Finish Available : EXB, EXG, PEWTER

FLORAL RIM LATCH

TECHNICAL DATA

ITEM CODE	SIZE	BACKSET	CASE SIZE	PCS. IN INNER	PCS. IN OUTER	PCS. IN PALLET
LAL1035	4"	66	118x114	1	10	1750



FEATURES:-

- High corrosion resistance
- Suitable for 8mm spindle
- Supplied with 2 keys
- 12 key differs
- Complete with fixings

Finish Available : EXB, EXG, PEWTER

* Note : All Dimensions are in mm.



VICTORIAN RIM LATCH

TECHNICAL DATA

ITEM CODE	SIZE	BACKSET	CASE SIZE	PCS. IN INNER	PCS. IN OUTER	PCS. IN PALLET
LAL1036	4"	36	113x115	1	10	1750



FEATURES:-

- High corrosion resistance
- Suitable for 8mm spindle
- Complete with fixings

Finish Available : EXB, EXG, PEWTER

REGENCY RIM DEAD LOCK

TECHNICAL DATA

ITEM CODE	SIZE	BACKSET	CASE SIZE	PCS. IN INNER	PCS. IN OUTER	PCS. IN PALLET
LAL1037	4"	78	113x115	1	10	1750



FEATURES:-

- High corrosion resistance
- Suitable for 8mm spindle
- Supplied with 2 keys
- 12 key differs
- Complete with fixings

Finish Available : EXB, EXG, PEWTER

* Note : All Dimensions are in mm.



CORMWELL RIM LATCH

TECHNICAL DATA

ITEM CODE	SIZE	BACKSET	CASE SIZE	PCS. IN INNER	PCS. IN OUTER	PCS. IN PALLET
LAL1038	5"	62	113x115	1	10	1750



FEATURES:-

- High corrosion resistance
- Suitable for 8mm spindle
- Complete with fixings

Finish Available : EXB, EXG, PEWTER

DAVENPORT RIM LOCK

TECHNICAL DATA

ITEM CODE	SIZE	BACKSET	CASE SIZE	PCS. IN INNER	PCS. IN OUTER	PCS. IN PALLET
LAL1040	6"	125	168x123	1	10	1750



FEATURES:-

- High corrosion resistance
- Suitable for 8mm spindle
- Supplied with 2 keys
- 12 key differs
- Complete with fixings

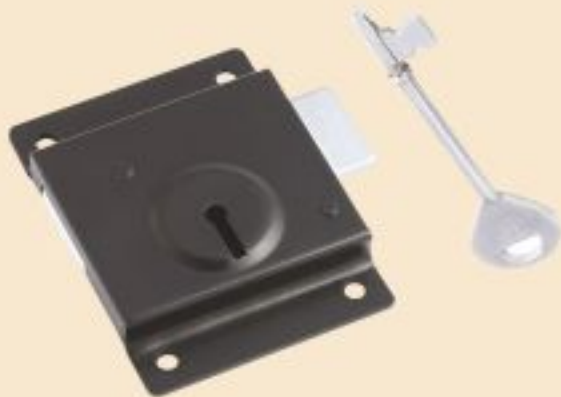
Finish Available : EXB, EXG, PEWTER

* Note : All Dimensions are in mm.

PRESS LOCK C/W 1 KEY

TECHNICAL DATA

ITEM CODE	SIZE	BACKSET	CASE SIZE	PCS. IN INNER	PCS. IN OUTER	PCS. IN PALLET
LAL1000	3"	76	100	10	100	2400
LAL1004	4"	100	100	10	50	2000
LAL1005	5"	125	100	10	50	2000



Finish Available : EXB

Also Available LAL 1003-3" with Long Key.

CONTRACT PRESS LOCK C/W 1 KEY

TECHNICAL DATA

ITEM CODE	SIZE	BACKSET	CASE SIZE	PCS. IN INNER	PCS. IN OUTER	PCS. IN PALLET
LAL1006	63MM	70	90	10	100	2400



Finish Available : EXB

* Note : All Dimensions are in mm.

TUBULAR LATCH - CE CERTIFIED



TECHNICAL DATA

ITEM CODE	SIZE	BACKSET	CASE SIZE	PCS. IN INNER	PCS. IN OUTER	PCS. IN PALLET
LAL0071	2.5"	45	67X22	10	100	6000
LAL0072	3"	57	79X22	10	100	6000
LAL0073	4"	82	104X22	10	100	3600
LAL0074	5"	107	129X22	5	80	3600

BSEN : 12209:2003

N	P	D	M	4	1	O	F	-	B	O	1	O
---	---	---	---	---	---	---	---	---	---	---	---	---

FEATURES:-

- Suitable for 200,000 Cycles.
- Zinc Live Bolt, Zinc follower, MS Faceplate, MS Striker plate & M S Body.
- Follower suitable for 8mm square spindle.
- Suitable for internal doors.
- To be used with Sprung furniture.
- Rebate set available (LAA0010).

Finish Available : CP, SCP, SNP, EB

Also Available in Radius Corner (LAL0076 - 2.5", LAL0077 - 3", LAL0078 - 4", LAL0079 - 5")

TUBULAR LATCH (BOLT THROUGH) - CE CERTIFIED



TECHNICAL DATA

ITEM CODE	SIZE	BACKSET	CASE SIZE	PCS. IN INNER	PCS. IN OUTER	PCS. IN PALLET
LAL0081	2.5"	45	67X20	10	100	6000
LAL0082	3"	57	79X20	10	100	6000
LAL0083	4"	83	104X22	10	100	3600
LAL0084	5"	107	129X22	5	80	3600

BSEN : 12209:2003

N	P	D	M	4	1	O	F	-	B	O	1	O
---	---	---	---	---	---	---	---	---	---	---	---	---

FEATURES:-

- Suitable for 200,000 Cycles.
- Zinc Live Bolt, Zinc follower, MS Faceplate, MS Striker plate & MS Body.
- Two piece faceplate assembly.
- Follower suitable for 8mm square spindle.
- Suitable for internal doors.
- To be used with Sprung furniture.
- Suitable for bolt through fixing of 32-38mm.
- Rebate set available (LAA0010).

Finish Available : CP, SCP, SNP, EB

Also Available in Radius Corner (LAL0086 - 2.5", LAL0087 - 3", LAL0088 - 4", LAL0089 - 5")

* Note : All Dimensions are in mm.

STANDARD TUBULAR LATCH



TECHNICAL DATA

ITEM CODE	SIZE	BACKSET	CASE SIZE	PCS. IN INNER	PCS. IN OUTER	PCS. IN PALLET
LAL0010	2"	33	19x55	10	100	6000
LAL0001	2.5"	45	67x20	10	100	6000
LAL0002	3"	57	79x20	10	100	6000

FEATURES:-

- Suitable for 100,000 Cycles.
- Zinc Live Bolt, Zinc follower, MS Faceplate, MS Striker plate & MS Body.
- Follower is suitable for 8mm square spindle.
- Suitable for internal doors.
- To be used with Sprung door furniture.
- Rebate set available (LAA0010).

Finish Available : EB, NP

Also Available in Radius Corner (LAL0006-2.5" & LAL0007-3")

TUBULAR LATCH (BOLT THROUGH)



TECHNICAL DATA

ITEM CODE	SIZE	BACKSET	CASE SIZE	PCS. IN INNER	PCS. IN OUTER	PCS. IN PALLET
LAL0011	2.5"	45	67x20	10	100	6000
LAL0012	3"	57	79x20	10	100	6000

FEATURES:-

- Suitable for 80,000 Cycles.
- Zinc Live Bolt, Zinc Follower, MS Faceplate, MS Striker Plate & MS Body.
- Two piece, faceplate assembly.
- Follower suitable for 8mm square spindle.
- Suitable for light door furniture.
- To be used with Sprung door furniture.
- Suitable for bolt through fixing of 32-38mm.
- Can be used with Rebate set.
- Rebate set available (LAA0010).

Finish Available : EB, NP

Also Available in Radius Corner (LAL0016-2.5" & LAL0017-3")

* Note : All Dimensions are in mm.

TUBULAR LATCH (BOLT THROUGH)

TECHNICAL DATA

ITEM CODE	SIZE	BACKSET	CASE SIZE	PCS. IN INNER	PCS. IN OUTER	PCS. IN PALLET
LAL0041	2.5"	45	67X20	10	100	6000
LAL0042	3"	57	79X20	10	100	6000



FEATURES:-

- Suitable for 100,000 Cycles.
- Zinc Live Bolt, Zinc follower, MS Faceplate, MS Striker plate & MS Body.
- Follower is suitable for 8mm square spindle.
- Suitable for light doors.
- Sprung furniture.
- Suitable for bolt through 32-38mm center.
- Rebate set available (LAA0010).
- Tolerance : ± 2 mm.

Finish Available : EB / NP

Also Available In Radius Corner (LAL0046 - 2.5" & LAL0047 - 3")

BUDGET TUBULAR LATCH (BOLT THROUGH)

TECHNICAL DATA

ITEM CODE	SIZE	BACKSET	CASE SIZE	PCS. IN INNER	PCS. IN OUTER	PCS. IN PALLET
LAL0054	2.5"	45	67X20	10	100	6000
LAL0055	3"	57	79X20	10	100	6000



FEATURES:-

- Suitable for 50,000 Cycles.
- Zinc Live Bolt, Nylon follower, MS Faceplate, MS Striker plate & M S Body.
- Follower is suitable for 8mm square spindle.
- Suitable for light doors.
- Sprung furniture.
- Suitable for bolt through 32-38mm center.
- Rebate set available (LAA0010).

Finish Available : EB / NP

* Note : All Dimensions are in mm.

TUBULAR LATCH (BOLT THROUGH) WITH REMOVABLE FACE PLATE

TECHNICAL DATA

ITEM CODE	SIZE	BACKSET	CASE SIZE	PCS. IN INNER	PCS. IN OUTER	PCS. IN PALLET
LAL0031	2.5"	45	67X20	10	100	6000
LAL0032	3"	57	79X20	10	100	6000



FEATURES:-

- Suitable for 100,000 Cycles.
- Zinc Live Bolt, Zinc follower, MS Faceplate, MS Striker plate & M S Body.
- Two piece faceplate assembly.
- Available with removable face plate to help reduce inventory.
- Follower is suitable for 8mm square spindle.
- Suitable for light doors.
- Sprung furniture.
- Suitable for bolt through 32-38mm centre.
- Rebate set available (LAA0010).

Finish Available : EXB, NP, EB, CP, SCP, SNP

TUBULAR LATCH (BOLT THROUGH) WITH TWO SET OF REMOVABLE FACE PLATE

TECHNICAL DATA

ITEM CODE	SIZE	BACKSET	CASE SIZE	PCS. IN INNER	PCS. IN OUTER	PCS. IN PALLET
LAL0998	2.5"	45	67X20	10	100	6000
LAL0999	3"	57	79X20	10	100	6000



FEATURES:-

- Suitable for 100,000 Cycles.
- Zinc Live Bolt, Zinc follower, MS Faceplate, MS Striker plate & M S Body.
- Two piece faceplate assembly.
- Available with removable face plate to help reduce inventory.
- Follower is suitable for 8mm square spindle.
- Suitable for light doors.
- Sprung furniture.
- Suitable for bolt through 32-38mm centre.
- Supplied with two sets of faceplate, Striker Plate & Screws.
- Rebate set available (LAA0010).

Finish Available : As per required

* Note : All Dimensions are in mm.

ARCHITECTURAL TUBULAR LATCH - CE CERTIFIED



TECHNICAL DATA

ITEM CODE	SIZE	BACKSET	CASE SIZE	PCS. IN INNER	PCS. IN OUTER	PCS. IN PALLET
LAL0131	2.5"	45	65X23	10	100	2400
LAL0132	3"	57	78X23	10	100	2400
LAL0133	4"	82	103X23	10	100	2400
LAL0134	5"	107	128X23	5	80	1920

BSEN : 12209:2003 **1 M 4 1 0 F - B 0 1 0**

FEATURES:-

- Easily reversible mechanism by turning live bolt as suitable for inward / outward opening door.
- Suitable for 200,000 Cycles.
- Brass Live bolt, Zinc follower, MS Faceplate, MS Striker Plate & MS Body.
- Dual set of Face plate, Striker Plate & Fixing screws.
- Follower is suitable for 8mm square spindle.

Finish Available : As per required

Also Available in Radius Corner (LAL0141 - 2.5", LAL0142 - 3", LAL0143 - 4" & LAL0144 - 5")

Also Available in Forend and Striker Plates Pack (LAA0137, LAA0138 and LAA0139)

ARCHITECTURAL (H/D) TUBULAR LATCH BOLT THROUGH - CE CERTIFIED



TECHNICAL DATA

ITEM CODE	SIZE	BACKSET	CASE SIZE	PCS. IN INNER	PCS. IN OUTER	PCS. IN PALLET
LAL0137	3"	57	78X23	10	100	2400
LAL0138	4"	82	103X23	10	100	2400
LAL0139	5"	107	128X23	5	80	1920

BSEN : 12209:2003 **1 M 4 1 0 F - B 0 1 0**

FEATURES:-

- Easily reversible mechanism by turning live bolt as suitable for inward / outward opening door.
- Suitable for 200,000 Cycles.
- Brass Live bolt, Zinc follower, MS Faceplate, MS Striker Plate & MS Body.
- Dual set of Face plate, Striker Plate & Fixing screws.
- Follower is suitable for 8mm square spindle.
- Suitable for bolt through 32-38mm center.

Finish Available : As per required

Also Available in Radius Corner (LAL0147 - 3", LAL0148 - 4" & LAL0149 - 5")

Also Available in Forend and Striker Plates Pack (LAA0137, LAA0138 and LAA0139)

* Note : All Dimensions are in mm.

ARCHITECTURAL TUBULAR LATCH



TECHNICAL DATA

ITEM CODE	SIZE	BACKSET	CASE SIZE	PCS. IN INNER	PCS. IN OUTER	PCS. IN PALLET
LAL0101	2.5"	45	65X23	10	100	2400
LAL0102	3"	57	78X23	10	100	2400
LAL0103	4"	82	103X23	10	100	2400
LAL0104	5"	107	128X23	5	80	1920

FEATURES:-

- Suitable for 150,000 Cycles.
- Brass Live Bolt, Zinc follower, MS Faceplate, MS Striker plate & MS Body.
- Dual set of Face Plate, Striker Plate & Fixing screws.
- Follower is suitable for 8mm square spindle.

Finish Available : As per required

Also Available in Radius Corner (LAL0121 - 2.5", LAL0122 - 3", LAL0123 - 4" & LAL0124 - 5")

ARCHITECTURAL TUBULAR LATCH BOLT THROUGH



TECHNICAL DATA

ITEM CODE	SIZE	BACKSET	CASE SIZE	PCS. IN INNER	PCS. IN OUTER	PCS. IN PALLET
LAL0111	3"	57	78X23	10	100	2400
LAL0112	4"	82	103X23	10	100	2400
LAL0113	5"	107	128X23	5	80	1920

FEATURES:-

- Suitable for 150,000 cycles.
- Brass Live bolt, Zinc follower, MS Faceplate, MS Striker Plate & MS Body.
- Dual set of Face plate, Striker Plate & Fixing screws.
- Follower is suitable for 8mm square spindle.
- Suitable for bolt through 32-38mm center.

Finish Available : As per required

NOTE: 2.5" Size is not available in Bolt Through model.

* Note : All Dimensions are in mm.

ROUND TUBULAR LATCH BOLT (EASY LATCH)



12209:2003



1634-1



FIRE TESTED
FD-20/30/60
MINUTES

TECHNICAL DATA

ITEM CODE	SIZE	BACKSET	CASE SIZE	PCS. IN INNER	PCS. IN OUTER	PCS. IN PALLET
LAL0255	2.5"	45	58x20	10	100	6000
LAL0256	3"	57	70x20	10	100	6000

FEATURES:-

- Suitable for 100,000 Cycles.
- Zinc Live Bolt, Zinc follower, Zinc Faceplate, Aluminum Striker plate.
- Follower is suitable for 8mm square spindle.
- Suitable for light doors.
- Sprung furniture.
- Suitable for bolt through 32-38mm centre.

Finish Available : EB, NP, SNP, CP

ROUND TUBULAR LATCH BOLT (EASY LATCH)



TECHNICAL DATA

ITEM CODE	SIZE	BACKSET	CASE SIZE	PCS. IN INNER	PCS. IN OUTER	PCS. IN PALLET
LAL0251	2.5"	45	58x20	10	100	6000
LAL0252	3"	57	70x20	10	100	6000

FEATURES:-

- Suitable for 100,000 Cycles.
- Zinc Live Bolt, Zinc follower, Zinc Faceplate, Aluminum Striker plate.
- Follower is suitable for 8mm square spindle.
- Suitable for light doors.
- Sprung furniture.
- Suitable for bolt through 32-38mm centre.

Finish Available : EB, NP, SNP, CP

* Note : All Dimensions are in mm.

ROUND TUBULAR DEAD BOLT

TECHNICAL DATA

ITEM CODE	SIZE	BACKSET	CASE SIZE	PCS. IN INNER	PCS. IN OUTER	PCS. IN PALLET
LAL0265	2.5"	45	65X20	10	100	6000
LAL0266	3"	57	77X20	10	100	6000



12209:2003



1634-1



FIRE TESTED
FD-20/30/60
MINUTES

FEATURES:-

- Suitable for 50,000 Cycles.
- Zinc Dead Bolt, Zinc follower, Zinc Faceplate, Aluminum Striker plate.
- Follower is suitable for 5mm square spindle.
- Suitable for bolt through 32-38mm centre.

Finish Available : EB, NP, SNP, CP

* Note : All Backset in MM

ROUND TUBULAR DEAD BOLT

TECHNICAL DATA

ITEM CODE	SIZE	BACKSET	CASE SIZE	PCS. IN INNER	PCS. IN OUTER	PCS. IN PALLET
LAL0261	2.5"	45	65X20	10	100	6000
LAL0262	3"	57	77X20	10	100	6000



FEATURES:-

- Suitable for 50,000 Cycles.
- Zinc Dead Bolt, Zinc follower, Zinc Faceplate, Aluminum Striker plate.
- Follower is suitable for 5mm square spindle.
- Suitable for bolt through 32-38mm centre.

Finish Available : EB, NP, SNP, CP

* Note : All Dimensions are in mm.

HEAVY DUTY ROUND TUBULAR LATCH BOLT (EASY LATCH)



12209:2003



1634-1



FIRE TESTED
FD-20/30/60
MINUTES

TECHNICAL DATA

ITEM CODE	SIZE	BACKSET	CASE SIZE	PCS. IN INNER	PCS. IN OUTER	PCS. IN PALLET
LAL0270	2.5"	45	58X22	10	100	6000
LAL0271	3"	57	78X22	10	100	6000

FEATURES:-

- Suitable for 100,000 Cycles.
- Zinc Live Bolt, Zinc follower, Zinc Faceplate, Aluminum Striker plate.
- Follower is suitable for 8mm square spindle.
- Suitable for light doors.
- Sprung furniture.
- Suitable for bolt through 32-38mm centre.

Finish Available : EB, NP, SNP, CP

HEAVY DUTY ROUND TUBULAR LATCH BOLT (EASY LATCH)



TECHNICAL DATA

ITEM CODE	SIZE	BACKSET	CASE SIZE	PCS. IN INNER	PCS. IN OUTER	PCS. IN PALLET
LAL0285	2.5"	45	58X22	10	100	6000
LAL0286	3"	57	78X22	10	100	6000

FEATURES:-

- Suitable for 100,000 Cycles.
- Zinc Live Bolt, Zinc follower, Zinc Faceplate, Aluminum Striker plate.
- Follower is suitable for 8mm square spindle.
- Suitable for light doors.
- Sprung furniture.
- Suitable for bolt through 32-38mm centre.

Finish Available : EB, NP, SNP, CP

* Note : All Dimensions are in mm.

HEAVY DUTY ROUND TUBULAR DEAD BOLT

TECHNICAL DATA

ITEM CODE	SIZE	BACKSET	CASE SIZE	PCS. IN INNER	PCS. IN OUTER	PCS. IN PALLET
LAL0287	2.5"	45	65X22	10	100	6000
LAL0288	3"	57	77X22	10	100	6000



FEATURES:-

- Suitable for 50,000 Cycles.
- Zinc Dead Bolt, Zinc follower, Zinc Faceplate, Aluminum Striker plate.
- Follower is suitable for 5mm square spindle.
- Suitable for bolt through 32-38mm centre.

Finish Available : EB, NP, SNP, CP

TUBULAR LATCH (NYLON BODY)

TECHNICAL DATA

ITEM CODE	SIZE	BACKSET	CASE SIZE	PCS. IN INNER	PCS. IN OUTER	PCS. IN PALLET
LAL0289	3"	60	84X22	10	100	6000



FEATURES:-

- Zinc Live Bolt, Nylon follower, MS Faceplate, MS Striker plate & Nylon Body.
- Follower is suitable for 5mm square spindle.
- Suitable for internal doors.
- To be used with Sprung door furniture.

Finish Available : EB, NP

* Note : All Dimensions are in mm.

CE TUBULAR DEAD BOLT (BOLT THROUGH)



TECHNICAL DATA

ITEM CODE	SIZE	BACKSET	CASE SIZE	PCS. IN INNER	PCS. IN OUTER	PCS. IN PALLET
LAL0275	2.5"	45	65X23	10	100	2400
LAL0276	3"	57	78X23	10	100	2400
LAL0277	4"	82	103X23	10	100	2400
LAL0278	5"	107	179X23	10	80	1920

BSEN : 12209:2003 **3 X 4 1 0 F - B 0 0 0**

FEATURES:-

- Suitable for 50,000 Cycles.
- Brass Dead Bolt, Zinc follower, MS Faceplate, MS Striker Plate & MS Body.
- Follower is suitable for 5mm square spindle.
- Suitable for bolt through fixing 32-38mm.

Finish Available : EB, NP

Also Available in Radius Corner (LAL0280-2.5", LAL0281-3", LAL0282-4", LAL0283-5")

TUBULAR DEAD BOLT (BOLT THROUGH)



TECHNICAL DATA

ITEM CODE	SIZE	BACKSET	CASE SIZE	PCS. IN INNER	PCS. IN OUTER	PCS. IN PALLET
LAL0903	2"	33	23x54	10	100	2400
LAL0904	2.5"	45	65x23	10	100	2400
LAL0905	3"	57	78x23	10	100	2400
LAL0906	4"	82	103x23	10	100	2400
LAL0907	5"	107	179x23	10	80	1920

FEATURES:-

- Suitable for 50,000 Cycles.
- Brass Dead Bolt, Zinc follower, MS Faceplate, MS Striker Plate & MS Body.
- Follower is suitable for 5mm square spindle.
- Suitable for bolt through fixing 32-38mm.

Finish Available : EB, NP

Also Available in Forend and Striker Plates Pack (LAA0904, LAA095, LAA 0906 and LAA0139)

Also Available in Radius Corner (LAL0908-2.5", LAL0909-3", LAL0910-4", LAL0911-5")

* Note : All Dimensions are in mm.

MAGNETIC LATCH

TECHNICAL DATA

ITEM CODE	SIZE	BACKSET	CASE SIZE	PCS. IN INNER	PCS. IN OUTER	PCS. IN PALLET
LAL0069	3"	57	77X23	10	100	2400



FEATURES:-

- Follower is suitable for 8mm square spindle.
- Suitable for bolt through 32-38 mm centre.

Finish Available : NP, EB

REBATED TUBULAR LATCH

TECHNICAL DATA

ITEM CODE	SIZE	BACKSET	CASE SIZE	PCS. IN INNER	PCS. IN OUTER	PCS. IN PALLET
LAL0008	2.5"	45	67X20	10	100	2400
LAL0009	3"	57	79X20	10	100	2400



FEATURES:-

- Follower is suitable for 8mm square spindle.
- Suitable for bolt through 32-38 mm centre.

Finish Available : NP, EB

* Note : All Dimensions are in mm.

CE FLAT MORTICE LATCH (BOLT THROUGH)



12209:2003



1634-1



CF 5531



CE 2812



FIRE TESTED
PD-20/30/60
MINUTES



TECHNICAL DATA

ITEM CODE	SIZE	BACKSET	CASE SIZE	PCS. IN INNER	PCS. IN OUTER	PCS. IN PALLET
LAL1601	2.5"	45	65X57	1	10	2310
LAL1602	3"	57	77X57	1	10	2310
LAL1603	4"	82	102X57	1	10	1260

BSEN : 12209:2003 2 G 5 1 0 F - B 0 1 0

FEATURES:-

- Latch operated by lever handles.
- Case Mild Steel, epoxy powder coated.
- Square forend & Striker Plate.
- Guided Latchbolt : Brass Self handing.
- Follower 8mm brass.
- Suitable for bolt through 32-38mm center.

Finish Available : EB, NP, SNP, CP, SEB, ABR

Also Available In Radius Corner (LAL1604-3",LAL1605-4",LAL1606-5")

FLAT MORTICE LATCH (BOLT THROUGH)



TECHNICAL DATA

ITEM CODE	SIZE	BACKSET	CASE SIZE	PCS. IN INNER	PCS. IN OUTER	PCS. IN PALLET
LAL0056	2.5"	45	65X57	1	10	2310
LAL0057	3"	57	77X57	1	10	2310
LAL0058	4"	82	102X57	1	10	1260

FEATURES:-

- Latch operated by lever handles.
- Case Mild Steel, epoxy powder coated.
- Square forend & Striker Plate.
- Guided Latchbolt : Brass Self handing.
- Follower 8mm brass.
- Suitable for bolt through 32-38mm center.

Finish Available : EB, NP, SNP, CP, SEB, ABR

Also Available In Radius Corner (LAL0065-2.5",LAL0066-3",LAL0067-4")

* Note : All Dimensions are in mm.

TRADITIONAL NIGHTLATCH



TECHNICAL DATA

ITEM CODE	BACKSET	PCS. IN INNER	PCS. IN OUTER
LAL9002	40	1	25
LAL9003	60	1	25

FEATURES:-

- Bolt can be held back with snib.
- Case standard only.
- 2 Brass key.
- Die cast zinc alloy body & brass latch.
- Rim Cylinders available in Polished Brass (PB), Satin Chrome (SCP) & Chrome Plated (CP).

Finish Available : EB, CP, SCP, SNP, EPOXY SILVER, EXW

ALUMINIUM CASTED NIGHTLATCH



TECHNICAL DATA

ITEM CODE	BACKSET	PCS. IN INNER	PCS. IN OUTER
LAL9001	60	1	25

FEATURES:-

- Bolt can be held back with snib.
- Case standard only.
- Keys: 2 no. included.
- Die cast Aluminum alloy body & latch.
- Rim Cylinders available in Polished Brass (PB), Satin Chrome (SCP) & Chrome Plated (CP).

Finish Available : GREEN

* Note : All Dimensions are in mm.

ROLLER BOLT NIGHT LATCH

TECHNICAL DATA

ITEM CODE	BACKSET	PCS. IN INNER	PCS. IN OUTER
LAL9006	60	1	25



FEATURES:-

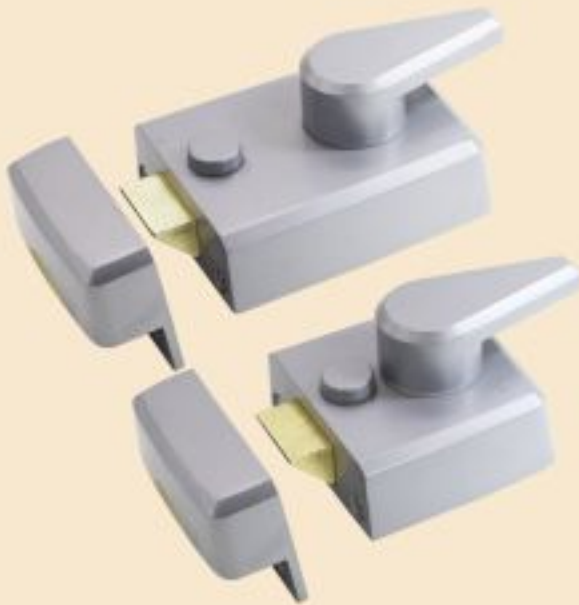
- Roller bolt operates with simple push/pull action.
- Keys 2 no. included.
- Rim Cylinders available in Polished Brass (PB), Satin Chrome (SCP) & Chrome Plated (CP).

Finish Available : Multiple finishes available.

STANDARD STYLE NIGHT LATCH

TECHNICAL DATA

ITEM CODE	BACKSET	PCS. IN INNER	PCS. IN OUTER
LAL9004	40	1	25
LAL9005	60	1	25



FEATURES:-

- Bolt can be held back with snib.
- Keys: 2 no. included.
- Die cast zinc alloy & brass latch.
- Rim Cylinders available in Polished Brass (PB), Satin Chrome (SCP) & Chrome Plated (CP).

Finish Available : Multiple finishes available.

* Note : All Dimensions are in mm.

RIM CYLINDER NIGHT LATCH



TECHNICAL DATA

ITEM CODE	BACKSET	PCS. IN INNER	PCS. IN OUTER
LAL9007	40	1	25
LAL9008	60	1	25

FEATURES:-

- Bolt can be held back with snib.
- Keys: 2 no. included.
- Die cast zinc alloy & brass latch.
- Rim Cylinders available in Polished Brass (PB) & Satin Chrome (SCP).

Finish Available : Multiple finishes available.

WINDOW AND DOOR RACK BOLT



TECHNICAL DATA

ITEM CODE	SIZE	BACKSET	CASE SIZE	CASE DIA	PCS. IN INNER	PCS. IN OUTER
LAC1024 (W/O KEY)	16X42	13	42	16	10	100
LAC1015 (W/O KEY)	16X50	31	60	16	10	100
LAC1016 (W/O KEY)	16X88	59	88	16	10	100
LAC1023 (WITH KEY)	16X42	13	42	16	10	100
LAC1019 (WITH KEY)	16X50	31	60	16	10	100
LAC1020 (WITH KEY)	16X88	59	88	16	10	100

FEATURES:-

- Key Turn operated (Key not included if not ordered).
- To suit doors up to 44mm thick.
- Comprises :
 - 1 x bolt
 - 1 x strike plate
 - 1 x escutcheon
 - 1 x Key Brass (if ordered with key variant).
- Body Mild Steel.

Finish Available : EB, CP, EXW, SCP

* Note : All Dimensions are in mm.

BOX TYPE CUPBOARD CATCH

TECHNICAL DATA

ITEM CODE	LENGTH	WIDTH	HEIGHT	PCS. IN INNER	PCS. IN OUTER	PCS. IN PALLET
LAC0031	38	56	16	5	100	5000



FEATURES:-

- Mild Steel Body.
- Zinc Knob.

Finish Available : EB, NP, CP, BZP, FB

TOUCH LATCH

TECHNICAL DATA

ITEM CODE	SIZE	BACKSET	CASE SIZE	PCS. IN INNER	PCS. IN OUTER	PCS. IN PALLET
LAL0080	3"	57	77X23	10	100	2400



FEATURES:-

- Push to latch and unlatch.
- For use on left hatch doors or cupboard doors.

Finish Available : BZP, NP

* Note : All Dimensions are in mm.

BALES CATCH

TECHNICAL DATA

ITEM CODE	LENGTH	WIDTH	CASE DEPTH	DISTANCE OF CASE	PCS. IN INNER	PCS. IN OUTER	PCS. IN PALLET
LAC0001	45	19.5	15	16	5	100	9000
LAC0002	57.5	23.5	17.5	20	5	100	9000



FEATURES:-

- Sprung ball bearing catch.
- Mild Steel Casing.

Finish Available : NP, EB, SNP

BRASS DOUBLE BALL CATCH

TECHNICAL DATA

DPG CODE	ITEM CODE	LENGTH	WIDTH	THICKNESS	SCREW NO.	WT/ PCS	PCS. IN INNER	PCS. IN OUTER	PCS. IN PALLET
GB2801	BMH2801044	44	8	1.5	4	0.014	50	500	27000
GB2802	BMH2802050	50	9	1.5	4	0.019	50	500	27000
GB2803	BMH2803060	60	9	1.5	4	0.022	50	500	27000
GB2804	BMH2804070	70	9	1.5	4	0.025	50	500	27000



FEATURES:-

- Sprung ball bearing catch.
- Brass Body.

Finish Available : POLISHED & LACQUERED BRASS, CP, SNP, SCP

* Note : All Dimensions are in mm.

SS SLIMLINE MAGNETIC CATCH

TECHNICAL DATA

ITEM CODE	LENGTH	WIDTH	PCS. IN INNER	PCS. IN OUTER	PCS. IN PALLET
LAC0015	42	12	1	100	23100
LAC0016	42	12	1	100	23100



FEATURES:-

- Body Stainless Steel.
- Available In 3.2 kg (LAC0015), 5 Kg Capacity (LAC0016).
- Sleek Finish.

Finish Available : NP, EB

MAGNETIC CATCH

TECHNICAL DATA

ITEM CODE	LENGTH	WIDTH	SCREW NO.	PCS. IN INNER	PCS. IN OUTER	PCS. IN PALLET
LAC0010	40	22	4	5	100	9000
LAC0011	58	22	4	5	100	5000



FEATURES:-

- Suitable for latching of doors / cabinets.
- Body plastic.
- Available In 4 kg (LAC0010), 6 Kg Capacity (LAC0011).

Finish Available : WHITE, BROWN & BLACK

* Note : All Dimensions are in mm.

DOUBLE ROLLER CATCH

TECHNICAL DATA

ITEM CODE	LENGTH	WIDTH	HEIGHT	PCS. IN INNER	PCS. IN OUTER	PCS. IN PALLET
LAC0021	27.5	32.5	16.5	5	100	9000



FEATURES:-

- Mild Steel Body.
- Nylon Rollers.
- Suitable for light Shutter Doors.

Finish Available : BZP, EB, NP

* Note : All Dimensions are in mm.

WARDROBE LOCK



LAL5325

ADJUSTABLE ROLLER CATCH

TECHNICAL DATA

ITEM CODE	LENGTH	WIDTH	PCS. IN INNER	PCS. IN OUTER	PCS. IN PALLET
LAC0023	39	19	10	100	9000
LAC0025	39	19	10	100	9000



FEATURES:-

- Operation : Adjustable roller bolt.
- Body : Zinc (LAC0025), Nylon (LAC0023).
- Forend : Square.
- Strike Plate : Square, Flat.
- Duty : Full size doors, minimum thickness 32mm.

Finish Available : EB, NP, SNP, SCP

ARCHITECTURAL ROLLER BOLT CATCH

TECHNICAL DATA

ITEM CODE	LENGTH	WIDTH	PCS. IN INNER	PCS. IN OUTER	PCS. IN PALLET
LAC0026	45	33	10	100	9000



FEATURES:-

- Operation : Adjustable roller bolt action.
- Frame : Steel.
- Forend : Square, Stainless Steel.
- Strike Plate : Square, Flat, Stainless Steel.
- Duty: Full size doors, minimum thickness 30mm.
- Bolt: Brass.

Finish Available : EB, NP, SNP, SCP

* Note : All Dimensions are in mm.

EURO PROFILE CYLINDER NORMAL

TECHNICAL DATA

ITEM CODE	SIZE	TYPE OF KEY	TYPE OF CYLINDER
LLEL1001	60	Standard	BSK
LLEL1002	70	Standard	BSK
LLEL1003	80	Standard	BSK
LLEL1004	90	Standard	BSK
LLEL1005	100	Standard	BSK
LLEL1011	60	Standard	BSK
LLEL1012	70	Standard	BSK
LLEL1013	80	Standard	BSK
LLEL1014	90	Standard	BSK
LLEL1015	100	Standard	BSK
LLEL1101	60	Standard	CK
LLEL1102	70	Standard	CK
LLEL1103	80	Standard	CK
LLEL1104	90	Standard	CK
LLEL1105	100	Standard	CK
LLEL1111	60	Standard	CK
LLEL1112	70	Standard	CK
LLEL1113	80	Standard	CK
LLEL1114	90	Standard	CK
LLEL1115	100	Standard	CK



1303:2005



100 Hours.



1906
Gr-3



FIRE TESTED
FD-20/30/60/90/120
MINUTES

BSEN : 1303:2005 1 5 0 1 0 A 3 0

FEATURES:-

- High quality genuine brass cylinder.
- CNC machined keys and cylinder.
- Common key available on request.
- Master key available on request.
- Three brass key supplied with cylinder.
- Other finish available on request.
- Other sizes available on request.
- Two tier construction key available on request

Also Available MK/GMK & ABC Cylinders

* Note : All Dimensions are in mm.



EURO PROFILE CYLINDER

TECHNICAL DATA

ITEM CODE	SIZE	TYPE OF KEY	TYPE OF CYLINDER
CT3030	30-30	Standard	BSK
CY3535	35-35	Standard	BSK
CY4040	40-40	standard	BSK
CY4545	45-45	standard	BSK
CY5050	50-50	standard	BSK
CY3035	30-35	standard	BSK
CY3040	30-40	standard	BSK
CY3045	30-45	standard	BSK
CY3050	30-50	standard	BSK
CY3540	35-40	standard	BSK
CY3545	35-45	standard	BSK
CY3550	35-50	standard	BSK
CY4045	40-45	standard	BSK
CY4050	40-50	standard	BSK

BSEN : 1303:2005 **1 5 0 1 0 A 3 0**



1303:2005



100 Hours.



1906
Gr-3



FIRE TESTED
FD-20/30/60/90/120
MINUTES

FEATURES:-

- High quality genuine brass cylinder.
- CNC machined keys and cylinder.
- Common key available on request.
- Master key available on request.
- Three brass key supplied with cylinder.
- Other finish available on request.
- Other sizes available on request.
- Two tier construction key available on request

Also Available MK/GMK & ABC Cylinders

* Note : All Dimensions are in mm.

EURO PROFILE CYLINDER KEY & TURN

TECHNICAL DATA

ITEM CODE	SIZE	TYPE OF KEY	TYPE OF CYLINDER
CT3030	30-30	Standard	CK
CT3535	35-35	Standard	CK
CT4040	40-40	Standard	CK
CT4545	45-45	Standard	CK
CT5050	50-50	Standard	CK
CT3035	30-35	Standard	CK
CT3040	30-40	Standard	CK
CT3045	30-45	Standard	CK
CT3050	30-50	Standard	CK
CT3540	35-40	Standard	CK
CT3545	35-45	Standard	CK
CT3550	35-50	Standard	CK
CT4045	40-45	Standard	CK
CT4050	40-50	Standard	CK
CT3530	35-30	Standard	CK
CT4030	40-30	Standard	CK
CT4530	45-30	Standard	CK
CT5030	50-30	Standard	CK
CT4035	40-35	Standard	CK
CT4535	45-35	Standard	Ck
CT5030	50-30	Standard	Ck
CT4540	45-40	Standard	Ck
CT5040	50-40	Standard	CK

BSEN : 1303:2005 **1 5 0 1 0 A 3 0**

FEATURES:-

- High quality genuine brass cylinder.
- CNC machined keys and cylinder.
- Common key available on request.
- Master key available on request.
- Three brass key supplied with cylinder.
- Other finish available on request.
- Other sizes available on request.
- Two tier construction key available on request

Finish Available SNP, EB, ABR



1303:2005



100 Hours.



1906 Gr-3



FIRE TESTED
FD-20/30/60/90/120
MINUTES

* Note : All Dimensions are in mm.



EURO PROFILE CYLINDER PRIVACY



TECHNICAL DATA

ITEM CODE	SIZE	TYPE OF KEY	TYPE OF CYLINDER
KC3030	30-30	Standard	K-COIN
KC3535	35-35	Standard	K-COIN
KC4040	40-40	Standard	K-COIN
KC4545	45-45	Standard	K-COIN
KC5050	50-50	Standard	K-COIN
KC3035	30-35	Standard	K-COIN
KC3040	30-40	Standard	K-COIN
KC3034	30-45	Standard	K-COIN
KC3050	30-50	Standard	K-COIN
KC3540	35-40	Standard	K-COIN
KC3545	35-45	Standard	K-COIN
KC3550	35-50	Standard	K-COIN
KC4045	40-45	Standard	K-COIN
KC4050	40-50	Standard	K-COIN

BSEN : 1303:2005 1 5 0 1 0 A 3 0

FEATURES:-

- High quality genuine brass cylinder.
- CNC machined keys and cylinder.
- Common key available on request.
- Master key available on request.
- Three brass key supplied with cylinder.
- Other finish available on request.
- Other sizes available on request.
- Two tier construction key available on request

Finish Available SNP, EB, ABR

HALF CYLINDER KEY



TECHNICAL DATA

ITEM CODE	SIZE	TYPE OF KEY	TYPE OF CYLINDER
CYHF30	30	Standard	BSK
CYHF35	35	Standard	BSK
CYHF40	40	Standard	BSK
CYHF45	45	Standard	BSK
CYHF50	50	Standard	BSK

BSEN : 1303:2005 1 5 0 1 0 A 3 0

Finish Available SNP, EB, ABR

* Note : All Dimensions are in mm.



REBATE SET FOR TUBULAR LATCH

TECHNICAL DATA

ITEM CODE	SIZE	LENGTH	WIDTH	PCS. IN INNER	PCS. IN OUTER	PCS. IN PALLET
LAA0010	13mm	57	25	10	100	3600



FEATURES:-

- Zinc body.
- Face Plate Mild Steel.
- Suitable for LAL0001, LAL0002, LAL0011 & LAL0012.

Finish Available : NP, EB

* Note : All Dimension in MM

REBATE SET FOR TUBULAR DEAD BOLT & ARCH. TUBULAR LATCH

TECHNICAL DATA

ITEM CODE	SIZE	LENGTH	WIDTH	PCS. IN INNER	PCS. IN OUTER	PCS. IN PALLET
LAA0077	13mm	57	25	10	100	3600



FEATURES:-

- Zinc body.
- Face Plate Mild Steel.
- Suitable for LAA0275, LAA0276, LAA0277 & LAA0278. & LAA0137, LAA0138, LAA0139.

Finish Available : NP, EB, BLACK

* Note : All Dimensions are in mm.

REBATE SET FOR 3 LEVER LOCK



TECHNICAL DATA

ITEM CODE	SIZE	LENGTH	WIDTH	HEIGHT	PCS. IN INNER	PCS. IN OUTER
LAA0001	13mm	162	33	14	10	100

FEATURES:-

- Mild Steel body.
- Face Plate Mild Steel.
- Suitable for LAL1200 & LAL1201.

Finish Available : EB, NP

REBATE SET FOR 3 LEVER DEAD LOCK



TECHNICAL DATA

ITEM CODE	SIZE	LENGTH	WIDTH	HEIGHT	PCS. IN INNER	PCS. IN OUTER
LAA1220	14mm	128	23.5	14	10	100

FEATURES:-

- Mild Steel body.
- Face Plate Mild Steel.
- Suitable for LAL1220 & LAL1221

Finish Available : EB, NP

* Note : All Dimensions are in mm.



REBATE SET FOR 3 LEVER SASH LOCK



TECHNICAL DATA

ITEM CODE	SIZE	LENGTH	WIDTH	HEIGHT	PCS. IN INNER	PCS. IN OUTER
LAA1231	13mm	188	22	13	10	100
LAA1236	19mm	188	22	19	10	100
LAA1241	23mm	188	22	23	10	100

FEATURES:-

- Zinc Cast body.

Finish Available : EB, NP

REBATE SET FOR 3 LEVER DEAD LOCK



TECHNICAL DATA

ITEM CODE	SIZE	LENGTH	WIDTH	HEIGHT	PCS. IN INNER	PCS. IN OUTER
LAA1232	13mm	155	26	13	10	100
LAA1237	19mm	155	26	19	10	100
LAA1242	23mm	155	26	23	10	100

FEATURES:-

- Zinc Cast body.

Finish Available : EB, NP

* Note : All Dimensions are in mm.

REBATE SET FOR 5 LEVER SASH LOCKS, EURO AND OVAL PROFILE CYLINDER LOCKS



TECHNICAL DATA

ITEM CODE	SIZE	LENGTH	WIDTH	HEIGHT	PCS. IN INNER	PCS. IN OUTER
LAA1233	13mm	190	28	13	10	100
LAA1238	19mm	190	28	19	10	100
LAA1243	23mm	190	28	23	10	100

FEATURES:-

- Zinc Cast body.

Finish Available : EB, NP

REBATE SET FOR 5 LEVER DEAD LOCKS, EURO AND OVAL PROFILE CYLINDER DEAD LOCKS



TECHNICAL DATA

ITEM CODE	SIZE	LENGTH	WIDTH	HEIGHT	PCS. IN INNER	PCS. IN OUTER
LAA1234	13mm	161	45	15	10	100
LAA1239	19mm	161	45	21	10	100
LAA1244	23mm	161	45	25	10	100

FEATURES:-

- Zinc Cast body.

Finish Available : EB, NP

* Note : All Dimensions are in mm.



KEY BLANKS



LAA1105
3 Lever Lock Blank Key



LAA1500
5 Lever Lock Blank Key



LAA1031
Rim Lock Blank Key



LAA1006
Press Lock Contract Blank Key



LAA1000
Press Lock Blank Key



GBLK1201
Rack Bolt Key

SPARE FOR BS 5 LEVER LOCK



LAA5507
Face Plate / Strike Plate
5 Lever Dead Lock



LAA5501
Face Plate / Strike Plate
5 Lever Sash Lock

SPARE FOR EURO PROFILE & 5 LEVER LOCKS



LAA5034

Face Plate / Strike Plate
Euro Profile Dead Lock



LAA5009

Face Plate / Strike Plate
Euro Profile Sash Lock

SPARE FOR 3 LEVER LOCKS



LAA1434

Face Plate / Strike Plate
3 Lever Dead Lock



LAA1450

Face Plate / Strike Plate
3 Lever Sash Lock



LAA1422

Face Plate / Strike Plate
Bathroom Lock



LAA1101

Striker Plate only W/O
Centre Bar & Reduce Lip
3 Lever Lock

SPARE FOR TUBULAR LATCHES



LAA0907

Face Plate / Strike Plate
Tubular Dead Bolt



LAA0139

Face Plate / Strike Plate
Arch. Tubular Latch



Note

A series of horizontal dotted lines for writing.