



Garg



Field Gate & Fencing Hardware

Visit us at : www.garglocks.co.in

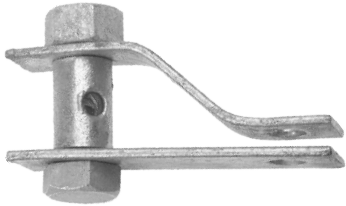


Note

- 1. _____
- 2. _____
- 3. _____
- 4. _____
- 5. _____
- 6. _____
- 7. _____
- 8. _____
- 9. _____
- 10. _____
- 11. _____
- 12. _____
- 13. _____
- 14. _____
- 15. _____
- 16. _____
- 17. _____
- 18. _____
- 19. _____
- 20. _____



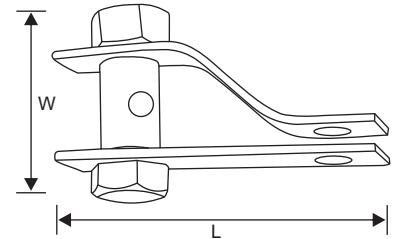
6002 : MILD STEEL FERRULE LOCKING STRAINER



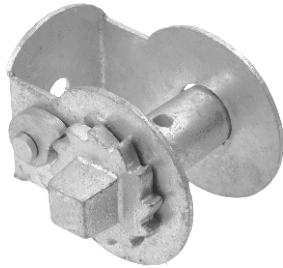
TECHNICAL DATA

ITEM CODE	LENGTH	WIDTH	THICKNESS	BOLT NO.	WT/PCS	PCS. IN INNER	PCS. IN OUTER
MMIH6002090	93	53	2.6	M12	0.174	25	100

FINISH AVAILABLE : BZP, EXB ,HSG,DUROSIL



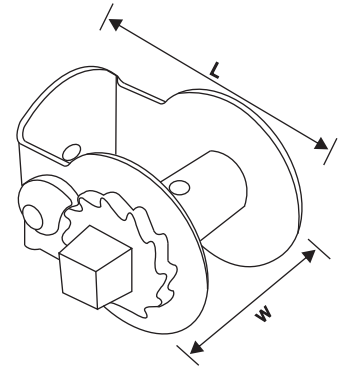
1856 : MILD STEEL RATCHET STRAINER



TECHNICAL DATA

ITEM CODE	LENGTH	WIDTH	THICKNESS	WT/PCS	PCS. IN INNER	PCS. IN OUTER
MMIH1856080	80	82	2.0	0.430	10	50

FINISH AVAILABLE : BZP, EXB ,HSG,DUROSIL



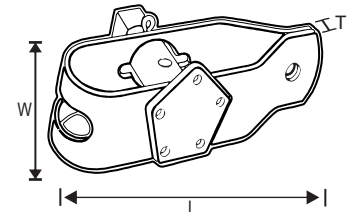
1845 : MILD STEEL LARGE RADISSEURS



TECHNICAL DATA

ITEM CODE	LENGTH	WIDTH	THICKNESS	WT/PCS	PCS. IN INNER	PCS. IN OUTER
MGFI1845XXX	127	38	2.5	0.393	50	50
MGFI1846XXX	127	38	3.0	0.430	50	50

FINISH AVAILABLE : BZP, EXB ,HSG,DUROSIL





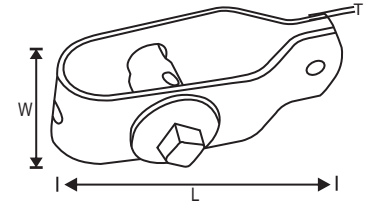
1850 : MILD STEEL SMALL RADISSEURS



TECHNICAL DATA

ITEM CODE	LENGTH	WIDTH	THICKNESS	WT/PCS	PCS. IN INNER	PCS. IN OUTER
MGFI1850XXX	102	32	2.5	0.214	50	50

FINISH AVAILABLE : BZP, EXB ,HSG,DUROSIL



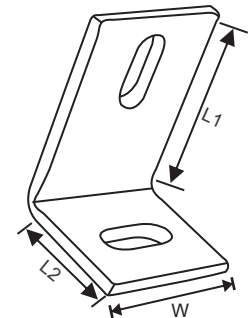
1910 : MILD STEEL ANGLE CLEATS



TECHNICAL DATA

ITEM CODE	LENGTH	WIDTH	THICKNESS	BOLT SIZE	WT/PCS	PCS. IN INNER	PCS. IN OUTER
MGFI1910038	40x40	38	5.0	20x11	0.093	20	200
MGFI1910040	40x65	38	5.0	20x11	0.119	10	150
MGFI1910050	50x50	50	5.0	30x11	0.152	10	100
MGFI1910075	40x75	40	6.0	30x11	0.191	10	80
MGFI1910125	50x75	50	6.0	30x11	0.264	10	60

FINISH AVAILABLE : BZP, EXB ,HSG,DUROSIL



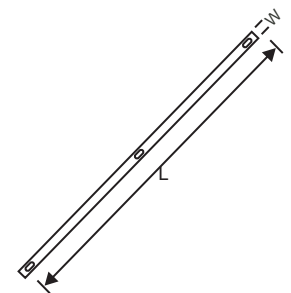
1950 : MILD STEEL STRETCHER BARS



TECHNICAL DATA

ITEM CODE	LENGTH	WIDTH	THICKNESS	SLOT SIZE	SLOT POSITION	WT/PCS	PCS. IN OUTER
MGFI1950450	460	25	5.0	20x11	200	0.422	10
MGFI1950900	920	20	5.0	20x11	430	0.690	10
MGFI1950950	950	25	5.0	20x11	430	0.878	10
MGFI1951400	1410	20	5.0	20x11	680	1.410	10

FINISH AVAILABLE : BZP, EXB ,HSG, DUROSIL





1502 : MILD STEEL WEATHER BAR

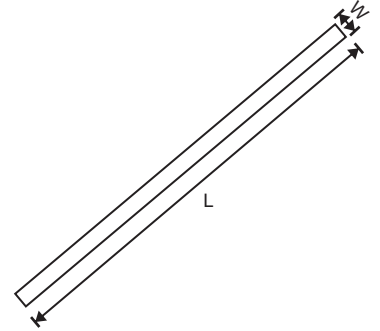


TECHNICAL DATA

ITEM CODE	LENGTH	WIDTH	THICKNESS	WT/PCS	PCS. IN OUTER
MGFI2506140	1000	25	5.0	0.990	10
MGFI2505180	2000	25	6.0	1.177	10
MGFI3006140	1000	30	6.0	1.325	10
MGFI3006180	2000	30	5.0	1.177	10

AVAILABLE LENGHT : UP TO 2 Mtr

FINISH AVAILABLE : EXB ,HSG, DUROSIL



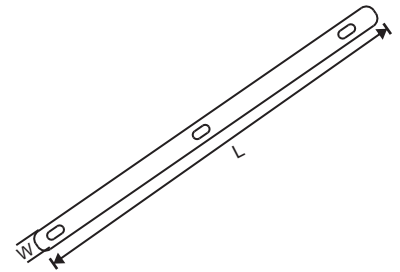
1418 : MILD STEEL BARBED WIRE SPACERS



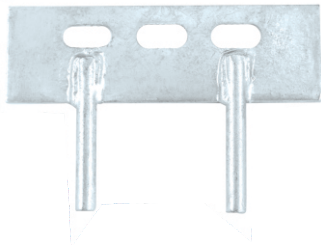
TECHNICAL DATA

ITEM CODE	LENGTH	WIDTH	THICKNESS	BOLT SIZE	WT/PCS	PCS. IN INNER	PCS. IN OUTER
MMIH1418460	460	25	5.0	20X11	0.406	10	40

FINISH AVAILABLE : BZP, EXB, HSG,DUROSIL



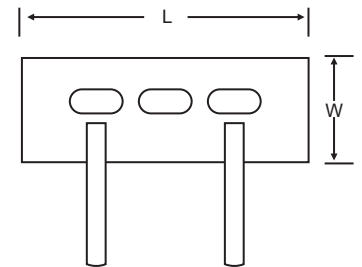
19912 : MILD STEEL GRAVEL CLEAT



TECHNICAL DATA

ITEM CODE	LENGTH	WIDTH	THICKNESS	PIN DIA	SHOOT SIZE	WT/PCS	PCS. IN INNER	PCS. IN OUTER
MGFI1951150	152	50	5.0	10	24x11	0.312	10	50
MGFI1951300	306	50	5.0	10	28x12	0.615	5	30

FINISH AVAILABLE : EXB ,HSG,DUROSIL





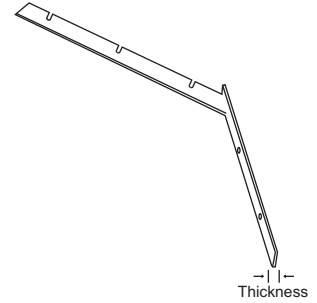
5002 : MILD STEEL BARBED WIRE BRACKET- FRONT FACE FIXING



TECHNICAL DATA

ITEM CODE	LENGTH	WIDTH	THICKNESS	SCREW COACH	WT/PCS	PCS. IN INNER	PCS. IN OUTER
MGFI5002381	730	38	6.0	10X75	1.230	5	5

FINISH AVAILABLE : BZP, EXB ,HSG,DUROSIL



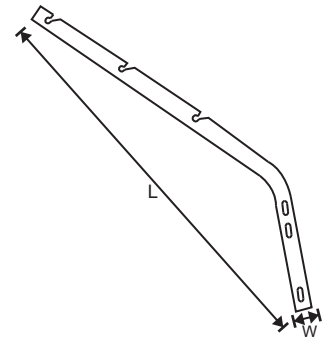
5002 : MILD STEEL BARBED WIRE BRACKET- SIDE FACE FIXING



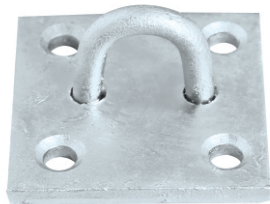
TECHNICAL DATA

ITEM CODE	LENGTH	WIDTH	THICKNESS	WT/PCS	PCS. IN INNER	PCS. IN OUTER
MGFI5003381	715	30	6.0	0.933	5	5

FINISH AVAILABLE : BZP, EXB ,HSG,DUROSIL



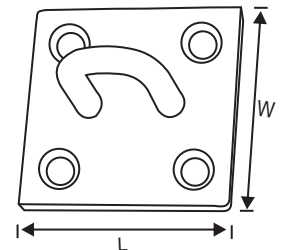
1882 : MILD STEEL STAPLE ON PLATE



TECHNICAL DATA

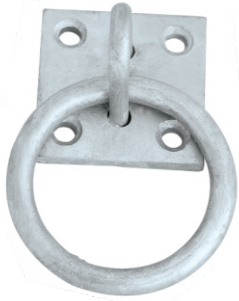
ITEM CODE	LENGTH	WIDTH	THICKNESS	SCREW NO.	WT/PCS	PCS. IN INNER	PCS. IN OUTER	PCS. IN PALLET
MGFI1882050	50	50	5.0	10	0.104	10	200	4800

FINISH AVAILABLE : BZP,EXB ,HSG,DUROSIL





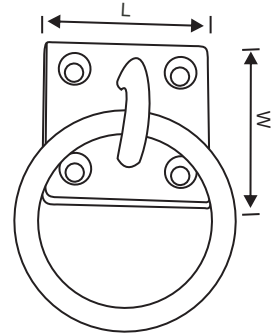
1884 : MILD STEEL RING ON PLATE



TECHNICAL DATA

ITEM CODE	LENGTH	WIDTH	THICKNESS	SCREW NO.	WT/PCS	PCS. IN INNER	PCS. IN OUTER	PCS. IN PALLET
MGF1884050	50	50	5.0	10	0.180	10	100	4000

FINISH AVAILABLE : BZP, EXB, HSG, DUROSIL



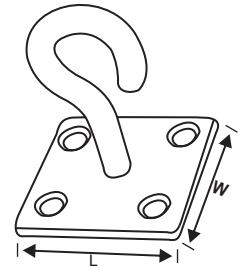
1880 : MILD STEEL HOOK ON PLATE



TECHNICAL DATA

ITEM CODE	LENGTH	WIDTH	THICKNESS	SCREW NO.	WT/PCS	PCS. IN INNER	PCS. IN OUTER	PCS. IN PALLET
MGF1880050	50	50	5.0	10	0.129	10	140	5040

FINISH AVAILABLE : BZP, EXB, HSG, SC



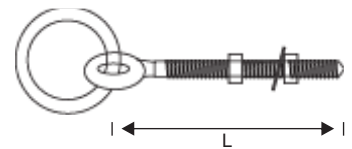
1886: MILD STEEL MANGER RING ON EYE BOLT



TECHNICAL DATA

ITEM CODE	LENGTH	RING DIA	RING WIRE DIA	RODE DIA	WT/PCS	PCS. IN INNER	PCS. IN OUTER	PCS. IN PALLET
MGF1886125	135	68	8	8	0.175	10	100	3600
MGF1886175	185	68	8	8	0.196	10	80	3360
MGF1886200	235	68	8	8	0.218	5	60	2160
MGF1886275	285	68	8	8	0.236	5	50	1500

FINISH AVAILABLE : BZP, EXB, HSG, DUROSIL





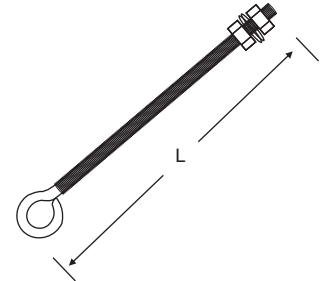
452 : MILD STEEL WELDED EYE BOLTS



TECHNICAL DATA

ITEM CODE	LENGTH	THREAD	ROD DIA	WT/PCS	PCS. IN INNER	PCS. IN OUTER	PCS. IN PALLET
MGFI0452150	150	M6	8	0.109	10	160	3840
MGFI0452200	200	M8	8	0.131	10	140	5600
MGFI0452250	250	M10	8	0.152	10	120	3840
MGFI0452300	300	M10	8	0.174	10	100	3600

FINISH AVAILABLE : BZP, EXB ,HSG,DUROSIL



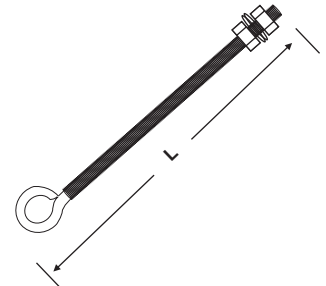
453 : MILD STEEL UNWELDED EYE BOLTS



TECHNICAL DATA

ITEM CODE	LENGTH	THREAD	ROD DIA	WT/PCS	PCS. IN INNER	PCS. IN OUTER	PCS. IN PALLET
MGFI0453150	150	M6	8	0.109	10	160	3840
MGFI0453200	200	M8	8	0.131	10	140	5600
MGFI0453250	250	M10	8	0.152	10	120	3840
MGFI0453300	300	M10	8	0.174	10	100	3600

FINISH AVAILABLE : BZP, EXB ,HSG,DUROSIL



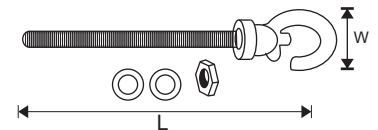
850 : MILD STEEL SINGLE POST HOOK



TECHNICAL DATA

ITEM CODE	LENGTH	WIDTH	BOLT	WT/PCS	PCS. IN INNER	PCS. IN OUTER
MGFI0850150	160	44	M10	0.164	10	100

FINISH AVAILABLE : BZP, EXB ,HSG,DUROSIL





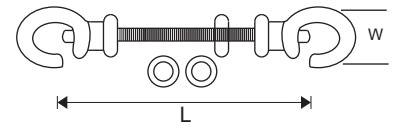
851 : MILD STEEL DOUBLE POST HOOK



TECHNICAL DATA

ITEM CODE	LENGTH	WIDTH	BOLT	WT/PCS	PCS. IN INNER	PCS. IN OUTER
MGFI0851150	160	44	M10	0.309	10	60

FINISH AVAILABLE : BZP, EXB ,HSG,DUROSIL



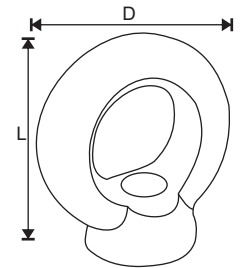
454 : CAST IRON LOOP NUT



TECHNICAL DATA

ITEM CODE	LENGTH	DIA	WT/PCS	PCS. IN INNER	PCS. IN OUTER
MGFI0454M10	42	37	0.066	20	200

FINISH AVAILABLE : BZP, EXB ,HSG,DUROSIL



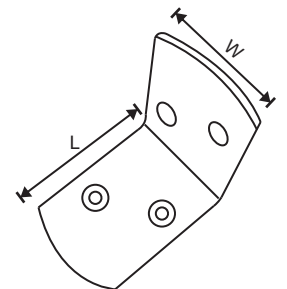
2404 : MILD STEEL BALUSTRADE BRACKET



TECHNICAL DATA

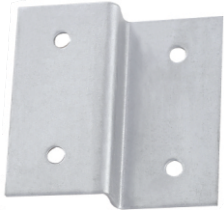
ITEM CODE	LENGTH	WIDTH	THICKNESS	SCREW NO.	WT/PCS	PCS. IN INNER	PCS. IN OUTER
MGFI2404040	40x40	30	2.0	6	0.034	50	500

FINISH AVAILABLE : BZP, EXB ,HSG,DUROSIL





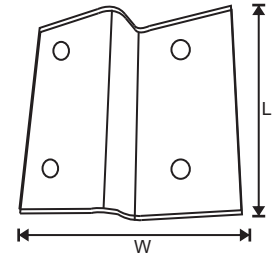
9604 : MILD STEEL TRELLIS CLIP



TECHNICAL DATA

ITEM CODE	LENGTH	WIDTH	THICKNESS	SCREW NO.	WT/PCS	PCS. IN INNER	PCS. IN OUTER
MIRN9604060	59	59	1.5	8	0.048	25	400

FINISH AVAILABLE : BZP, EXB ,GALV



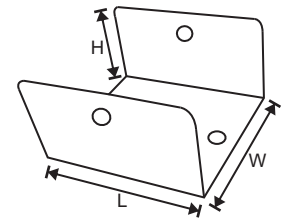
473-474-475 : MILD STEEL FENCING PANEL CLIPS



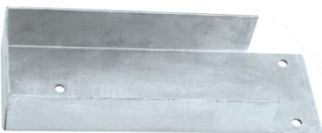
TECHNICAL DATA

ITEM CODE	LENGTH	WIDTH	HEIGHT	THICKNESS	WT/PCS	PCS. IN INNER	PCS. IN OUTER
MGFI0473034	50	34	27	0.8	0.025	50	500
MGFI0474045	50	45	27	0.8	0.029	50	500
MGFI0475050	50	52	24	0.8	0.029	50	500

FINISH AVAILABLE : BZP, EXB ,HSG,DUROSIL



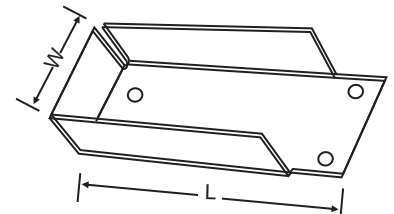
1164 : MILD STEEL GRAVEL BOARD BRACKET



TECHNICAL DATA

ITEM CODE	LENGTH	WIDTH	THICKNESS	SCREW NO.	WT/PCS	PCS. IN OUTER
MGFI1164150	152	55	1.6	8	0.182	60

FINISH AVAILABLE : BZP, EXB ,HSG,DUROSIL





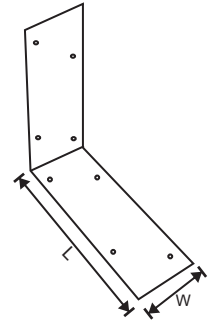
4025 : MILD STEEL BIRD MOUTH



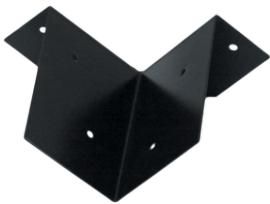
TECHNICAL DATA

ITEM CODE	LENGTH	WIDTH	THICKNESS	HOLE DIA	WT/PCS	PCS. IN OUTER
MMIH4025100	250	90	0.7	4.2	0.241	60
MMIH4025150	250	140	0.75	4.2	0.413	40

FINISH AVAILABLE : BZP, EXB,GALV



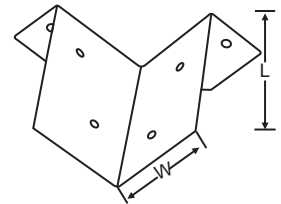
75002 : MILD STEEL ARRIS RAIL REPAIR BRACKET



TECHNICAL DATA

ITEM CODE	LENGTH	WIDTH	THICKNESS	HOLE DIA	WT/PCS	PCS. IN OUTER
MMIH7502100	111	70	0.8	5	0.110	100
MMIH7502220	226	60	0.8	5	0.168	80
MMIH7502350	322	60	0.8	5	0.270	60

FINISH AVAILABLE : BZP, EXB ,GALV



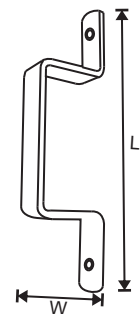
8344 : MILD STEEL SLIP RAIL HOLDER



TECHNICAL DATA

ITEM CODE	LENGTH	WIDTH	THICKNESS	SCREW NO.	WT/PCS	PCS. IN OUTER
MGFI8344050	235	62	6.0	10	0.365	10

FINISH AVAILABLE : BZP, EXB ,HSG,DUROSIL





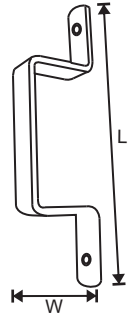
8344 : MILD STEEL SLIP RAIL HOLDER



TECHNICAL DATA

ITEM CODE	LENGTH	WIDTH	THICKNESS	SCREW NO.	WT/PCS	PCS. IN OUTER
MGFI8344075	235	75	6.0	10	0.431	10

FINISH AVAILABLE : BZP, EXB ,HSG,DUROSIL



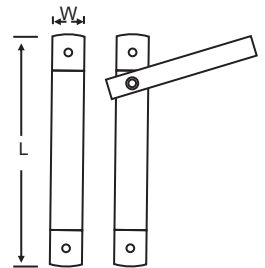
1897 : MILD STEEL SLIP RAIL BRACKET SET



TECHNICAL DATA

ITEM CODE	LENGTH	WIDTH	THICKNESS	SCREW NO.	WT/PCS	PCS. IN INNER	PCS. IN OUTER
MGFI1897200	191	32	3.0	10	0.360	5	50

FINISH AVAILABLE : BZP, EXB ,HSG,DUROSIL



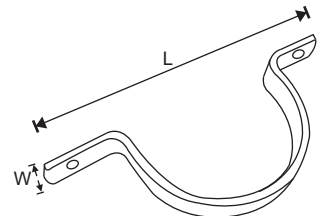
8346 : MILD STEEL SLIP RAIL HALF ROUND HOLDER



TECHNICAL DATA

ITEM CODE	LENGTH	WIDTH	THICKNESS	SCREW NO.	WT/PCS	PCS. IN OUTER
MGFI8346XXX	250	25	6.0	10	0.394	10

FINISH AVAILABLE : BZP, EXB ,HSG,DUROSIL





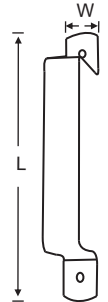
851A : MILD STEEL PANEL SECURITY BRACKET



TECHNICAL DATA

ITEM CODE	LENGTH	WIDTH	THICKNESS	SCREW NO.	WT/PCS	PCS. IN OUTER
MGFI851AXXX	237	40	1.6	8	0.133	80

FINISH AVAILABLE : BZP, EXB ,HSG,DUROSIL



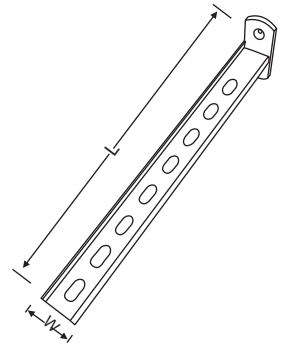
9102 : MILD STEEL EXTENSION BASES



TECHNICAL DATA

ITEM CODE	LENGTH	WIDTH	THICKNESS	SCREW NO.	SLOT SIZE	WT/PCS	PCS. IN INNER	PCS. IN OUTER
MMIH910225	225	25	5.0	8	16x8	0.166	10	100

FINISH AVAILABLE : BZP, EXB ,HSG,DUROSIL



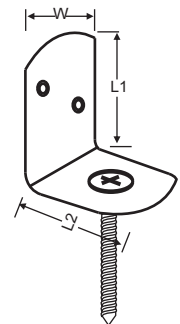
4568 : MILD STEEL SCREW IN PANEL CLIP



TECHNICAL DATA

ITEM CODE	LENGTH	WIDTH	THICKNESS	SCREW NO.	WT/PCS	PCS. IN INNER	PCS. IN OUTER
MGFI4568035	34x38	30	2.0	14x48	0.045	50	400

FINISH AVAILABLE : BZP, EXB ,HSG,DUROSIL



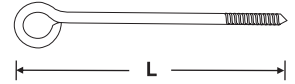


412 : MILD STEEL VINE EYES TO SCREW



TECHNICAL DATA

ITEM CODE	LENGTH	WIRE DIA	WT/PCS	PCS. IN INNER	PCS. IN OUTER
MMIH0412075	86	3.85	0.011	100	1000
MMIH0412100	111	3.85	0.013	100	1000
MMIH0412125	136	3.85	0.015	100	1000
MMIH0412150	160	3.85	0.017	100	1000



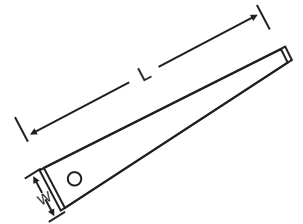
FINISH AVAILABLE : ZP, ZPYP, EB

9032 : MILD STEEL VINE EYE TO DRIVE



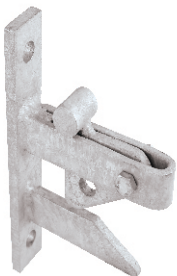
TECHNICAL DATA

ITEM CODE	LENGTH	WIDTH	THICKNESS	WT/PCS	PCS. IN INNER	PCS. IN OUTER	PCS. IN PALLET
MMIH9032075	75	12	2.5	0.011	50	500	30000
MMIH9032100	100	12	2.5	0.014	50	500	30000
MMIH9032125	125	16	2.5	0.022	50	500	22500
MMIH9032150	150	16	2.5	0.027	50	500	22500



FINISH AVAILABLE : BZP, EXB

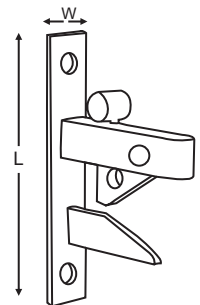
1800GC : MILD STEEL SELF LOCKING GATE CATCH ONLY



TECHNICAL DATA

ITEM CODE	LENGTH	WIDTH	THICKNESS	COACH SCREW	WT/PCS	PCS. IN INNER	PCS. IN OUTER	PCS. IN PALLET
MGF11801175	180	32	6.0	10x75	0.780	5	20	1000

FINISH AVAILABLE - BZP, EXB, HSG, DUROSIL





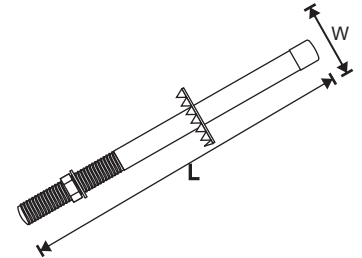
1800SS : MILD STEEL SELF LOCKING GATE CATCH STRIKER - STRAIGHT



TECHNICAL DATA

ITEM CODE	LENGTH	WIDTH	ROD DIA	WT/ PCS	PCS. IN INNER	PCS. IN OUTER	PCS. IN PALLET
MGFI1804191	185	40	12.5	0.240	10	80	2400

FINISH AVAILABLE - EXB, BZP, EXB,HSG, DUROSIL



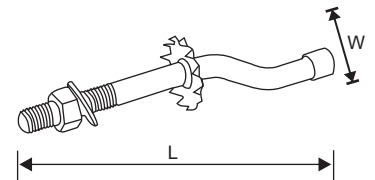
1800CS : MILD STEEL SELF LOCKING GATE CATCH STRIKER - CRANKED



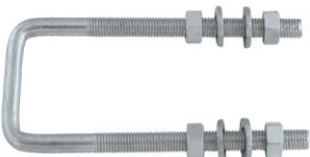
TECHNICAL DATA

ITEM CODE	LENGTH	WIDTH	ROD DIA	WT/ PCS	PCS. IN INNER	PCS. IN OUTER	PCS. IN PALLET
MGFI1802191	185	40	12.5	0.233	10	80	2400

FINISH AVAILABLE - BZP, EXB,HSG, DUROSIL



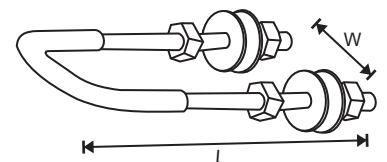
1800DLS : MILD STEEL STRIKER DOUBLE LEG



TECHNICAL DATA

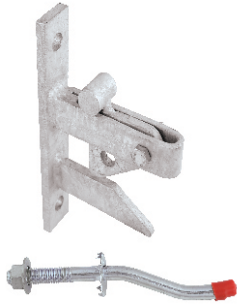
ITEM CODE	LENGTH	WIDTH	ROD DIA	THREAD	WT/ PCS	PCS. IN INNER	PCS. IN OUTER	PCS. IN PALLET
MGFI1848170	170	60	11.6	M12	0.362	5	20	600

FINISH AVAILABLE : BZP, EXB ,HSG,DUROSIL





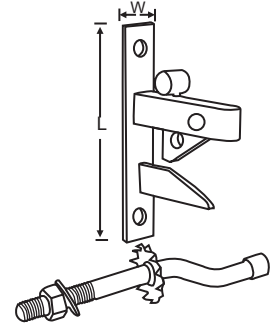
1800 : MILD STEEL SELF LOCKING GATE CATCH WITH STRIKER



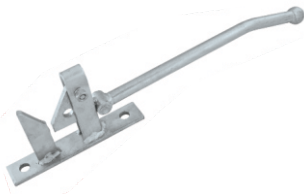
TECHNICAL DATA

DESCRIPTION	PCS. IN OUTER
ITEM CODE	MGFI1801175
SELF LOCKING GATE CATCH (1800GC)	1
CRANKED STRICKER ONLY (1800CS)	1
COACH SCREW (M10X75)	2
TOTAL WT. SET	1.080

FINISH AVAILABLE - EXB, BZP, EXB,HSG, DUROSIL



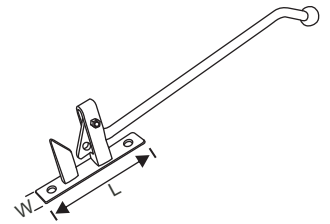
1805 : MILD STEEL HUNTING TYPE GATE CATCH



TECHNICAL DATA

ITEM CODE	LENGTH	WIDTH	ROD DIA	THICKNESS	COACH SCREW	WT/ PCS	PCS. IN INNER	PCS. IN OUTER	PCS. IN PALLET
MGFI1805XXX	180	32	16.0	6.0	10x75	1.360	2	20	400

FINISH AVAILABLE : EXB, BZP, HSG, DUROSIL



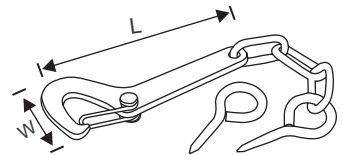
1000 : MILD STEEL SAFETY GATE HOOKS AND EYES



TECHNICAL DATA

ITEM CODE	LENGTH	WIDTH	THICKNESS	WT/ PCS	PCS. IN INNER	PCS. IN OUTER	PCS. IN PALLET
MGFI1000150	153	60	6.0	0.300	5	60	2880

FINISH AVAILABLE : BZP, EXB ,HSG, DUROSIL





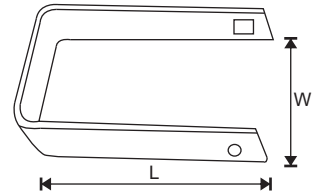
1810 : MILD STEEL THROVOVER GATE LOOPS



TECHNICAL DATA

ITEM CODE	LENGTH	WIDTH	THICKNESS	CARRIAGE BOLT	WT/ PCS	PCS. IN INNER	PCS. IN OUTER
MGFI1810175	170	80	5.0	M10	0.462	5	40

FINISH AVAILABLE : BZP, EXB ,HSG,DUROSIL



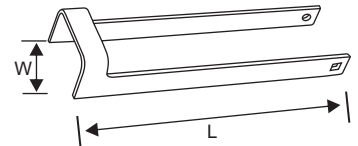
1810 : MILD STEEL THROVOVER GATE LOOPS



TECHNICAL DATA

ITEM CODE	LENGTH	WIDTH	THICKNESS	CARRIAGE BOLT	WT/ PCS	PCS. IN INNER	PCS. IN OUTER	PCS. IN PALLET
MGFI1810350	360	80	5.0	M10	0.970	2	10	340
MGFI1810450	410	80	5.0	M10	1.200	2	10	240
MGFI1810500	490	80	5.0	M10	1.324	2	10	240

FINISH AVAILABLE : BZP, EXB ,HSG,DUROSIL



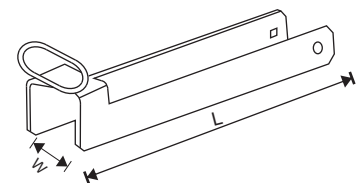
1816 : MILD STEEL THROVOVER GATE LOOP WITH LIFT HANDLE



TECHNICAL DATA

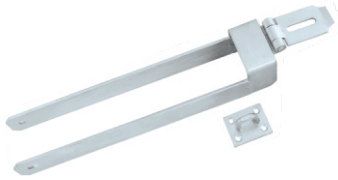
ITEM CODE	LENGTH	WIDTH	THICKNESS	CARRIAGE BOLT	WT/ PCS	PCS. IN OUTER	PCS. IN PALLET
MGFI1816350	458	78	6.0	M10	2.592	5	150

FINISH AVAILABLE : BZP, EXB ,HSG,DUROSIL





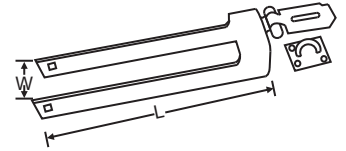
1816 LHS : MILD STEEL THROVOVER GATE LOOP WITH LOCKING HASP & STAPLE



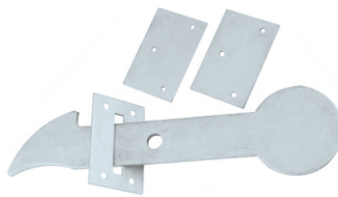
TECHNICAL DATA

ITEM CODE	LENGTH	WIDTH	THICKNESS	CARRIAGE BOLT	WT/ PCS	PCS. IN OUTER
MGFI2816450	456	80	6.0	M10&12	2.710	2

FINISH AVAILABLE : BZP, EXB ,HSG,DUROSIL



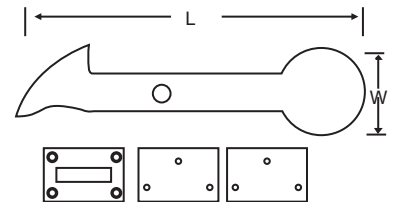
9002 : MILD STEEL GRAVITY CATCH FOR WOODEN POST



TECHNICAL DATA

ITEM CODE	LENGTH	WIDTH	THICKNESS	WT/ PCS	PCS. IN INNER	PCS. IN OUTER
MGFI18329275	270	70	6.0	0.689	5	25

FINISH AVAILABLE : BZP, EXB ,HSG,DUROSIL



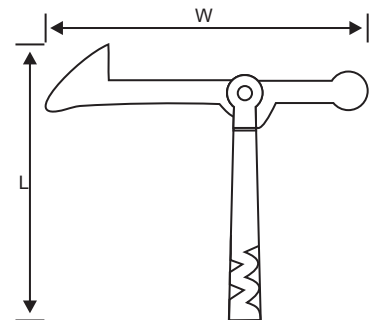
1870 : CAST GRAVITY CATCH



TECHNICAL DATA

ITEM CODE	LENGTH	WIDTH	THICKNESS	CARRIAGE BOLT	WT/ PCS	PCS. IN INNER	PCS. IN OUTER	PCS. IN PALLET
MGFI1870240	240	320	20	M12	3.250	2	4	280

FINISH AVAILABLE : EXB ,HSG,DUROSIL





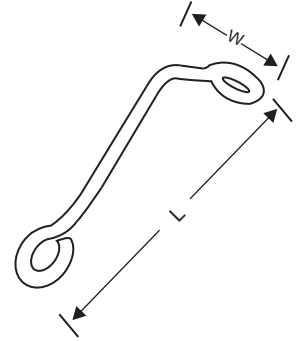
406 : MILD STEEL DEVON GATE DROPS



TECHNICAL DATA

ITEM CODE	LENGTH	WIDTH	THICKNESS	WT/PCS	PCS. IN INNER	PCS. IN OUTER
MGFI0406152	150	80	7.8	0.112	10	100

FINISH AVAILABLE : BZP, EXB ,HSG,DUROSIL



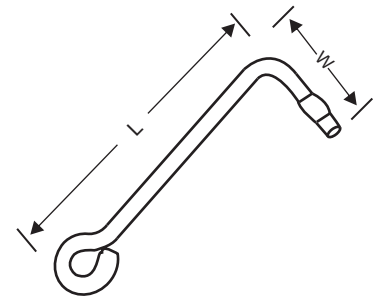
G0122 : CAST IRON ROUND GATE DROPS



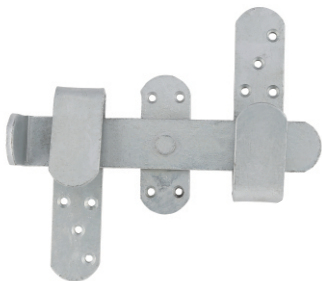
TECHNICAL DATA

ITEM CODE	LENGTH	WIDTH	RAD DIA	WT/PCS	PCS. IN INNER	PCS. IN OUTER
MGFI0122150	149	51	8.0	0.085	10	100

FINISH AVAILABLE : BZP, EXB ,HSG,DUROSIL



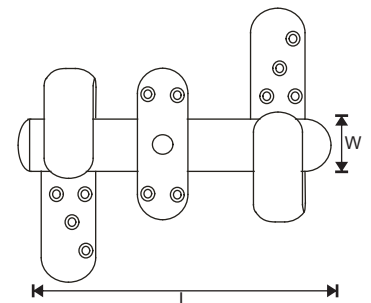
1830 : MILD STEEL KICK OVER GATE LATCH



TECHNICAL DATA

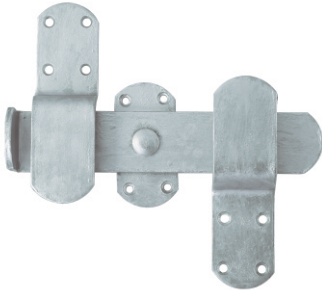
ITEM CODE	LENGTH	WIDTH	THICKNESS	SCREW NO.	WT/PCS	PCS. IN INNER	PCS. IN OUTER
MGFI1830225	238	40	6.0	12	1.415	5	20

FINISH AVAILABLE : BZP, EXB ,HSG,DUROSIL





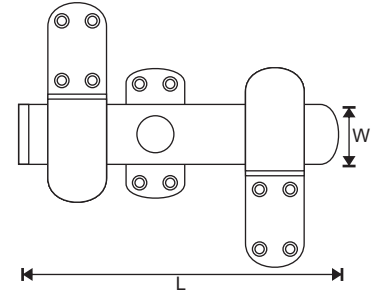
1830A : MILD STEEL KICK OVER STABLE LATCH



TECHNICAL DATA

ITEM CODE	LENGTH	WIDTH	THICKNESS	SCREW NO.	WT/ PCS	PCS. IN INNER	PCS. IN OUTER
MGFI1831225	250	50	6.0	10	1.610	2	10

FINISH AVAILABLE : BZP, EXB ,HSG,DUROSIL



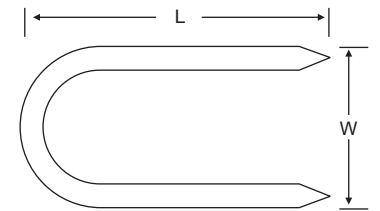
6252: MILD STEEL DOOR STAPLES



TECHNICAL DATA

ITEM CODE	LENGTH	WIDTH	DIA	WT/ PCS	PCS. IN INNER	PCS. IN OUTER	PCS. IN PALLET
MGFI0408063	65	37	6	0.030	50	500	18000
MGFI0408075	75	41	8	0.063	50	250	9000
MGFI0408100	110	41	8	0.084	20	200	9000

FINISH AVAILABLE : BZP, EXB ,HSG,DUROSIL



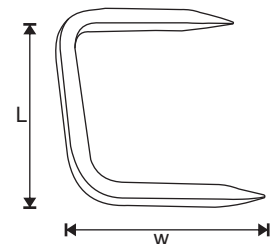
1820 : MILD STEEL SQUARE SECTION GATE STAPLE TO DRIVE



TECHNICAL DATA

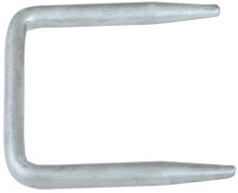
ITEM CODE	LENGTH	WIDTH	SQUARE	WT/ PCS	PCS. IN INNER	PCS. IN OUTER
MGFI4127100	125	104	10	0.215	20	80

FINISH AVAILABLE : BZP, EXB ,HSG,DUROSIL





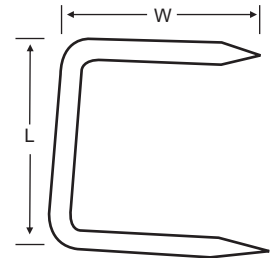
1820 E : MILD STEEL STAPLE TO DRIVE



TECHNICAL DATA

ITEM CODE	LENGTH	WIDTH	SQUARE	WT/ PCS	PCS. IN INNER	PCS. IN OUTER
MGFI1823100	125	104	10	0.215	20	60

FINISH AVAILABLE : BZP, EXB ,HSG,DUROSIL



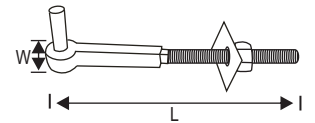
1806 : MILD STEEL HOOK TO BOLT



TECHNICAL DATA

ITEM CODE	LENGTH	WIDTH	PIN DIA	THREAD	WT/ PCS	PCS. IN INNER	PCS. IN OUTER	PCS. IN PALLET
MGFI1806250	280	42	19	3/4"	0.885	5	20	960
MGFI1806327	330	42	19	3/4"	1.144	5	20	640

FINISH AVAILABLE : BZP, EXB ,HSG,DUROSIL



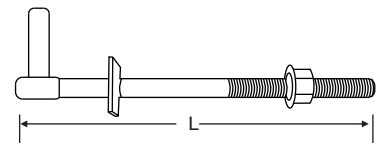
1896 : MILD STEEL GATE HANGER TO BOLT



TECHNICAL DATA

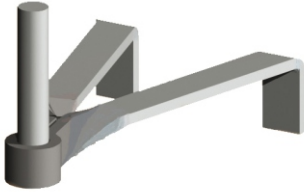
ITEM CODE	LENGTH	WIDTH	THICKNESS	PIN DIA	WT/ PCS	PCS. IN OUTER
MGFI1896200	200	75	19	19	0.850	10
MGFI1896250	260	75	19	19	1.000	10
MGFI1896350	360	75	19	19	1.230	10
MGFI1896400	410	75	19	19	1.300	10
MGFI1896450	460	75	19	19	1.390	10

FINISH AVAILABLE : BZP, EXB ,HSG,DUROSIL





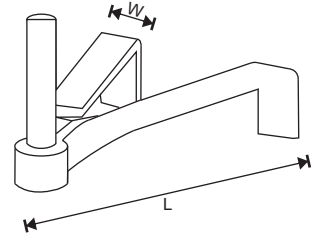
1875 : MILD STEEL HOOK FOR BRICK WORK



TECHNICAL DATA

ITEM CODE	LENGTH	WIDTH	THICKNESS	PIN DIA	WT/ PCS	PCS. IN INNER	PCS. IN OUTER
MGFI1875XXX	160	20	6.0	12.7	0.367	10	50
MGFI1875XXX	275	20	6.0	12.7	0.631	10	30
MGFI1875XXX	160	25	6.0	19.0	0.580	5	20
MGFI1875XXX	275	25	6.0	19.0	0.918	5	15

FINISH AVAILABLE : BZP,EXB ,HSG,DUROSIL



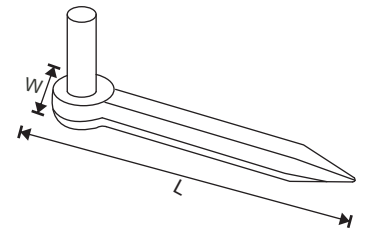
1803 : MILD STEEL HOOK TO DRIVE



TECHNICAL DATA

ITEM CODE	LENGTH	WIDTH	PIN DIA	WT/ PCS	PCS. IN INNER	PCS. IN OUTER	PCS. IN PALLET
MGFI1803200	216	41	19	0.756	5	30	1080

FINISH AVAILABLE : BZP, EXB ,HSG,DUROSIL



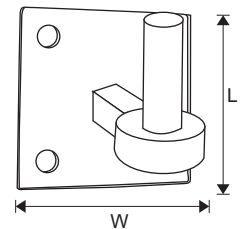
1814A : MILD STEEL HOOK ON SQUARE PLATE



TECHNICAL DATA

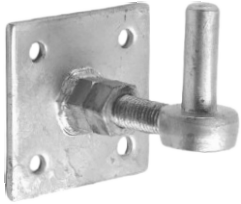
ITEM CODE	LENGTH	WIDTH	THICKNESS	COACH SCREW	WT/ PCS	PCS. IN INNER	PCS. IN OUTER	PCS. IN PALLET
MGFI1834100	100	100	5.0	M10	0.775	5	20	720

FINISH AVAILABLE : BZP, EXB ,HSG,DUROSIL





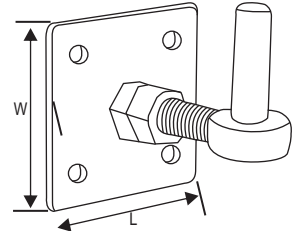
1814AH : MILD STEEL ADJUSTABLE HOOK ON SQUARE PLATE



TECHNICAL DATA

ITEM CODE	LENGTH	WIDTH	THICKNESS	PIN DIA	COACH SCREW	WT/ PCS	PCS. IN INNER	PCS. IN OUTER	PCS. IN PALLET
MGFI1815101	100	100	5.0	19.0	10x75	0.900	5	20	720

FINISH AVAILABLE : BZP, EXB ,HSG,DUROSIL



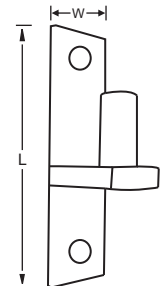
435 : MILD STEEL HOOK ON NARROW PLATE



TECHNICAL DATA

ITEM CODE	LENGTH	WIDTH	THICKNESS	PIN DIA	COACH SCREW	WT/ PCS	PCS. IN INNER	PCS. IN OUTER
MGFI0435200	205	50	8.0	24	M12	1.130	5	15

FINISH AVAILABLE - EXB,BZP,HSG



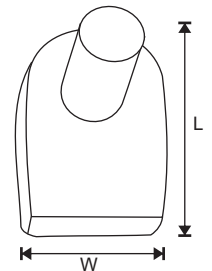
1865H : MILD STEEL GATE HOOK TO WELD (FLAT)



TECHNICAL DATA

ITEM CODE	LENGTH	WIDTH	THICKNESS	PIN DIA	WT/ PCS	PCS. IN INNER	PCS. IN OUTER
MGFI1867012	40	25	10	12	0.093	20	200
MGFI1867016	63	46	16	16	0.400	10	40
MGFI1867019	63	46	16	19	0.440	5	40
MGFI1867022	63	46	16	22	0.479	5	40
MGFI1867024	63	46	16	25	0.503	5	30

FINISH AVAILABLE : EXB ,HSG, DUROSIL





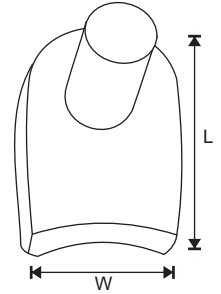
1866H MILD STEEL GATE HOOK TO WELD (RADIUS)



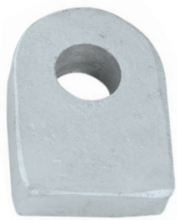
TECHNICAL DATA

ITEM CODE	LENGTH	WIDTH	THICKNESS	PIN DIA	WT/ PCS	PCS. IN INNER	PCS. IN OUTER
MGFI1868012	40	25	10	12	0.093	20	200
MGFI1868016	63	46	16	16	0.400	10	40
MGFI1868019	63	46	16	19	0.440	5	40
MGFI1868022	63	46	16	22	0.479	5	40
MGFI1868024	63	46	16	25	0.503	5	30

FINISH AVAILABLE : EXB ,HSG, DUROSIL



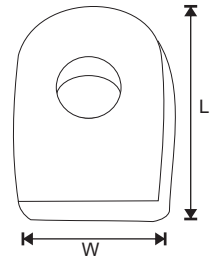
1865E : MILD STEEL GATE EYE TO WELD (FLAT)



TECHNICAL DATA

ITEM CODE	LENGTH	WIDTH	THICKNESS	PIN DIA	WT/ PCS	PCS. IN INNER	PCS. IN OUTER
MGFI1865012	40	25	10	13	0.060	20	250
MGFI1865016	63	46	16	17	0.340	10	60
MGFI1865019	63	46	16	20	0.300	10	60
MGFI1865022	63	46	16	23	0.246	10	60
MGFI1865025	63	46	16	26	0.200	10	60

FINISH AVAILABLE : EXB ,HSG, DUROSIL



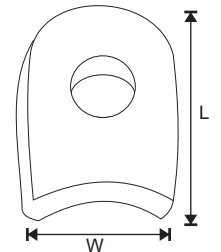
1866E MILD STEEL GATE EYE TO WELD (RADIUS)



TECHNICAL DATA

ITEM CODE	LENGTH	WIDTH	THICKNESS	PIN DIA	WT/ PCS	PCS. IN INNER	PCS. IN OUTER
MGFI1866012	40	25	10	13	0.060	20	250
MGFI1866016	63	46	16	17	0.340	10	60
MGFI1866019	63	46	16	20	0.300	10	60
MGFI1866022	63	46	16	23	0.246	10	60
MGFI1866026	63	46	16	26	0.200	10	25

FINISH AVAILABLE : EXB ,HSG, DUROSIL

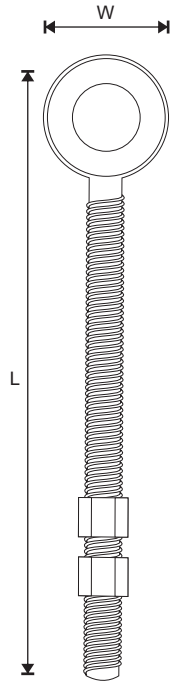




1809 : MILD STEEL FIELD GATE ADJUSTABLE EYE C/W 2 NUTS

TECHNICAL DATA

ITEM CODE	LENGTH	WIDTH	THICKNESS	HOLE DIA	THREAD	WT/ PCS	PCS. IN INNER	PCS. IN OUTER	PCS. IN PALLET
MGF1709100	100	30	12	13	1/2"	0.163	5	100	2400
MGF1709150	150	30	12	13	1/2"	0.200	5	80	1920
MGF1709200	200	30	12	13	1/2"	0.237	5	60	1800
MGF1709250	250	30	12	13	1/2"	0.274	5	60	1800
MGF1710100	100	36	15	17	5/8"	0.231	5	80	1920
MGF1710150	150	36	15	17	5/8"	0.329	5	40	1600
MGF1710200	200	36	15	17	5/8"	0.377	5	40	1280
MGF1710250	250	36	15	17	5/8"	0.425	5	40	1280
MGF1711100	100	42	17.5	20	3/4"	0.437	5	40	1500
MGF1711150	150	42	17.5	20	3/4"	0.513	5	30	1500
MGF1711200	200	42	17.5	20	3/4"	0.589	5	30	1320
MGF1711250	250	42	17.5	20	3/4"	0.665	5	20	960
MGF1711300	300	42	17.5	20	3/4"	0.741	5	20	720
MGF1712100	100	42	17.5	23	3/4"	0.426	5	30	1440
MGF1712150	150	42	17.5	23	3/4"	0.502	5	20	960
MGF1712200	200	42	17.5	23	3/4"	0.578	5	20	960
MGF1712250	250	42	17.5	23	3/4"	0.654	5	20	960
MGF1713300	300	42	17.5	23	3/4"	0.730	5	20	720
MGF1713100	100	56	24	26	1"	0.850	5	5	720
MGF1713150	150	56	24	26	1"	1.008	5	5	640
MGF1713200	200	56	24	26	1"	1.198	5	5	520
MGF1713250	250	56	24	26	1"	1.388	5	5	520
MGF1713300	300	56	24	26	1"	1.578	5	5	520

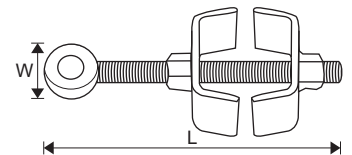
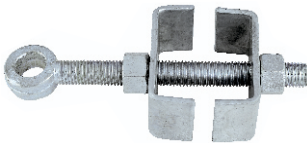


FINISH AVAILABLE : BZP, EXB ,HSG,DUROSIL

1809F : MILD STEEL EYE BOLT WITH 'U' CLIPS

TECHNICAL DATA

ITEM CODE	LENGTH	WIDTH	THICKNESS	COACH SCREW	WT/ PCS	PCS. IN INNER	PCS. IN OUTER
MGF1723250	254	42	6.0	3/4"	1.30	5	5



FINISH AVAILABLE : BZP, EXB ,HSG,DUROSIL



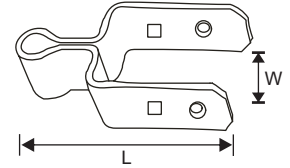
1812AS : MILD STEEL FIELD GATE BOTTOM HINGE



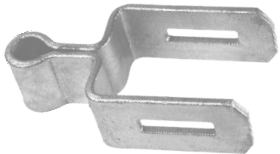
TECHNICAL DATA

ITEM CODE	LENGTH	WIDTH	THICKNESS	WT/ PCS	PCS. IN INNER	PCS. IN OUTER
MGF1832125	180	78	6.0	0.876	5	20

FINISH AVAILABLE : BZP, EXB ,HSG,DUROSIL
ALSO AVAILABLE IN 5MM THICKNESS



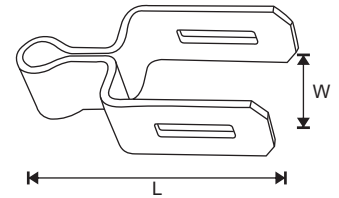
1812AAS :MILD STEEL SLOTTED BAND FOR ADJUSTABLE FIELD GATE HINGE



TECHNICAL DATA

ITEM CODE	LENGTH	WIDTH	THICKNESS	WT/ PCS	PCS. IN INNER	PCS. IN OUTER
MGF1821125	184	77	6.0	0.887	5	20

FINISH AVAILABLE : BZP, EXB ,HSG,DUROSIL
ALSO AVAILABLE IN 5MM THICKNESS



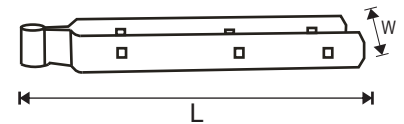
1812 AL : MILD STEEL FIELD GATE HINGE LONG BAND



TECHNICAL DATA

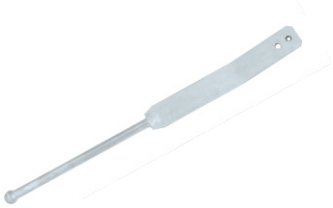
ITEM CODE	LENGTH	WIDTH	THICKNESS	SCREW NO.	WT/ PCS	PCS. IN INNER	PCS. IN OUTER
MGF1825300	330	78	6.0	M10	1.486	2	2
MGF1825450	480	78	6.0	M10	2.274	2	2
MGF1825600	630	78	6.0	M10	3.000	2	2

FINISH AVAILABLE : BZP, EXB ,HSG,DUROSIL
ALSO AVAILABLE IN 5MM THICKNESS





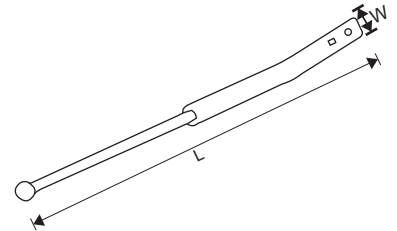
1820A : MILD STEEL SPRING LATCH



TECHNICAL DATA

ITEM CODE	LENGTH	WIDTH	THICKNESS	CARRAGE BOLT	WT/PCS	PCS. IN INNER	PCS. IN OUTER	PCS. IN PALLET
MGFI1826600	590	45	4.0	M8	0.905	5	15	750

FINISH AVAILABLE : BZP, EXB ,HSG,DUROSIL



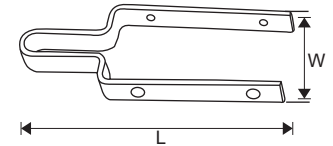
1820B : MILD STEEL SPRING KEEP



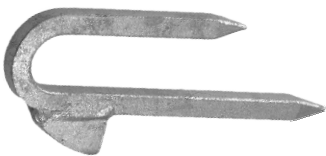
TECHNICAL DATA

ITEM CODE	LENGTH	WIDTH	THICKNESS	SCREW NO.	WT/PCS	PCS. IN INNER	PCS. IN OUTER	PCS. IN PALLET
MGFI1827225	238	76	5.0	12	0.492	5	30	1200

FINISH AVAILABLE : BZP, EXB ,HSG,DUROSIL



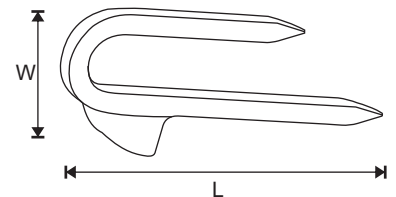
1820C : MILD STEEL SPRING CATCH



TECHNICAL DATA

ITEM CODE	LENGTH	WIDTH	THICKNESS	WT/PCS	PCS. IN INNER	PCS. IN OUTER	PCS. IN PALLET
MGFI1828200	212	60	12.0	0.455	5	30	1440

FINISH AVAILABLE : BZP, EXB ,HSG,DUROSIL





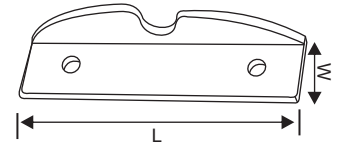
1860 : MILD STEEL CENTRAL CLOSING GATE CATCH



TECHNICAL DATA

ITEM CODE	LENGTH	WIDTH	THICKNESS	SCREW	WT/ PCS	PCS. IN INNER	PCS. IN OUTER
MGFI1860175	151	40	5.0	10	0.350	5	50

FINISH AVAILABLE : BZP, EXB ,HSG, DUROSIL



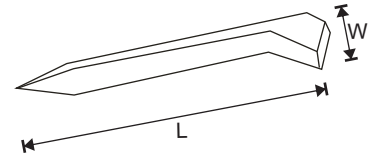
1820D : MILD STEEL SINGLE LEG DRIVER CATCH



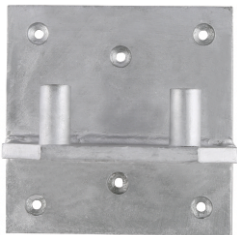
TECHNICAL DATA

ITEM CODE	LENGTH	WIDTH	THICKNESS	WT/ PCS	PCS. IN INNER	PCS. IN OUTER
MGFI1824200	209	38	10	0.342	5	30

FINISH AVAILABLE : BZP, EXB ,HSG,DUROSIL



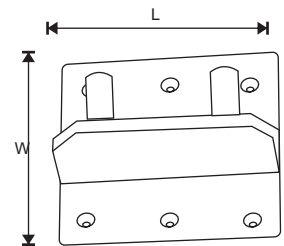
1890B : MILD STEEL FIELD GATE HINGE RISING S. BAND



TECHNICAL DATA

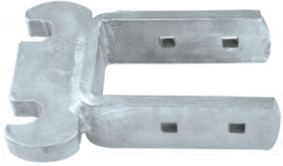
ITEM CODE	LENGTH	WIDTH	THICKNESS	SCREW NO.	WT/ PCS	PCS. IN INNER	PCS. IN OUTER
MGFI1895150	152	152	6.0	14	1.926	2	4

FINISH AVAILABLE : BZP, EXB ,HSG,DUROSIL





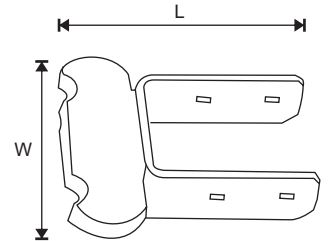
1890C : MILD STEEL FIELD GATE HINGE RISING S. BAND



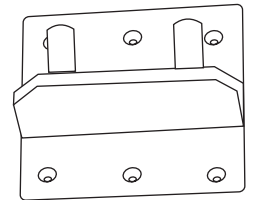
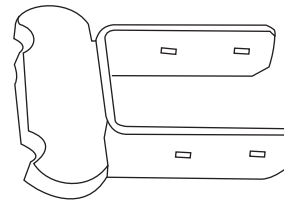
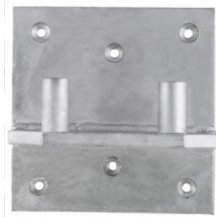
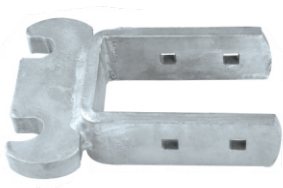
TECHNICAL DATA

ITEM CODE	LENGTH	WIDTH	THICKNESS	THREAD	WT/ PCS	PCS. IN INNER	PCS. IN OUTER
MGFI1896200	200	147	10/22	M12	2.522	2	2

FINISH AVAILABLE : BZP, EXB ,HSG,DUROSIL



1890A : MILD STEEL FIELD GATE HINGE RISING S.BAND



FINISH AVAILABLE : BZP, EXB ,HSG,DUROSIL

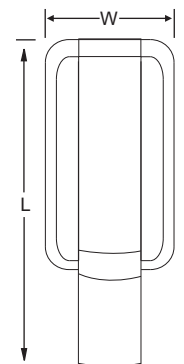
2430 : MILD STEEL POST RAMMER



TECHNICAL DATA

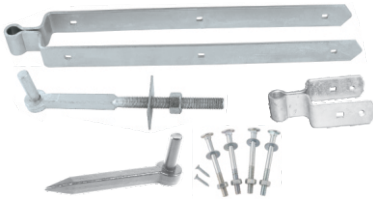
ITEM CODE	LENGTH	WIDTH	BID PIPE DIA	WT/ PCS	PCS. IN INNER	PCS. IN OUTER
MGFI2430150	830	320	150	19.300	1	1

FINISH AVAILABLE - EXB



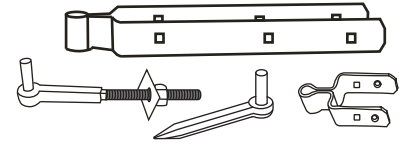


1812 : MILD STEEL STANDARD FIELD GATE SET



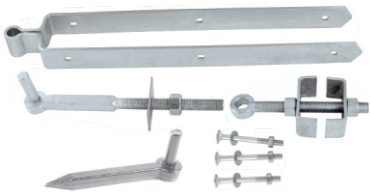
TECHNICAL DATA

DESCRIPTION	300MM	450MM	600MM
ITEM CODE	MGF1812300	MGF1812450	MGF1812600
TOP BAND (1812AL)	1	1	1
BOTTOM BAND (1812AS)	1	1	1
HOOK TO BOLT (1806)	1	1	1
HOOK TO DRIVE(1803)	1	1	1
CARRIAGE BOLT M10x110	3	4	4
SCREW 12x1.25"	2	2	2
TOTAL Wt. SET:	4.514	5.383	6.109



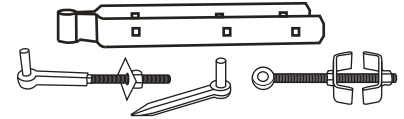
**FINISH AVAILABLE : BZP, EXB ,HSG,DUROSIL
ALSO AVAILABLE LIGHTER VERSION 5 MM THICKNESS**

1813 : MILD STEEL ADJUSTABLE FIELD GATE HINGE SET



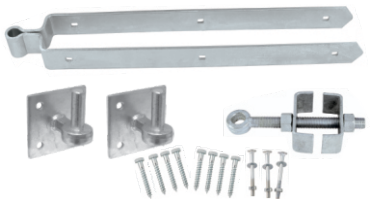
TECHNICAL DATA

DESCRIPTION	300MM	450MM	600MM
ITEM CODE	MGF1813300	MGF1813450	MGF1813600
TOP BAND (1812AL)	1	1	1
HOOK TO BOLT (1806)	1	1	1
HOOK TO DRIVE (1803)	1	1	1
ADJUSTABLE EYE WITH U CLIP (1809F)	1	1	1
CARRIAGE BOLT (M10X110)	2	3	3
TOTAL Wt. SET:	4.785	5.655	6.380



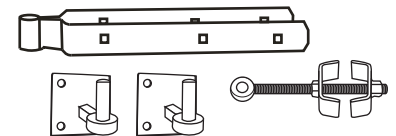
**FINISH AVAILABLE : BZP, EXB ,HSG,DUROSIL
ALSO AVAILABLE LIGHTER VERSION 5 MM THICKNESS**

1814 : MILD STEEL ADJUSTABLE HINGE SET WITH HOOK ON PLATE



TECHNICAL DATA

DESCRIPTION	300MM	450MM	600MM
ITEM CODE	MGF1814300	MGF1814450	MGF1814600
TOP BAND (1812AL)	1	1	1
EYE BOLT WITH U CLIP(1809F)	1	1	1
HOOK ON SQUARE PLATE 4X4 (1814A)	2	2	2
CARRIAGE BOLTS M10X110	2	3	3
COACH SCREW M10X75	8	8	8
TOTAL Wt. SET:	4.742	5.612	6.338

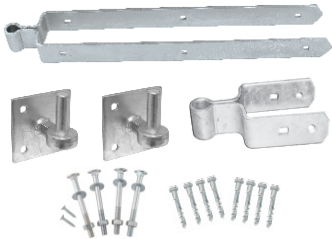


**FINISH AVAILABLE : BZP, EXB ,HSG,DUROSIL
ALSO AVAILABLE LIGHTER VERSION 5 MM THICKNESS**

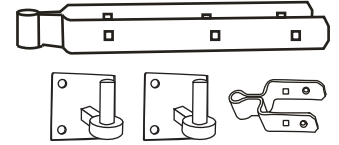


1817 : MILD STEEL STANDARD HINGE SET HOOKS ON PLATE

TECHNICAL DATA



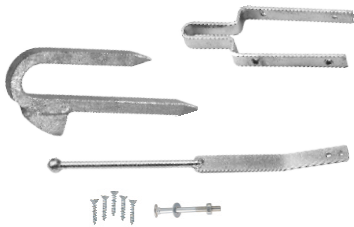
DESCRIPTION	300MM	450MM	600MM
ITEM CODE	MGF1817300	MGF1817450	MGF1817600
TOP BAND(1812AL)	1	1	1
BOTTOM BAND (1812AS)	1	1	1
HOOK ON PLATE 4X4(1814A)	2	2	2
CARRIAGE BOLTS WITH NUT	3	4	4
COACH SCREW M10X75	8	8	8
SCREW 12x1.25"	2	2	2
TOTAL Wt. SET:	4.472	5.341	6.060



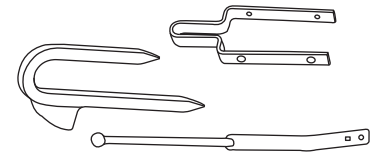
FINISH AVAILABLE : BZP, EXB ,HSG,DUROSIL
ALSO AVAILABLE LIGHTER VERSION 5 MM THICKNESS

1820 : MILD STEEL SPRING LATCH HINGE SET

TECHNICAL DATA



DESCRIPTION	SET
ITEM CODE	MGF1820600
SPRING LATCH	1
SPRING KEEP	1
SPRING CATCH	1
CARRIAGE BOLTS (M8x110)	1
SCREW 12x1.25"	5
TOTAL Wt. SET :	1.950



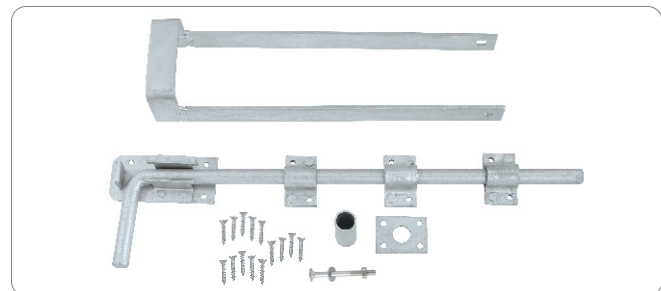
FINISH AVAILABLE : BZP, EXB ,HSG,DUROSIL

2802 : MILD STEEL DOUBLE GATE FASTENER SET

TECHNICAL DATA

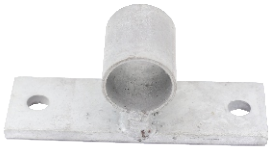
DESCRIPTION	SET
ITEM CODE	MGF2802450
THROWOVER14" (1810)	1
DOOR BOLT18"(XXX)	1
CARRIAGE BOLTS (M8x110)	1
SCREW 10x1.25"	14
TOTAL Wt. SET :	2.395

FINISH AVAILABLE : BZP, EXB ,HSG,DUROSIL





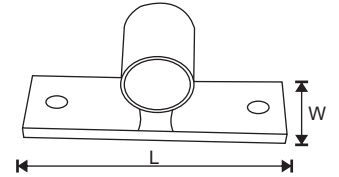
1311 : MILD STEEL GATE HANGER HORIZONTAL TOP



TECHNICAL DATA

ITEM CODE	LENGTH	WIDTH	THICKNESS	PIPE DIA	WT/ PCS	PCS. IN INNER	PCS. IN OUTER
MGFI1311150	150	50	8	42	0.642	4	20

FINISH AVAILABLE : BZP, EXB ,HSG,DUROSIL



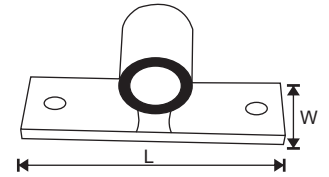
1312 : MILD STEEL GATE HANGER HORIZONTAL BOTTOM



TECHNICAL DATA

ITEM CODE	LENGTH	WIDTH	THICKNESS	PIPE DIA	WT/ PCS	PCS. IN INNER	PCS. IN OUTER
MGFI1312250	150	50	8	42	0.670	4	20

FINISH AVAILABLE : BZP, EXB ,HSG,DUROSIL



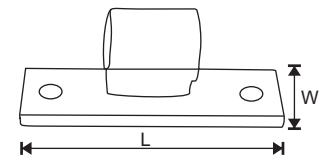
1314 : MILD STEEL GATE HANGER VERTICAL TOP



TECHNICAL DATA

ITEM CODE	LENGTH	WIDTH	THICKNESS	PIPE DIA	WT/ PCS	PCS. IN INNER	PCS. IN OUTER
MGFI1314150	150	50	8	42	0.631	4	20

FINISH AVAILABLE : BZP, EXB ,HSG,DUROSIL





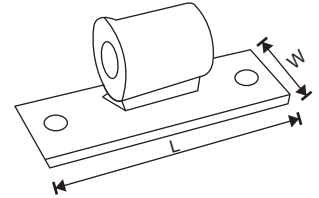
1315 : MILD STEEL GATE HANGER VERTICAL BOTTOM



TECHNICAL DATA

ITEM CODE	LENGTH	WIDTH	THICKNESS	PIPE DIA	WT/ PCS	PCS. IN INNER	PCS. IN OUTER
MGF1315150	150	50	8	42	0.720	4	20

FINISH AVAILABLE : BZP, EXB ,HSG,DUROSIL



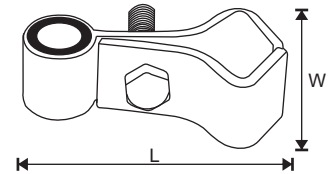
1321 : MILD STEEL GATE HANGER RSJ BOTTOM



TECHNICAL DATA

ITEM CODE	LENGTH	WIDTH	THICKNESS	PIPE DIA	WT/ PCS	PCS. IN INNER	PCS. IN OUTER
MGF1321128	128	75	7	42	0.946	4	20

FINISH AVAILABLE : BZP, EXB ,HSG,DUROSIL



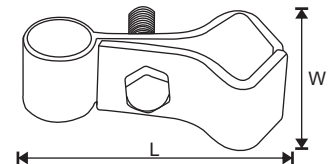
1322 : MILD STEEL GATE HANGER RSJ TOP



TECHNICAL DATA

ITEM CODE	LENGTH	WIDTH	THICKNESS	PIPE DIA	WT/ PCS	PCS. IN INNER	PCS. IN OUTER
MGF1322128	128	75	7	42	0.904	4	20

FINISH AVAILABLE : BZP, EXB ,HSG,DUROSIL





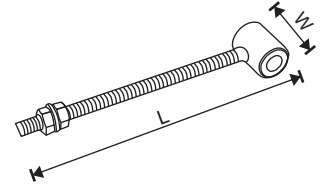
1331 : MILD STEEL GATE HANGER THREADED BAR BOTTOM



TECHNICAL DATA

ITEM CODE	LENGTH	ROD DIA	OUTER DIA	INNER DIA	WT/ PCS	PCS. IN INNER	PCS. IN OUTER
MGFI1331300	355	12X5/16"	42	36	0.896	4	20

FINISH AVAILABLE : BZP, EXB ,HSG,DUROSIL



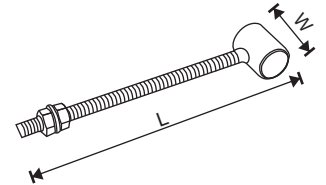
1333 : MILD STEEL GATE HANGER THREADED BAR TOP



TECHNICAL DATA

ITEM CODE	LENGTH	ROD DIA	OUTER DIA	INNER DIA	WT/ PCS	PCS. IN INNER	PCS. IN OUTER
MGFI1333250	310	10X5/8"	42	36	0.534	4	20

FINISH AVAILABLE : BZP, EXB ,HSG,DUROSIL



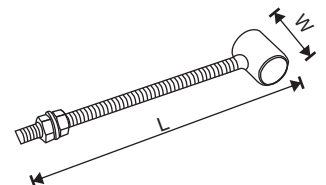
1341 : MILD STEEL GATE HANGER THREADED BAR TOP



TECHNICAL DATA

ITEM CODE	LENGTH	ROD DIA	OUTER DIA	INNER DIA	WT/ PCS	PCS. IN INNER	PCS. IN OUTER
MGFI1341300	355	12X5/16"	42	36	0.870	4	20

FINISH AVAILABLE : BZP, EXB ,HSG,DUROSIL





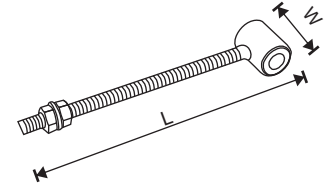
1343 : MILD STEEL GATE HANGER THREADED BAR BOTTOM



TECHNICAL DATA

ITEM CODE	LENGTH	ROD DIA	OUTER DIA	INNER DIA	WT/ PCS	PCS. IN INNER	PCS. IN OUTER
MGF1343250	310	10X5/8"	42	36	0.554	4	20

FINISH AVAILABLE : BZP, EXB ,HSG,DUROSIL



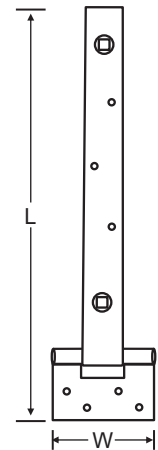
1060: MILD STEEL CELLAR HINGES



TECHNICAL DATA

ITEM CODE	SIZE	LENGTH	WIDTH	THICKNESS	SCREW NO.	BALT NO.	WT/ PCS	PCS IN INNER	PCS IN OUTER
MGF1060450	18"	460	125	4.0	10	12X65	1.170	2	4

FINISH AVAILABLE - SEY, BZP, EXB



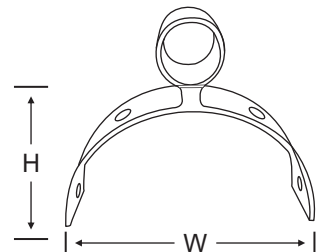
HALF ROUND GATE HANGER



TECHNICAL DATA

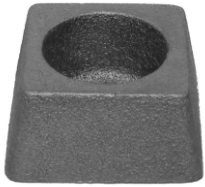
DPG CODE	ITEM CODE	NAME	HEIGHT	WIDTH	THICKNESS	PIPE IN. DIA	PIPE OUT. DIA	WT/ PCS	PCS IN INNER	PCS IN OUTER
1354	MGF1354XXX	BOTTOM	146	50	3.7	36	42	0.580	4	20
1353	MGF1353XXX	TOP	146	50	3.7	36	42	0.580	4	20

FINISH AVAILABLE - SEY, BZP, EXB, HSG





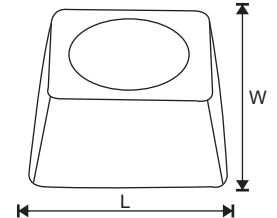
G2276 : CAST IRON GATE HANGER SPUD



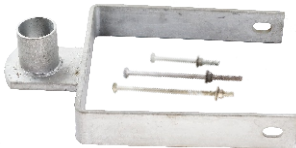
TECHNICAL DATA

ITEM CODE	LENGTH	WIDTH	HOLE DIA	WT/ PCS	PCS. IN INNER	PCS. IN OUTER
COEM2276040	62	62	42MM	0.533	4	20

FINISH AVAILABLE : BZP, EXB ,HSG,DUROSIL



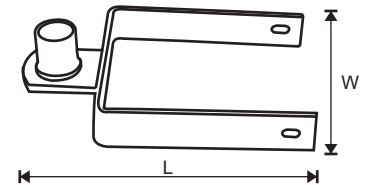
1351 : MILD STEEL GATE HANGER SQUARE POST BOTTOM



TECHNICAL DATA

ITEM CODE	SIZE	LENGTH	WIDTH	THICKNESS	WT/ PCS	PCS. IN INNER	PCS. IN OUTER
MGFI1351150	6"	214	197	6	1.818	4	16

FINISH AVAILABLE - BZP, EXB, HSG, DUROSIL



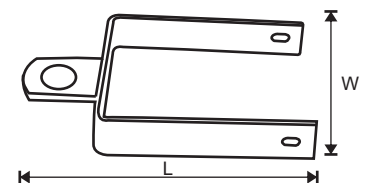
1352 : MILD STEEL GATE HANGER SQUARE POST TOP



TECHNICAL DATA

ITEM CODE	SIZE	LENGTH	WIDTH	THICKNESS	WT/ PCS	PCS. IN INNER	PCS. IN OUTER
MGFI1352150	6"	214	197	6	1.645	4	16

FINISH AVAILABLE - BZP, EXB, HSG, DUROSIL



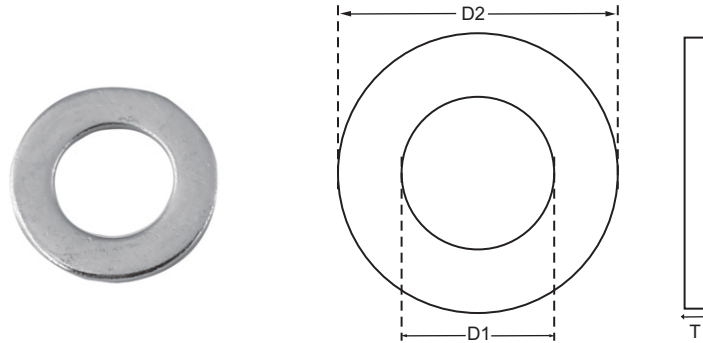


Fasteners



Note

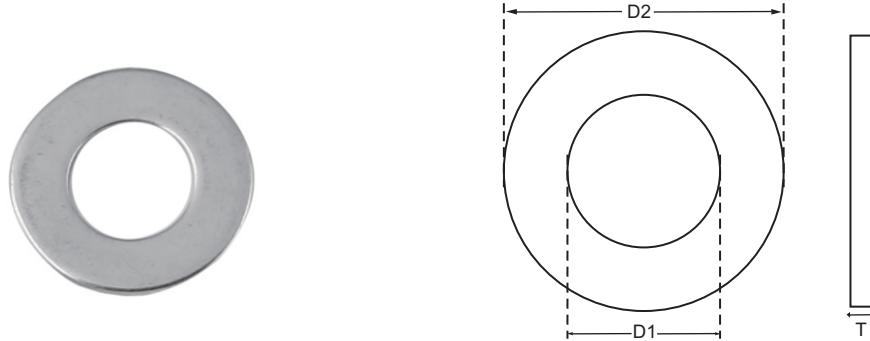
- 1. _____
- 2. _____
- 3. _____
- 4. _____
- 5. _____
- 6. _____
- 7. _____
- 8. _____
- 9. _____
- 10. _____
- 11. _____
- 12. _____
- 13. _____
- 14. _____
- 15. _____
- 16. _____
- 17. _____
- 18. _____
- 19. _____
- 20. _____

WASHERS : BS 4320 METRIC SERIES (FORM A & B)

BS 4320 DIMENSIONS OF WASHERS (FORMS A AND B)
TECHNICAL DATA

NOMINAL SIZE OF BOLT OR SCREW	INSIDE DIAMETER (D1)MM	OUTER DIAMETER (D2)MM	THICKNESS MM	
			FORM A (NORMAL RANGE)	FORM B (NORMAL RANGE)
	Min - Max	Min - Max	Min - Max	Min - Max
M3	3.2 - 3.4	6.7 - 7.0	0.4 - 0.6	-
M4	4.3 - 4.5	8.7 - 9.0	0.7 - 0.9	-
M5	5.3 - 5.5	9.7 - 10.0	0.9 - 1.1	-
M6	6.4 - 6.7	12.1 - 12.5	1.4 - 1.8	0.7 - 0.9
M8	8.4 - 8.7	16.6 - 17.0	1.4 - 1.8	0.9 - 1.1
M10	10.5 - 10.9	20.5 - 21.5	1.8 - 2.2	1.05 - 1.45
M12	13.0 - 13.4	23.5 - 24.0	2.3 - 2.7	1.4 - 1.8
M14	15.0 - 15.4	27.5 - 28.0	2.3 - 2.7	1.4 - 1.8
M16	17.0 - 17.4	29.5 - 30.0	2.7 - 3.3	1.8 - 2.2
M18	19.0 - 19.5	33.2 - 34.0	2.7 - 3.3	1.8 - 2.2
M20	21.0 - 21.5	36.0 - 37.0	2.7 - 3.3	1.8 - 2.2
M22	23.0 - 23.5	38.2 - 39.0	2.7 - 3.3	1.8 - 2.2
M24	25.0 - 25.5	43.2 - 44.0	3.7 - 4.3	2.3 - 2.7
M27	28.0 - 28.5	49.2 - 50.0	3.7 - 4.3	2.3 - 2.7
M30	31.0 - 31.6	55.0 - 56.0	3.7 - 4.3	2.3 - 2.7
M33	34.0 - 34.6	59.0 - 60.0	4.4 - 5.6	2.7 - 3.3
M36	37.0 - 37.6	65.0 - 66.0	4.4 - 5.6	2.7 - 3.3
M39	40.0 - 40.6	71.0 - 72.0	5.4 - 6.6	2.7 - 3.3

FINISH AVAILABLE : ZP, HSG

WASHERS : BS 4320 METRIC SERIES (FORM C AND D)



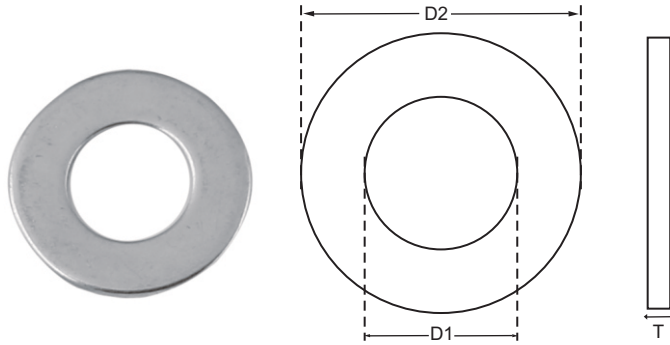
BS 4320 DIMENSIONS OF WASHERS (FORMS C AND D)

TECHNICAL DATA

NOMINAL SIZE OF BOLT OR SCREW	INSIDE DIAMETER MM	OUTER DIAMETER MM	THICKNESS MM	
			FORM C (NORMAL RANGE)	FORM D (NORMAL RANGE)
	Min - Max	Min - Max	Min - Max	Min - Max
M4	4.3 - 4.5	9.7 - 10.0	0.7 - 0.9	-
M5	5.3 - 5.5	12.1 - 12.5	0.9 - 1.1	-
M6	6.4 - 6.7	13.6 - 14.0	1.4 - 1.8	0.7 - 0.9
M8	8.4 - 8.7	20.5 - 21.0	1.4 - 1.8	0.9 - 1.1
M10	10.5 - 10.9	23.5 - 24.0	1.4 - 1.8	1.05 - 1.45
M12	13.0 - 13.4	27.5 - 28.0	2.3 - 2.7	1.4 - 1.8
M14	15.0 - 15.4	29.5 - 30.0	2.3 - 2.7	1.4 - 1.8
M16	17.0 - 17.4	33.2 - 34.0	2.7 - 3.3	1.8 - 2.2
M18	19.0 - 19.5	36.2 - 37.0	2.7 - 3.3	1.8 - 2.2
M20	21.0 - 21.5	38.2 - 39.0	2.7 - 3.3	1.8 - 2.2
M22	23.0 - 23.5	43.2 - 44.0	2.7 - 3.3	1.8 - 2.2
M24	25.0 - 25.5	49.2 - 50.0	3.7 - 4.3	2.3 - 2.7
M27	28.0 - 28.5	55.0 - 56.0	3.7 - 4.3	2.3 - 2.7
M30	31.0 - 31.6	59.0 - 60.0	3.7 - 4.3	2.3 - 2.7
M33	31.0 - 31.6	65.0 - 66.0	4.4 - 5.6	2.7 - 3.3
M36	37.0 - 37.6	71.0 - 72.0	4.4 - 5.6	2.7 - 3.3
M39	40.0 - 40.6	76.0 - 77.0	5.4 - 6.6	2.7 - 3.3

FINISH AVAILABLE : ZP, HSG

WASHERS : BS 4320 METRIC SERIES (FORM E)



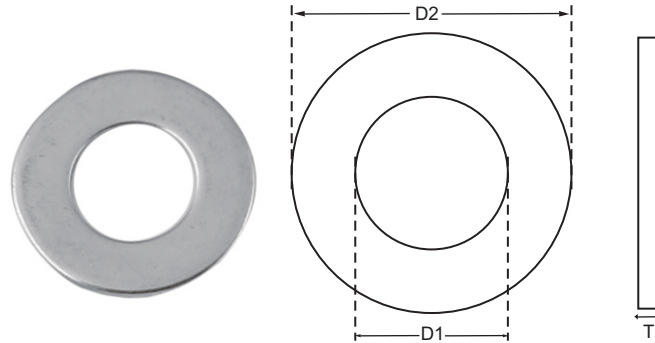
BS 4320 DIMENSIONS OF WASHERS (FORM E)

TECHNICAL DATA

NOMINAL SIZE OF BOLT OR SCREW	INSIDE DIAMETER (D1)MM	OUTER DIAMETER (D2)MM	THICKNESS (T) MM
	Min - Max	Min - Max	Min - Max
M5	5.5 - 5.8	9.2 - 10.0	0.8 - 1.2
M6	6.6 - 7.0	11.7 - 12.5	1.3 - 1.9
M8	9.0 - 9.4	16.2 - 17.0	1.3 - 1.9
M10	11.0 - 11.5	20.2 - 21.0	1.7 - 2.3
M12	14.0 - 14.5	23.2 - 24.0	2.2 - 2.8
M14	16.0 - 16.5	27.2 - 23.0	2.2 - 2.8
M16	18.0 - 18.5	29.2 - 30.0	2.4 - 3.6
M18	20.0 - 20.6	32.8 - 34.0	2.4 - 3.6
M20	22.0 - 22.6	35.8 - 37.0	2.4 - 3.6
M22	24.0 - 24.6	37.8 - 39.0	2.4 - 3.6
M24	26.0 - 26.6	42.8 - 44.0	3.4 - 4.6
M27	30.0 - 30.6	48.8 - 50.0	3.4 - 4.6
M30	33.0 - 33.8	54.5 - 56.0	3.4 - 4.6
M33	36.0 - 36.8	58.5 - 60.0	4.0 - 6.0
M36	39.0 - 39.8	64.5 - 66.0	4.0 - 6.0
M39	42.0 - 42.8	70.5 - 72.0	5.0 - 7.0
M42	45.0 - 45.8	76.5 - 78.0	5.8 - 8.2
M45	48.0 - 48.8	83.0 - 85.0	5.8 - 8.2
M48	52.0 - 53.0	90.0 - 92.0	6.8 - 9.2
M52	56.0 - 57.0	96.0 - 98.0	6.8 - 9.2
M56	62.0 - 63.0	103.0 - 105.0	7.8 - 10.2
M60	66.0 - 67.0	108.0 - 110.0	7.8 - 10.2
M64	70.0 - 71.0	113.0 - 115.0	7.8 - 10.2
M68	74.0 - 75.0	118.0 - 120.0	8.8 - 11.2

FINISH AVAILABLE : ZP, HSG

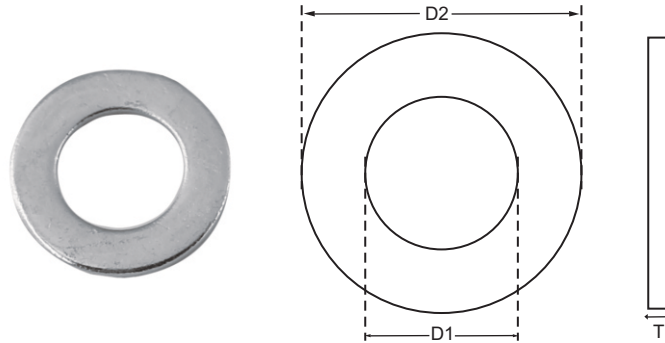
WASHERS : BS 4320 METRIC SERIES (FORM F)



BS 4320 DIMENSIONS OF WASHERS (FORM F)

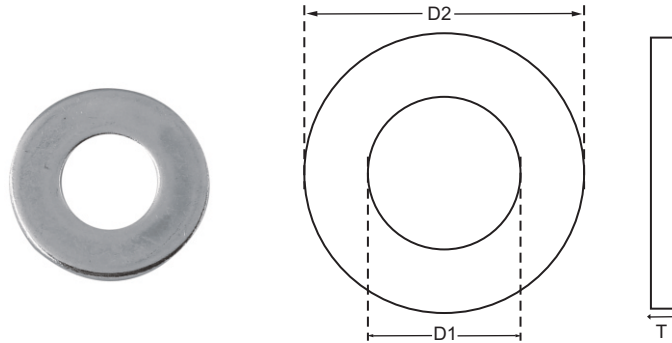
TECHNICAL DATA

NOMINAL SIZE OF BOLT OR SCREW	INSIDE DIAMETER MM	OUTER DIAMETER MM	THICKNESS MM
	Min - Max	Min - Max	Min - Max
M8	9.0 - 9.4	20.2 - 21.0	1.3 - 1.9
M10	11.0 - 11.5	23.2 - 24.0	1.7 - 2.3
M12	14.0 - 14.5	27.2 - 28.0	2.2 - 2.8
M14	16.0 - 16.5	29.2 - 30.0	2.2 - 2.8
M16	18.0 - 18.5	32.8 - 34.0	2.4 - 3.6
M18	20.0 - 20.6	35.8 - 37.0	2.4 - 3.6
M20	22.0 - 22.6	37.8 - 39.0	2.4 - 3.6
M22	24.0 - 24.6	42.8 - 44.0	2.4 - 3.6
M24	26.0 - 26.6	48.8 - 50.0	3.4 - 4.6
M27	30.0 - 30.6	54.5 - 56.0	3.4 - 4.6
M30	33.0 - 33.8	58.5 - 60.0	3.4 - 4.6
M33	36.0 - 36.8	64.5 - 66.0	4.0 - 6.0
M36	39.0 - 39.8	70.5 - 72.0	4.0 - 6.0
M39	42.0 - 42.8	75.5 - 77.0	5.0 - 7.0

DIN 125 : STANDARD FASTENERS

METRIC WASHERS - DIMENSIONS
TECHNICAL DATA

NOMINAL SIZE OF BOLT OR SCREW	INSIDE DIAMETER (D1)MM	OUTER DIAMETER (D2)MM	THICKNESS (T) MM
	Min - Max	Min - Max	Min - Max
M1.6	1.7 - 1.84	3.7 - 4	0.25 - 0.35
M2	2.2 - 2.34	4.7 - 5	0.25 - 0.35
M2.5	2.7 - 2.84	5.7 - 6	0.45 - 0.55
M3	3.2 - 3.38	6.64 - 7	0.45 - 0.55
M3.5	3.7 - 3.88	7.64 - 8	0.45 - 0.55
M4	4.3 - 4.48	8.64 - 9	0.7 - 0.9
M5	5.3 - 5.48	9.64 - 10	0.9 - 1.10
M6	6.4 - 6.62	11.57 - 12	1.4 - 1.8
M8	8.4 - 8.62	15.57 - 16	1.4 - 1.8
M10	10.5 - 10.77	19.48 - 20	1.8 - 2.2
M12	13 - 13.27	23.48 - 24	2.3 - 2.7
M14	15 - 15.27	27.48 - 28	2.3 - 2.7
M16	17 - 17.27	29.48 - 30	2.7 - 3.3
M18	19 - 19.33	33.38 - 34	2.7 - 3.3
M20	21 - 21.33	36.38 - 37	2.7 - 3.3
M22	23 - 23.33	38.38 - 39	2.7 - 3.3
M24	25 - 25.33	43.38 - 44	3.7 - 4.3
M27	28 - 28.33	49.38 - 50	3.7 - 4.3
M30	31 - 31.39	55.26 - 56	3.7 - 4.3
M33	34 - 34.62	58.8 - 60	4.4 - 5.6
M36	37 - 37.62	64.8 - 66	4.4 - 5.6
M39	40 - 40.62	70.08 - 72	5.4 - 6.6
M42	43 - 43.62	76.8 - 78	6 - 8
M48	50 - 50.62	90.6 - 92	7 - 9

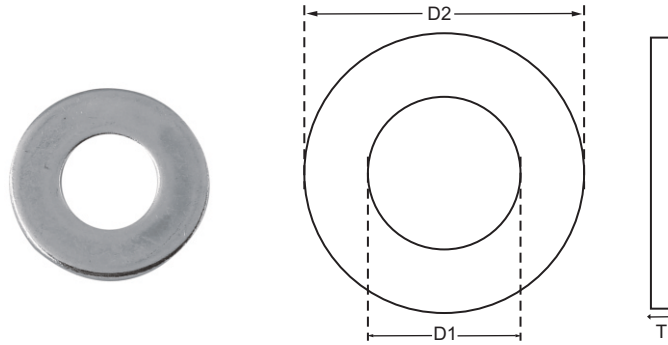
BS3410 : LARGE BRIGHT WASHER (TABLE 4 LIGHT PATTERN)



DIMENSIONS (INCHES)

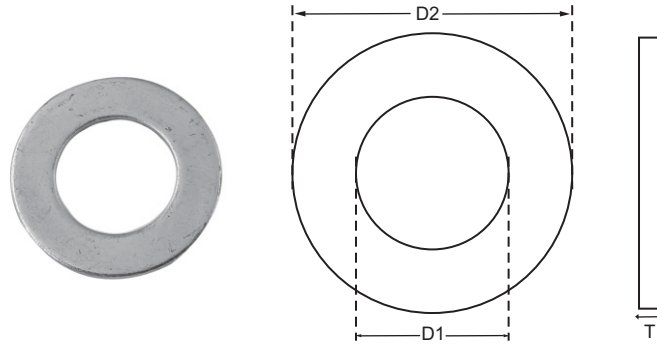
TECHNICAL DATA

NOMINAL SIZE OF BOLT OR SCREW	INSIDE DIAMETER (D1)MM	OUTER DIAMETER (D2)MM	THICKNESS (T) MM
	Min - Max	Min - Max	Min - Max
1/4	0.265 - 0.270	0.620 - 0.625	0.038 - 0.044
5/16	0.328 - 0.333	0.745 - 0.750	0.044 - 0.052
3/8	0.390 - 0.395	0.870 - 0.875	0.044 - 0.052
7/16	0.453 - 0.458	0.995 - 1.000	0.052 - 0.060
1/2	0.515 - 0.520	1.115 - 1.125	0.052 - 0.060
9/16	0.588 - 0.593	1.240 - 1.250	0.052 - 0.060
5/8	0.651 - 0.656	1.365 - 1.375	0.068 - 0.076
3/4	0.776 - 0.781	1.615 - 1.625	0.068 - 0.076
7/8	0.901 - 0.906	1.865 - 1.875	0.068 - 0.076
1	1.026 - 1.031	2.115 - 2.125	0.086 - 0.098
1 1/8	1.151 - 1.156	2.355 - 2.375	0.098 - 0.110
1 1/4	1.276 - 1.281	2.605 - 2.625	0.110 - 0.122
1 3/8	1.401 - 1.406	2.855 - 2.875	0.122 - 0.136
1 1/2	1.526 - 1.531	3.095 - 3.125	0.122 - 0.136
1 3/4	1.776 - 1.781	3.595 - 3.625	0.122 - 0.136
2	2.026 - 2.031	4.095 - 4.125	0.122 - 0.136

BS3410 : LARGE BRIGHT WASHER (TABLE 4 HEAVY PATTERN)

DIMENSIONS (INCHES)
TECHNICAL DATA

NOMINAL SIZE OF BOLT OR SCREW	INSIDE DIAMETER (D1)MM	OUTER DIAMETER (D2)MM	THICKNESS (T) MM
	Min - Max	Min - Max	Min - Max
1/4	0.265 - 0.270	0.620 - 0.625	0.052 - 0.060
5/16	0.328 - 0.333	0.745 - 0.750	0.068 - 0.076
3/8	0.390 - 0.395	0.870 - 0.875	0.068 - 0.076
7/16	0.453 - 0.458	0.995 - 1.000	0.086 - 0.098
1/2	0.515 - 0.520	1.115 - 1.125	0.086 - 0.098
9/16	0.588 - 0.593	1.240 - 1.250	0.098 - 0.110
5/8	0.651 - 0.656	1.365 - 1.375	0.110 - 0.122
3/4	0.776 - 0.781	1.615 - 1.625	0.122 - 0.136
7/8	0.901 - 0.906	1.865 - 1.875	0.136 - 0.152
1	1.026 - 1.031	2.115 - 2.125	0.152 - 0.168
1 1/8	1.151 - 1.156	2.355 - 2.375	0.168 - 0.184
1 1/4	1.276 - 1.281	2.605 - 2.625	0.168 - 0.184
1 3/8	1.401 - 1.406	2.855 - 2.875	0.184 - 0.202
1 1/2	1.526 - 1.531	3.095 - 3.125	0.184 - 0.202
1 3/4	1.776 - 1.781	3.595 - 3.625	0.202 - 0.222
2	2.026 - 2.031	4.095 - 4.125	0.202 - 0.222

BS3410 : SMALL BRIGHT WASHER (TABLE 3 LIGHT PATTERN)

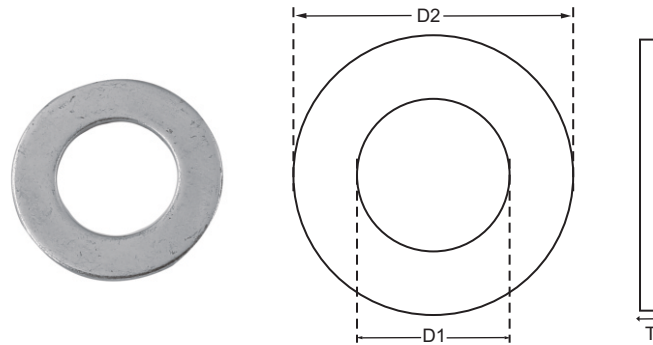


DIMENSIONS (INCHES)

TECHNICAL DATA

NOMINAL SIZE OF BOLT OR SCREW	INSIDE DIAMETER (D1)MM	OUTER DIAMETER (D2)MM	THICKNESS (T) MM
	Min - Max	Min - Max	Min - Max
1/4	0.265 - 0.270	0.557 - 0.562	0.034 - 0.038
5/16	0.328 - 0.333	0.620 - 0.625	0.038 - 0.044
3/8	0.390 - 0.395	0.745 - 0.750	0.044 - 0.052
7/16	0.453 - 0.458	0.870 - 0.875	0.044 - 0.052
1/2	0.515 - 0.520	0.995 - 1.000	0.052 - 0.060
9/16	0.588 - 0.593	1.115 - 1.125	0.052 - 0.060
5/8	0.651 - 0.656	1.240 - 1.250	0.068 - 0.076
3/4	0.776 - 0.781	1.490 - 1.500	0.068 - 0.076
7/8	0.901 - 0.906	1.615 - 1.625	0.068 - 0.076
1	1.026 - 1.031	1.865 - 1.875	0.068 - 0.076
1 1/8	1.151 - 1.156	2.115 - 2.125	0.086 - 0.098
1 1/4	1.276 - 1.281	2.355 - 2.375	0.110 - 0.122
1 3/8	1.401 - 1.406	2.605 - 2.625	-
1 1/2	1.526 - 1.531	2.855 - 2.875	-
1 3/4	1.776 - 1.781	3.345 - 3.375	-
2	2.026 - 2.031	3.595 - 3.625	-

BS3410 : SMALL BRIGHT WASHERS (TABLE 3 HEAVY PATTERN)

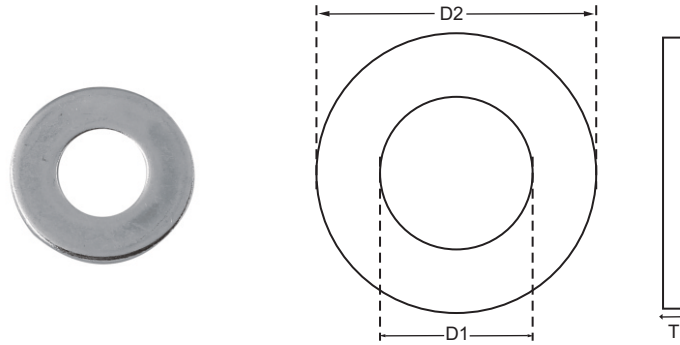


DIMENSIONS (INCHES)

TECHNICAL DATA

NOMINAL SIZE OF BOLT OR SCREW	INSIDE DIAMETER (D1) MM	OUTER DIAMETER (D2) MM	THICKNESS (T) MM
	Min - Max	Min - Max	Min - Max
1/4	0.265 - 0.270	0.557 - 0.562	0.052 - 0.060
5/16	0.328 - 0.333	0.620 - 0.625	0.068 - 0.076
3/8	0.390 - 0.395	0.745 - 0.750	0.068 - 0.076
7/16	0.453 - 0.458	0.870 - 0.875	0.086 - 0.098
1/2	0.515 - 0.520	0.995 - 1.000	0.086 - 0.098
9/16	0.588 - 0.593	1.115 - 1.125	0.098 - 0.110
5/8	0.651 - 0.656	1.240 - 1.250	0.110 - 0.122
3/4	0.776 - 0.781	1.490 - 1.500	0.122 - 0.136
7/8	0.901 - 0.906	1.615 - 1.625	0.136 - 0.152
1	1.026 - 1.031	1.865 - 1.875	0.152 - 0.168
1 1/8	1.151 - 1.156	2.115 - 2.125	0.168 - 0.184
1 1/4	1.276 - 1.281	2.355 - 2.375	0.168 - 0.184
1 3/8	1.401 - 1.406	2.605 - 2.625	0.184 - 0.202
1 1/2	1.526 - 1.531	2.855 - 2.875	0.184 - 0.202
1 3/4	1.776 - 1.781	3.345 - 3.375	0.202 - 0.222
2	2.026 - 2.031	3.595 - 3.625	0.202 - 0.222

BS4320G : FLAT WASHER FORM G

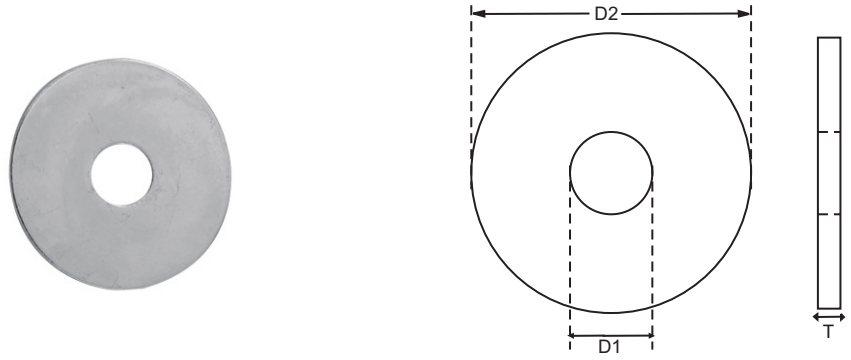


DIMENSIONS (IN MM)

TECHNICAL DATA

NOMINAL SIZE OF BOLT OR SCREW	INSIDE DIAMETER (D1) MM	OUTER DIAMETER (D2) MM	THICKNESS (T) MM
M5	5.5	15	1.6
M6	6.6	18	2.0
M7	7.6	21	2.0
M8	9.0	24	2.0
M10	11	30	2.5
M12	14	36	3.0
M14	16	42	3.0
M16	18	48	4.0
M18	20	54	4.0
M20	22	60	5.0
M22	24	66	5.0
M24	26	72	6.0
M27	30	81	6.0
M30	33	90	8.0
M33	36	99	8.0
M36	39	108	10.0
M39	42	117	10.0

MUDGAURD WASHERS



DIMENSIONS FOR MUDGUARD

TECHNICAL DATA

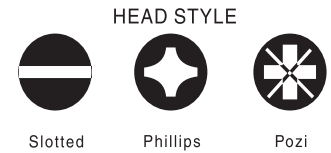
WASHER DESCRIPTION (INCHES)	INSIDE DIAMETER (D1)MM	OUTER DIAMETER (D2)MM	THICKNESS (T) MM
	Min - Max	Min - Max	Min - Max
4.3 X 20 X 1.5	4.3 - 4.48	19.48 - 20	1.3 - 1.7
5.3 X 20 X 1.5	5.3 - 5.48	19.48 - 20	1.3 - 1.7
5.3 X 25 X 1.5	5.3 - 5.48	24.48 - 25	1.3 - 1.7
5.3 X 30 X 1.5	5.3 - 5.48	29.48 - 30	1.3 - 1.7
6.4 X 20 X 1.5	6.4 - 6.62	19.48 - 20	1.3 - 1.7
6.4 X 25 X 1.5	6.4 - 6.62	24.48 - 25	1.3 - 1.7
6.4 X 30 X 1.5	6.4 - 6.62	29.48 - 30	1.3 - 1.7
6.4 X 40 X 1.5	6.4 - 6.62	39.48 - 40	1.3 - 1.7
8.4 X 20 X 1.5	8.4 - 8.62	19.48 - 20	1.3 - 1.7
8.4 X 25 X 1.5	8.4 - 8.62	24.48 - 25	1.3 - 1.7
8.4 X 30 X 1.5	8.4 - 8.62	29.48 - 30	1.3 - 1.7
8.4 X 40 X 1.5	8.4 - 8.62	39.48 - 40	1.3 - 1.7
10.5 X 20 X 1.5	10.5 - 10.77	19.48 - 20	1.3 - 1.7
10.5 X 25 X 1.5	10.5 - 10.77	24.48 - 25	1.3 - 1.7
10.5 X 30 X 1.5	10.5 - 10.77	29.38 - 30	1.3 - 1.7
10.5 X 40 X 1.5	10.5 - 10.77	39.38 - 40	1.3 - 1.7
10.5 X 50 X 1.5	10.5 - 10.77	49.38 - 50	1.3 - 1.7
11 X 40 X 1.5	11 - 11.27	39.38 - 40	1.3 - 1.7
11 X 50 X 1.5	11 - 11.27	49.38 - 50	1.3 - 1.7
12 X 30 X 1.5	13 - 13.27	29.48 - 30	1.3 - 1.7
12 X 35 X 1.5	13 - 13.27	34.48 - 35	1.3 - 1.7
12 X 40 X 1.5	13 - 13.27	39.38 - 40	1.3 - 1.7
12 X 50 X 1.5	13 - 13.27	49.38 - 50	1.3 - 1.7
12 X 60 X 1.5	13 - 13.27	58.8 - 60	1.3 - 1.7
15 X 40 X 1.5	15 - 15.27	39.38 - 40	1.3 - 1.7

STEEL WOOD SCREW



TECHNICAL DATA

SCREW NO.	DIA. OF HEAD	DIA. OF UNTHREADED SHANK	DEPTH OF HEAD
3	4.60	2.30	1.32
4	5.30	2.65	1.50
6	6.70	3.35	1.58
7	7.40	3.70	2.16
8	8.10	4.10	2.34
10	9.50	4.75	2.69
12	10.90	5.40	3.05



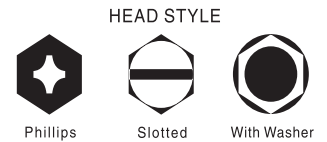
FINISH AVAILABLE : ZP, SC, NP, ZPYP, BLACK, OLIVE GREEN
 PACKING : FLEXIBLE (As Per Customer Requirements)

HEXAGON BOLTS & CARRIAGE BOLTS



TECHNICAL DATA

SCREW NO.	DIA. OF HEAD	DEPTH OF HEAD
M3	5.50	2.50
M4	7.00	2.80
M5	8.00	3.50
M6	10.00	4.00
M8	13.00	5.50
M10	17.50	7.00



FINISH AVAILABLE : ZP, SC, NP, ZPYP, BLACK, OLIVE GREEN
 PACKING : FLEXIBLE (As Per Customer Requirements)
 Also Being Manufactured In Brass

STEEL MACHINE SCREW



TECHNICAL DATA

SCREW NO.	DIA. OF HEAD	DEPTH OF HEAD
M2	3.80	1.20
M3	5.60	1.65
M4	7.50	2.20
M5	9.20	2.50
M6	11.00	3.00
M8	14.50	4.00
M10	18.00	5.00



FINISH AVAILABLE : ZP, SC, NP, ZPYP, BLACK, OLIVE GREEN
 PACKING : FLEXIBLE (As Per Customer Requirements)
 Also Being Manufactured In Brass

STAINLESS STEEL TRUNCATED MACHINE SCREWS



M6X16MM
 MATERIAL : SS304, SS316
 FINISH AVAILABLE : POL,
 PACKING : FLEXIBLE (As Per Customer Requirements)

HEAD STYLE



Pozi

STEEL SELF TAPPING SCREW



TECHNICAL DATA

SCREW NO.	DIA. OF HEAD	THREADED SIZE	DEPTH OF HEAD
2	4.30	2.20	1.30
4	5.50	2.90	1.70
6	6.80	3.50	2.10
8	9.10	4.20	2.50
10	9.50	4.80	3.00
12	10.00	5.50	3.40
14	12.40	6.30	3.80

FINISH AVAILABLE : ZP, SC, NP, ZPYP, BLACK, OLIVE GREEN
 PACKING : FLEXIBLE (As Per Customer Requirements)

HEAD STYLE



Slotted



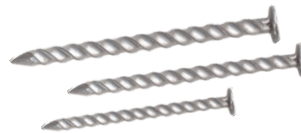
Phillips



Pozi

WRENTAILS

- Ring Shank Nails
- Clout Nails
- Threaded Nails
- Round Wire Nails
- Drywall Screws
- Chipboard Screws
- Twin Thread Screws



THREADED NAILS
 Sizes: 1" to 3"



RING SHANK NAILS
 Sizes: 1" to 3"
ROUND WIRE NAILS
 Sizes: 1/2" to 5"



CLOUT NAILS
 Sizes: 1/2" to 2"

FINISH AVAILABLE : ZP, SC, NP, ZPYP, BLACK, OLIVE GREEN
 PACKING : FLEXIBLE (As Per Customer Requirements)

SCREWS & THREADED RODS



TWIN THREAD

M 12



CHIPBOARD

M 8

GT1 to GT6 (M6 to M16)

FINISH AVAILABLE : ZP, SC, NP, ZPYP, BLACK, OLIVE GREEN
 PACKING : FLEXIBLE (As Per Customer Requirements)



DRY WALL

M 16

Mortice Locks & Latches

Mortice Locks & Latches

CODE	PAGE NO.	CODE	PAGE NO.	CODE	PAGE NO.	CODE	PAGE NO.
GB2801	L-065	LAC0023	L-067	LAL0134	L-059	LAL1406	L-039
GB2802	L-065	LAC0025	L-067	LAL0137	L-059	LAL1410	L-034
GB2803	L-065	LAC0026	L-067	LAL0138	L-059	LAL1411	L-034
GB2804	L-065	LAC0031	L-068	LAL0139	L-059	LAL1422	L-030
GBLK120	L-053	LAC1015	L-071	LAL0251	L-061	LAL1423	L-030
LAA0001	L-037	LAC1016	L-071	LAL0252	L-061	LAL1427	L-035
LAA0010	L-063	LAC1019	L-071	LAL0261	L-061	LAL1428	L-035
LAA0129	L-054	LAC1020	L-071	LAL0262	L-061	LAL1434	L-029
LAA0907	L-054	LAC1023	L-071	LAL0275	L-062	LAL1435	L-029
LAA1000	L-053	LAC1024	L-071	LAL0276	L-062	LAL1449	L-029
LAA1006	L-053	LAL0001	L-056	LAL0277	L-062	LAL1450	L-029
LAA1031	L-053	LAL0002	L-056	LAL0278	L-062	LAL1451	L-029
LAA1101	L-054	LAL0008	L-063	LAL0904	L-062	LAL1456	L-035
LAA1105	L-053	LAL0009	L-063	LAL0905	L-062	LAL1457	L-035
LAA1220	L-037	LAL0011	L-056	LAL0906	L-062	LAL1460	L-036
LAA1231	L-038	LAL0012	L-056	LAL0907	L-062	LAL1461	L-036
LAA1232	L-038	LAL0031	L-058	LAL0998	L-058	LAL1500	L-043
LAA1233	L-044	LAL0032	L-058	LAL0999	L-058	LAL1501	L-043
LAA1234	L-044	LAL0041	L-057	LAL1000	L-052	LAL1512	L-042
LAA1235	L-016	LAL0042	L-057	LAL1001	L-050	LAL1513	L-042
LAA1236	L-038	LAL0054	L-057	LAL1004	L-052	LAL1520	L-043
LAA1237	L-038	LAL0055	L-057	LAL1005	L-052	LAL1521	L-043
LAA1238	L-044	LAL0056	L-064	LAL1006	L-052	LAL1535	L-036
LAA1239	L-044	LAL0057	L-064	LAL1011	L-050	LAL1536	L-036
LAA1240	L-016	LAL0058	L-064	LAL1012	L-051	LAL1544	L-042
LAA1241	L-038	LAL0069	L-063	LAL1021	L-049	LAL1545	L-042
LAA1242	L-038	LAL0071	L-055	LAL1023	L-051	LAL1601	L-064
LAA1243	L-044	LAL0072	L-055	LAL1031	L-049	LAL1602	L-064
LAA1244	L-044	LAL0073	L-055	LAL1200	L-030	LAL1603	L-064
LAA1245	L-016	LAL0074	L-055	LAL1201	L-030	LAL1625	L-006
LAA1424	L-054	LAL0080	L-068	LAL1210	L-031	LAL1627	L-006
LAA1434	L-054	LAL0081	L-055	LAL1211	L-031	LAL1630	L-004
LAA1450	L-054	LAL0082	L-055	LAL1220	L-031	LAL1631	L-004
LAA1500	L-053	LAL0083	L-055	LAL1221	L-031	LAL1644	L-005
LAA5009	L-054	LAL0084	L-055	LAL1300	L-032	LAL1645	L-005
LAA5034	L-054	LAL0101	L-060	LAL1301	L-032	LAL1648	L-005
LAA5501	L-053	LAL0102	L-060	LAL1310	L-032	LAL1649	L-005
LAA5507	L-053	LAL0103	L-060	LAL1311	L-032	LAL1661	L-004
LAC0001	L-065	LAL0104	L-060	LAL1398	L-034	LAL1662	L-004
LAC0002	L-065	LAL0111	L-060	LAL1399	L-033	LAL1675	L-006
LAC0010	L-066	LAL0112	L-060	LAL1400	L-034	LAL1676	L-006
LAC0011	L-066	LAL0113	L-060	LAL1401	L-034	LAL1679	L-004
LAC0015	L-066	LAL0131	L-059	LAL1402	L-034	LAL1683	L-005
LAC0016	L-066	LAL0132	L-059	LAL1404	L-033	LAL1685	L-006
LAC0021	L-066	LAL0133	L-059	LAL1405	L-033	LAL1687	L-007

Mortice Locks & Latches

Mortice Locks & Latches

CODE	PAGE NO.	CODE	PAGE NO.	CODE	PAGE NO.	CODE	PAGE NO.
LAL1691	L-008	LAL1877	L-019	LAL5002	L-047	LAL5624	L-015
LAL1693	L-009	LAL1878	L-019	LAL5009	L-045	LAL5625	L-016
LAL1695	L-009	LAL1879	L-019	LAL5010	L-045	LAL5626	L-016
LAL1697	L-009	LAL1883	L-025	LAL5026	L-047	LAL5627	L-016
LAL1699	L-007	LAL1884	L-025	LAL5027	L-047	LAL5637	L-010
LAL1700	L-007	LAL1885	L-025	LAL5033	L-045	LAL5638	L-010
LAL1703	L-007	LAL1899	L-021	LAL5034	L-045	LAL5639	L-011
LAL1704	L-007	LAL1900	L-021	LAL5059	L-046	LAL5640	L-011
LAL1715	L-008	LAL1904	L-022	LAL5060	L-046	LAL5645	L-014
LAL1716	L-008	LAL1905	L-022	LAL5083	L-046	LAL5646	L-014
LAL1719	L-008	LAL1909	L-023	LAL5084	L-046	LAL5647	L-015
LAL1720	L-008	LAL1910	L-023	LAL5240	L-039	LAL5648	L-015
LAL1723	L-009	LAL1911	L-023	LAL5265	L-072	LAL9001	L-069
LAL1724	L-009	LAL1921	L-020	LAL5266	L-072	LAL9002	L-069
LAL1727	L-048	LAL1922	L-020	LAL5267	L-072	LAL9003	L-069
LAL1728	L-048	LAL1923	L-020	LAL5268	L-072	LAL9004	L-070
LAL1729	L-048	LAL1927	L-020	LAL5270	L-027	LAL9005	L-070
LAL1730	L-048	LAL1928	L-020	LAL5275	L-027	LAL9006	L-070
LAL1735	L-017	LAL1929	L-020	LAL5280	L-028	LAL9007	L-071
LAL1736	L-017	LAL3008	L-012	LAL5315	L-028	LAL9008	L-071
LAL1737	L-017	LAL3009	L-012	LAL5316	L-028	LLMPL0001	L-001
LAL1738	L-017	LAL3010	L-012	LAL5317	L-028	Sliding Door Gear	
LAL1739	L-017	LAL3011	L-012	LAL5325	L-072	SDG0001	S-001
LAL1740	L-017	LAL3020	L-013	LAL5501	L-040	SWG0001	S-001
LAL1817	L-018	LAL3021	L-013	LAL5502	L-040	Panic Exit Hardware	
LAL1818	L-018	LAL3022	L-013	LAL5503	L-041	PB3P004	E-002
LAL1821	L-024	LAL3023	L-013	LAL5504	L-041	PBDD001	E-001
LAL1822	L-024	LAL3032	L-013	LAL5505	L-041	PBDD002	E-001
LAL1825	L-018	LAL3033	L-013	LAL5506	L-041	PBDD003	E-002
LAL1826	L-018	LAL3034	L-013	LAL5507	L-040	PBDD004	E-002
LAL1827	L-018	LAL3035	L-013	LAL5508	L-040	PBET001	E-001
LAL1831	L-024	LAL4005	L-002	LAL5601	L-010	PBET003	E-002
LAL1832	L-024	LAL4011	L-003	LAL5602	L-010	PBPB002	E-001
LAL1833	L-024	LAL4017	L-003	LAL5603	L-010	PBPL002	E-001
LAL1841	L-021	LAL4029	L-002	LAL5604	L-011	PBPL003	E-002
LAL1842	L-021	LAL4035	L-003	LAL5605	L-011	PBPL004	E-002
LAL1846	L-022	LAL4041	L-003	LAL5606	L-011	PBSD001	E-001
LAL1847	L-022	LAL4053	L-002	LAL5607	L-012	PBSD002	E-001
LAL1851	L-023	LAL4059	L-003	LAL5608	L-012	PBSD003	E-002
LAL1852	L-023	LAL4065	L-003	LAL5609	L-012	PBSD004	E-002
LAL1853	L-023	LAL4083	L-026	LAL5619	L-014		
LAL1869	L-019	LAL4125	L-002	LAL5620	L-014		
LAL1870	L-019	LAL4131	L-002	LAL5621	L-014		
LAL1873	L-025	LAL4137	L-002	LAL5622	L-015		
LAL1874	L-025	LAL5001	L-047	LAL5623	L-015		

Lever Handles
Lever Handles
Lever Handles
Lever Handles

CODE	PAGE NO.	CODE	PAGE NO.	CODE	PAGE NO.	CODE	PAGE NO.
G0230	D-048	G0571	D-048	Gb0301	D-033	GZC0511	D-001
G0235	D-048	G0572	D-048	GB0305	D-033	GZC0512	D-001
G0240	D-045	G1203	D-052	GB0306	D-034	GZC0513	D-001
G0250	D-045	G1204	D-052	GB0308	D-034	GZC0514	D-001
G0260	D-045	G1205	D-053	GB0310	D-034	GZC0515	D-001
G0270	D-045	G1207	D-053	GB0311	D-034	GZC0831	D-011
G0280	D-046	G1236	D-048	GB0381	D-035	GZC1502	D-002
G0300	D-049	G2200	D-053	GB0382	D-035	GZC1505	D-002
G0301	D-049	G300A	D-046	GB0411	D-036	GZC1508	D-002
G0302	D-049	G550C	D-049	GB0412	D-036	GZC1510	D-002
G0303	D-049	G550K	D-049	GB0413	D-036	GZC1511	D-002
G0304	D-049	GA1001	D-038	GB0414	D-036	GZC5502	D-003
G0307	D-051	GA1002	D-038	GB0421	D-035	GZC5503	D-003
G0310	D-046	GA1003	D-038	GB0422	D-035	GZC5504	D-003
G0311	D-050	GA1004	D-038	GB0451	D-036	GZC5505	D-003
G0311A	D-050	GA1021	D-038	GB0452	D-036	GZC5510	D-003
G0312	D-051	GA1022	D-038	GB0453	D-036	LHC0001	D-015
G0317	D-051	GA1023	D-038	GB0454	D-036	LHC0002	D-015
G0317	D-051	GA1024	D-038	GB1100	D-037	LHC0003	D-016
G0330	D-052	GA1025	D-038	GB1101	D-037	LHC0004	D-016
G0351	D-052	GA1041	D-039	GB1102	D-036	LHC0005	D-017
G0405A	D-053	GA1042	D-039	GB1103	D-036	LHC0006	D-017
G0460	D-043	GA1043	D-039	GB1104	D-037	LHC0007	D-018
G0470	D-043	GA1044	D-039	GB1105	D-037	LHC0008	D-018
G0480	D-043	GA1045	D-039	GFB0501	D-033	LHC0009	D-019
G0495	D-050	GA1061	D-039	GFB0502	D-032	LHC0010	D-019
G0500	D-044	GA1062	D-039	GFB0503	D-032	LHC0011	D-020
G0500A	D-047	GA1063	D-039	GFB0504	D-033	LHC0012	D-020
G0501	D-043	GA1064	D-039	GFB0505	D-032	LHC0013	D-021
G0502	D-045	GA1065	D-039	GFB0506	D-032	LHC0014	D-021
G0503	D-043	GA1081	D-040	GFB0507	D-032	LHC0015	D-022
G0504	D-045	GA1082	D-040	GFB0508	D-032	LHC0016	D-022
G0506	D-043	GA1083	D-040	GFB0509	D-032	LHC0020	D-023
G0507	D-045	GA1084	D-040	GFB0510	D-032	LHC0021	D-023
G0508	D-046	GA1085	D-040	GFB0511	D-032	LHC0022	D-024
G0510	D-044	GA1086	D-040	GFB0512	D-032	LHC0023	D-024
G0510A	D-047	GA1087	D-041	GFB0513	D-033	LHC0024	D-025
G0516	D-044	GA1088	D-041	GFB0514	D-033	LHC0025	D-025
G0518	D-044	GA1089	D-041	GFB0515	D-033	LHC0026	D-026
G0520	D-044	GA1090	C-042	GFB0531	D-033	LHC0028	D-026
G0520A	D-047	GA1411	D-041	GZC0501	D-001	LHC0029	D-027
G0540	D-047	GA1412	D-041	GZC0502	D-001	LHC0030	D-027
G0541	D-047	GA1431	C-042	GZC0504	D-001	LHC0102	D-028
G0542	D-047	GA1461	C-042	GZC0505	D-001	LHC0103	D-028
G0570	D-048	Ga1462	C-042	GZC0510	D-001	LHC0104	D-029

Lever Handles

Lever Handles

Pull Handles

Pull Handles

CODE	PAGE NO.	CODE	PAGE NO.	CODE	PAGE NO.	CODE	PAGE NO.	
LHC0201	D-029	LHE31CY	D-031	FHC0001	P-002	GB4032	P-006	
LHC0202	D-030	LHE31CY	D-031	FHC0002	P-002	GB4033	P-006	
LHC0203	D-030	LHE31OV	D-031	FHC0003	P-002	GFESB18	P-003	
LHC31BL	D-031	LHE31OV	D-031	FHC0004	P-002	GFESB180	P-003	
LHC31BL	D-031	LHE31ST	D-031	FHC0005	P-002	GFESB18C	P-003	
LHC31CY	D-031	LHE31ST	D-031	FHC0006	P-002	OP03	P-002	
LHC31CY	D-031	LHZ0018	D-005	FHC0007	P-002	PHC19103	P-001	
LHC31OV	D-031	LHZ0019	D-005	FHC0008	P-002	PHC22103	P-001	
LHC31OV	D-031	LHZ0020	D-006	FHC0009	P-002	PHE19103	P-001	
LHC31ST	D-031	LHZ0021	D-006	G0180	P-010	PHE22003	P-002	
LHC31ST	D-031	LHZ0023	D-007	G0184	P-008	PHE22103	P-001	
LHE0001	D-015	LHZ0024	D-007	G0186	P-010	PHS19103	P-001	
LHE0002	D-015	LHZ0032	D-008	G0188	P-009	PHS22103	P-001	
LHE0003	D-016	LHZ0033	D-008	G0189	P-009	Casement Stays		
LHE0004	D-016	LHZ0034	D-009	G0190	P-008			
LHE0005	D-017	LHZ0035	D-009	G1100	P-008		478A	C-003
LHE0006	D-017	LHZ0036	D-010	G1100A	P-008		478B	C-004
LHE0007	D-018	LHZ0037	D-010	G1100B	P-008		478C	C-004
LHE0008	D-018	LHZ0044	D-013	G1100L	P-009		G0360	C-005
LHE0009	D-019	LHZ0045	D-013	G1100S	P-008		G0362	C-005
LHE0010	D-019	LHZ0046	D-014	G1101	P-010		G0408	C-004
LHE0011	D-020	LHZ0051	D-003	G1102	P-010		G0410	C-004
LHE0012	D-020	LHZ0052	D-003	G1103	P-010		G1500	C-005
LHE0013	D-021	LHZ0053	D-003	GA1311	P-006		G1501	C-005
LHE0014	D-021	LHZ0054	D-003	GA1312	P-006		G1502	C-005
LHE0015	D-022	LHZ0055	D-003	GA1313	P-006		G1550	C-005
LHE0016	D-022	LHZ0331	D-012	GA1314	P-006		G1551	C-005
LHE0020	D-023	LHZ03B0	D-002	GA1315	P-007		GA1550	C-003
LHE0021	D-023	LHZ03B1	D-002	GA1316	P-007		GA1551	C-003
LHE0022	D-024	LHZ03B3	D-002	GA1317	P-007		GA1555	C-003
LHE0023	D-024	LHZ1014	D-004	GA1321	P-007	GB1002	C-002	
LHE0024	D-025	LHZ1015	D-004	GA1322	P-007	GB1004	C-002	
LHE0025	D-025	LHZ1025	D-012	GA1341	P-007	GB1006	C-002	
LHE0026	D-026	LHZ1100	D-011	GA1351	P-007	GB1026	C-003	
LHE0028	D-026	LHZ31CY	D-014	Ga1352	P-007	GB1068	C-002	
LHE0029	D-027	LHZ31KY	D-014	GB0331	P-005	GZC2020	C-002	
LHE0030	D-027	LHZ31OV	D-014	GB0351	P-006	GZC2021	C-001	
LHE0102	D-028	LHZA004	D-014	GB1029	P-004	GZC2022	C-001	
LHE0103	D-028	Pull Handles		GB1031	P-004	GZC2025	C-001	
LHE0104	D-029				GB1051	P-005	SPARES	C-005
LHE0201	D-029		246	P-011	GB1052	P-005		
LHE0202	D-030		258	P-011	GB1053	P-005		
LHE0203	D-030		1509	P-004	GB1061	P-005		
LHE31BL	D-031		GB4031	P-006	GB1062	P-005		
LHE31BL	D-031		258H	P-011	GB1075	P-004		

Window Fasteners

Hinges

Hinges

Hinges

CODE	PAGE NO.	CODE	PAGE NO.	CODE	PAGE NO.	CODE	PAGE NO.
G0380	W-008	451	H-010	1951EH	H-014	G0201	H-044
G0415	W-008	453	H-007	1951FF	H-014	G0201EH	H-044
GA1561	W-008	457	H-012	2020SS	H-003	G0201H	H-044
GB1072	W-007	459	H-015	3210SS	H-009	G0202	H-044
GB1074	W-007	460	H-015	400BP	H-016	G0202H	H-044
GB3001	W-004	466	H-012	451 DPBW	H-011	G0203H	H-045
GB3005	W-004	488	H-013	451 DSW	H-011	G0205	H-044
GB3010	W-005	499	H-040	451BBTP	H-005	G0206	H-033
GB3015	W-002	804	H-006	451BBTP	H-002	G0208	H-045
GB3020	W-003	804	H-006	451BBTP	H-003	G1297	H-033
GB3025	W-003	867	H-036	451BBTP	H-005	G1298	H-033
GB3030	W-003	868	H-036	451SS	H-004	G1299	H-033
GB3032	W-004	899	H-011	451SS	H-007	G1301	H-033
GB3035	W-005	910	H-037	451SSBBTP	H-003	G1302	H-033
GB3035A	W-005	950	H-037	451SST*	H-004	GB0101	H-031
GB3050	W-006	1055	H-038	451T*	H-006	GB1200	H-023
GB3055	W-006	1056	H-039	452DS/FP	H-016	GB1201	H-023
GB3055A	W-006	1057	H-040	453SS	H-003	GB1203	H-023
GB3171	W-007	1061	H-042	453SST*	H-003	GB1208	H-023
GB3550	W-007	1386	H-019	458RC	H-012	GB1210	H-023
GPV011	W-008	1387	H-020	458SSRC	H-009	GB1211	H-023
GZC2001	W-001	1838	H-009	459SS	H-008	GB1300	H-024
GZC2005	W-001	1840	H-010	466SS	H-008	GB1301	H-024
GZC2031	W-001	1841	H-020	499C	H-043	GB1302	H-024
GZC2071	W-002	1842	H-020	499LW	H-041	GB1303	H-024
GZC3035	W-002	1951	H-013	551BB(SSP/DSP)	H-004	GB1304	H-024
		2020	H-006	551SSBB	H-002	GB1305	H-024
		3207	H-014	551W	H-007	GB1306	H-024
		3210	H-013	804H	H-015	GB1311	H-024
30	H-037	5050	H-006	G0005	H-045	GB1350	H-025
36	H-021	5050	H-010	G0007	H-045	GB1351	H-026
38	H-043	7182	H-041	G0009	H-045	GB1352	H-026
101	H-022	104FP	H-018	G0011	H-045	GB1353	H-026
105	H-017	1055H	H-042	G0013	H-045	GB1354	H-026
106	H-018	1055L	H-039	G0015	H-045	GB1355	H-026
108	H-019	1056C/D	H-041	G0017	H-044	GB1380	H-025
109	H-019	1056L	H-040	G0019	H-044	GB1385	H-025
115	H-017	105EFH	H-018	G0020	H-047	GB1386	H-025
118	H-017	105SSBB	H-008	G0040	H-047	GB1387	H-025
119	H-036	112G	H-042	G0042	H-047	GB1401	H-025
120	H-035	119P	H-034	G0044	H-047	GB1402	H-025
128	H-038	120P	H-035	G0045	H-046	GB1403	H-027
130	H-039	121A	H-034	G0046	H-046	GB1404	H-027
234	H-038	121H	H-035	G0047	H-046	GB1405	H-027
400	H-016	121M	H-034	G0050	H-046	GB1406	H-025
451	H-006						

Hinges

Hinges

Ironmongery

Ironmongery

Ironmongery

CODE	PAGE NO.	CODE	PAGE NO.	CODE	PAGE NO.	CODE	PAGE NO.
GB1500	H-026	149	I-029	1136A	I-023	891NSS	I-002
GB1501	H-026	213	I-016	1136BR	I-022	891SS	I-001
GB1502	H-026	218	I-036	1136EH	I-022	891SS	I-001
GB1601	H-029	236	I-033	1258H	I-005	892NSS	I-002
GB1602	H-029	315	I-037	1260H	I-015	892SS	I-001
GB1701	H-029	318	I-037	1260HLK	I-016	893NSS	I-002
GB1801	H-028	324	I-037	1260L	I-015	893SS	I-001
GB1811	H-032	325	I-038	1261SS	I-025	894NSS	I-002
GB1901	H-028	326	I-040	149LW	I-030	894SS	I-001
GB1902	H-028	327	I-040	149M	I-027	895NSS	I-002
GB1903	H-028	329	I-040	149W	I-031	895SS	I-001
GB2098	H-028	331	I-041	151LH/151RH	I-030	922A	I-004
GB2099	H-028	401	I-042	1819AH	I-019	922N	I-004
GB2100	H-028	497	I-035	1819B	I-019	923A	I-002
GB2101	H-028	498	I-035	1A	I-010	923H	I-003
GB2201	H-029	500	I-054	20P	I-021	923N	I-003
GB2302	H-030	585	I-041	236AB/AS	I-033	923SA	I-003
GB2400	H-030	597	I-016	236FB	I-032	923SS	I-001
GB2401	H-030	617	I-028	2A	I-010	D404	I-077
GB2451	H-032	780	I-042	2ASA	I-012	D406	I-077
GB3152	H-030	790	I-045	316/317	I-038	D408	I-077
GB3210	H-031	1010	I-031	316A/317A	I-039	D410	I-077
GB3210A	H-031	1011	I-031	319H	I-036	D608	I-077
GF0101	H-022	1012	I-032	319L	I-035	D610	I-077
GF0102	H-022	1131	I-024	319RC	I-036	D612	I-077
GF0111	H-022	1136	I-022	325H	I-038	D701	I-043
GF0112	H-022	1141	I-023	482-83-84-85	I-014	D702	I-043
GF0113	H-022	1247	I-042	4A	I-011	D703	I-043
GF0114	H-022	1257	I-012	4ASA	I-011	D704	I-043
GF0115	H-022	1258	I-004	50/4	I-020	D705	I-043
GF0117	H-022	1259	I-015	585S	I-041	D706	I-043
GF0151	H-022	1261	I-025	5A	I-011	D707	I-043
GF0155	H-022	1262	I-025	60BHB	I-013	D708	I-043
GF0201	H-022	1581	I-049	60MTB	I-013	G0051	I-049
GF0251	H-043	1706	I-050	617EL	I-029	G0060	I-058
GZC1201	H-001	1819	I-018	6A	I-012	G0065	I-058
GZC1215	H-001	1822	I-019	791NSS	I-002	G0120	I-062
MG1302	H-032	1835	I-017	7A	I-017	G0140	I-063
		1836	I-017	887SS	I-001	G0236	I-034
		70050	I-043	888NSS	I-002	G0350	I-021
		70070	I-039	888SS	I-001	G0366	I-008
20	I-020	70080	I-039	889NSS	I-002	G0368	I-008
66	I-014	70090	I-042	889SS	I-001	G0374	I-008
68	I-014	71705	I-050	890NSS	I-002	G0376	I-009
146	I-028	74103	I-073	890SS	I-001	G0377	I-009
147	I-028						

Ironmongery
Ironmongery
Ironmongery
Ironmongery

CODE	PAGE NO.	CODE	PAGE NO.	CODE	PAGE NO.	CODE	PAGE NO.
G0378	I-009	G2100A	I-027	GA1672	I-018	GB0908	I-007
G0400	I-068	G2101	I-027	GA1851	I-067	GB0909	I-007
G0402	I-058	G2101A	I-027	GB0236	I-033	GB0910	I-007
G0402A	I-068	G2102	I-027	GB0236H	I-033	GB0911	I-007
G0404A	I-058	G2102A	I-027	GB0236S	I-034	GB0912	I-007
G0405	I-058	G2103	I-027	GB0455A	I-071	GB0914	I-006
G0420	I-026	G2103A	I-027	GB0459	I-071	GB0915	I-006
G0421	I-026	G2104	I-027	GB0604	I-056	GB0931	I-070
G0492	I-069	G2104A	I-027	GB0607	I-056	GB0932	I-070
G0494	I-069	G2255	I-024	GB0608	I-055	GB0951	I-071
G0497	I-072	GA1101	I-064	GB0609	I-055	GB2501	I-061
G0701	I-069	GA1121	I-064	GB0611	I-055	GB2502	I-061
G0702	I-069	Ga1131	I-064	GB0612	I-055	GB2601	I-026
G0705	I-069	GA1141	I-064	GB0613	I-055	GB2602	I-026
G0706	I-068	GA1142	I-064	GB0615	I-055	GB2603	I-026
G0710	I-069	GA1143	I-064	GB0617	I-030	GB2604	I-026
G0801	I-021	GA1144	I-064	GB0801	I-065	GB2612	I-026
G0900	I-009	GA1201	I-056	GB0805	I-066	GB2613	I-026
G0900N	I-010	GA1201T	I-057	GB0806	I-065	GB2614	I-026
G0901	I-009	GA1202	I-056	GB0811	I-065	GB2615	I-026
G0901A	I-009	GA1211	I-057	GB0812	I-066	GB2702	I-050
G0901AN	I-010	GA1221	I-057	GB0821	I-070	GB2703	I-051
G0901N	I-010	GA1222	I-057	GB0850	I-059	GB2705	I-051
G0902	I-009	GA1421	I-059	GB0851	I-066	GB2707	I-051
G0902N	I-010	GA1423	I-060	GB0860	I-059	GB2900	I-064
G1401	I-063	GA1425	I-060	GB0881	I-060	GB3100	I-018
G1402	I-062	GA1451	I-072	GB0887	I-005	GB3101	I-018
G1403	I-062	GA1475	I-034	GB0888	I-005	GDC001	I-054
G1404	I-063	GA1481	I-067	GB0889	I-005	GDC011	I-054
G1601	I-072	GA1482	I-067	GB0889N	I-006	GFX5001	I-074
G1700	I-060	GA1483	I-073	GB0890	I-005	GFX5012	I-074
G1701	I-061	GA1483A	I-073	GB0891	I-005	GLH001	I-029
G1801	I-043	GA1484	I-052	GB0892	I-005	GP039	I-045
G1802	I-043	GA1485	I-052	GB0893	I-005	GP042	I-045
G1803	I-043	GA1486	I-052	GB0894	I-005	GP202	I-047
G1820	I-044	GA1488	I-052	GB0895	I-005	GP202/Q	I-047
G1850	I-044	GA1601	I-007	GB0896	I-005	GP202A	I-046
G1851	I-044	GA1602	I-007	GB0897	I-006	GP202C	I-048
G1901	I-053	GA1603	I-007	GB0898	I-006	GP202D	I-049
G2002	I-044	GA1604	I-007	GB0899	I-006	GP260	I-046
G2003	I-044	GA1605	I-007	GB0901	I-007	GP260A	I-046
G2004	I-044	GA1651	I-008	GB0902	I-007	GP261	I-047
G2005	I-044	GA1652	I-008	GB0903	I-007	GP268	I-048
G2099	I-027	GA1653	I-008	GB0904	I-007	GP268A	I-048
G2099A	I-027	GA1671	I-018	GB0906	I-007	GPL0051	I-075

Ironmongery
Wardrobe Tubes & Brackets
Field Gate & Fencing Hardware

CODE	PAGE NO.	CODE	PAGE NO.	CODE	PAGE NO.	CODE	PAGE NO.
GPL0061	I-076	1101	T-001	1812	G-028	1812 AL	G-024
GPL0201	I-075	1105	T-001	1813	G-028	1812AAS	G-024
GPL0301	I-075	1111	T-002	1814	G-028	1812AS	G-024
GPL0321	I-076	1116	T-002	1816	G-015	1814A	G-020
GPL0331	I-053	1121	T-002	1817	G-029	1814AH	G-021
GPL0351	I-053			1820	G-018	1816 LHS	G-016
GPL0401	I-074			1820	G-029	1820 E	G-019
GPV001	I-076	Field Gate & Fencing Hardware		1830	G-017	1820A	G-025
GPV021	I-058			1845	G-001	1820B	G-025
GWD0050	I-077	406	G-017	1850	G-002	1820C	G-025
GZC3001	I-070	412	G-012	1856	G-001	1820D	G-026
SPARES	I-020	435	G-021	1860	G-026	1830A	G-018
SPARES	I-023	452	G-006	1870	G-016	1865E	G-022
SPARES	I-021	453	G-006	1875	G-020	1865H	G-021
SPARES	I-024	454	G-007	1880	G-005	1866E	G-022
SSB001	I-032	473	G-008	1882	G-004	1866H	G-022
		474	G-008	1884	G-005	1890A	G-027
		475	G-008	1886	G-005	1890B	G-026
		850	G-006	1896	G-019	1890C	G-027
		851	G-007	1897	G-010	851A	G-011
6300	Z-001	1000	G-014	1910	G-002	G0122	G-017
6301	Z-001	1060	G-033	1950	G-002	G2276	G-034
70010	Z-002	1164	G-008	2404	G-007		
ADSM009	Z-002	1311	G-030	2430	G-027		
ADSZ0001	Z-001	1312	G-030	2802	G-029		
G0802	Z-002	1314	G-030	4025	G-009	BS 4320	F-001
GB6300	Z-002	1315	G-031	4568	G-011	BS 4320	F-002
		1321	G-031	5002	G-004	BS 4320	F-003
		1322	G-031	5002	G-004	BS 4320	F-004
		1331	G-032	6002	G-001	BS3410	F-006
G0210A-G0219A	N-003	1333	G-032	6252	G-018	BS3410	F-007
G0210-G0219	N-003	1341	G-032	8344	G-009	BS3410	F-008
G0600-G0609	N-003	1343	G-033	8344	G-010	BS3410	F-009
G0650-G0653	N-003	1351	G-034	8346	G-010	BS4320G	F-010
GA1700	N-002	1352	G-034	9002	G-016	DIN 125	F-005
GA1701	N-002	1353	G-033	9032	G-012		
GA1702	N-002	1354	G-033	9102	G-011		
GA1710	N-002	1418	G-003	9604	G-008		
GA1711	N-002	1502	G-003	19912	G-003		
GB0680-GB0689	N-004	1800	G-014	75002	G-009		
GB0700-GB0709	N-004	1803	G-020	1800CS	G-013		
GB0700-GB0709	N-004	1805	G-014	1800DLS	G-013		
GB0751-GB0776	N-004	1806	G-019	1800GC	G-012		
GB1700	N-002	1809	G-023	1800SS	G-013		
GB1701	N-002	1810	G-015	1809F	G-023		
GB1702	N-002						

Fasteners



KEY FINISHES

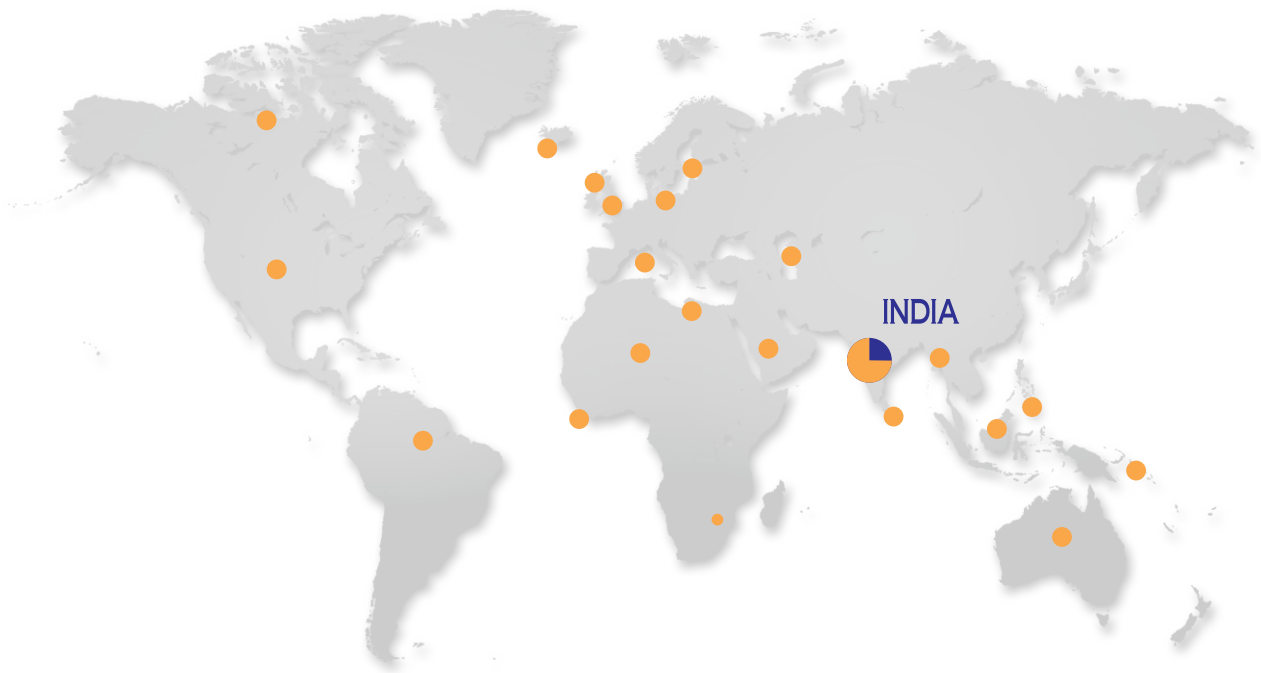
ABR	ANTIQUE BRASS	MGM	MATT GUN METAL
ABZ	ANTIQUE BRONZE	ONP	NICKLE PLATED
OAC	ANTIQUE COPPER	ORB	ORB
BAA	BLACK ALUMINIUM ANODISED	PAA	POLISH ALUMINIUM ANODIZED
BNP	BLACK NICKLE PLATED	PBL	POLISHED BLACK
BZP	BRIGHT ZINC PLATED	PCP	POLISHED CHROME PLATED
COP	COPPER	PEB	POLISHED ELECTRO BRASS
OCP	CHROME PLATED	PLQ	POLISHED / LACQUERED
ODS	DISTRESSED SILVER	PNP	POLISHED NICKLE PLATED
DSL	DUROSIL SILVER	POL	MIRROR / POLISH
DXB	DUROSIL EPOXY BLACK	PSS	POLISHED STAINLESS STEEL
OEB	ELECTRO BRASS	SAA	SATIN ALUMINIUM ANODIZED
EBR	EPOXY BROWN	SEB	SATIN ELECTRO BRASS
EXB	EPOXY BLACK	SAT	SATIN
BLU	EPOXY BLUE	SBR	SATIN BRASS
EXG	EPOXY GREY	OSC	SELF COLOR
GRN	EPOXY GREEN	SCO	SATIN COPPER
RED	EPOXY RED	SCP	SATIN CHROME PLATED
EXS	EPOXY SILVER	SLV	SILVER
EXW	EPOXY WHITE	SPW	SILVER PEWTER
OFB	FLORANTINE BRONZE	SNP	SATIN NICKLE PLATED
GAL	GALVORITE	SPK	SPARKLY
GBK	GALVORITE BLACK	SPR	SPARKLEY SILVER
GSL	GALVORITE SILVER	SSS	SATIN STAINLESS STEEL
HSG	HOT SPLETER GALVANIZED	TPC	TEXTURED POWDER COATED
JAP	BLACK JAPANED	OUB	URBAN BRONZE/ CITY BRONZE
MAB	MATT ANTIQUE BRASS	UTM	ULTIMO
OMW	MATT WHITE	UTG	ULTIMO GREY
OMB	MATT BLACK	VBK	VALVET BLACK
MBN	GUN METAL	ZYP	ZINC PLATED YELLOW PASIVATED
MEB	MIRROR ELECTRO BRASS	OTT	TWO TONE/DUAL TONE (SNP/CP, SCP/CP,EB/CP)



Note

1. _____
2. _____
3. _____
4. _____
5. _____
6. _____
7. _____
8. _____
9. _____
10. _____
11. _____
12. _____
13. _____
14. _____
15. _____
16. _____
17. _____
18. _____
19. _____
20. _____

Exporting to more than 22 Countries over the World



NOTE

* All weights given are approximate and can vary

* All data & photos printed in this catalogue represent the product to close details.
However, there may be some variations in real product from the photograph.

* All the information and photographs are the property of D. P. GARG & Co. PVT. LTD.
It is illegal to reproduce any photograph & data without prior written consent of the company.

D. P. GARG & CO. PVT. LTD.

An ISO : 9001 : 2015 , 14000 : 2015, OH&S : 45001 : 2018 Certified Company

(A Government of India Recognised Star Export House)

B-210 B, Phase - 2, Noida - 201305 (U.P.) INDIA

Ph.: +91-120-2460079, 2460085-87

Fax : +91-120-2460083

Email : smg@garglocks.co.in

Visit as at : www.garglocks.co.in ; www.garg-hinges.com